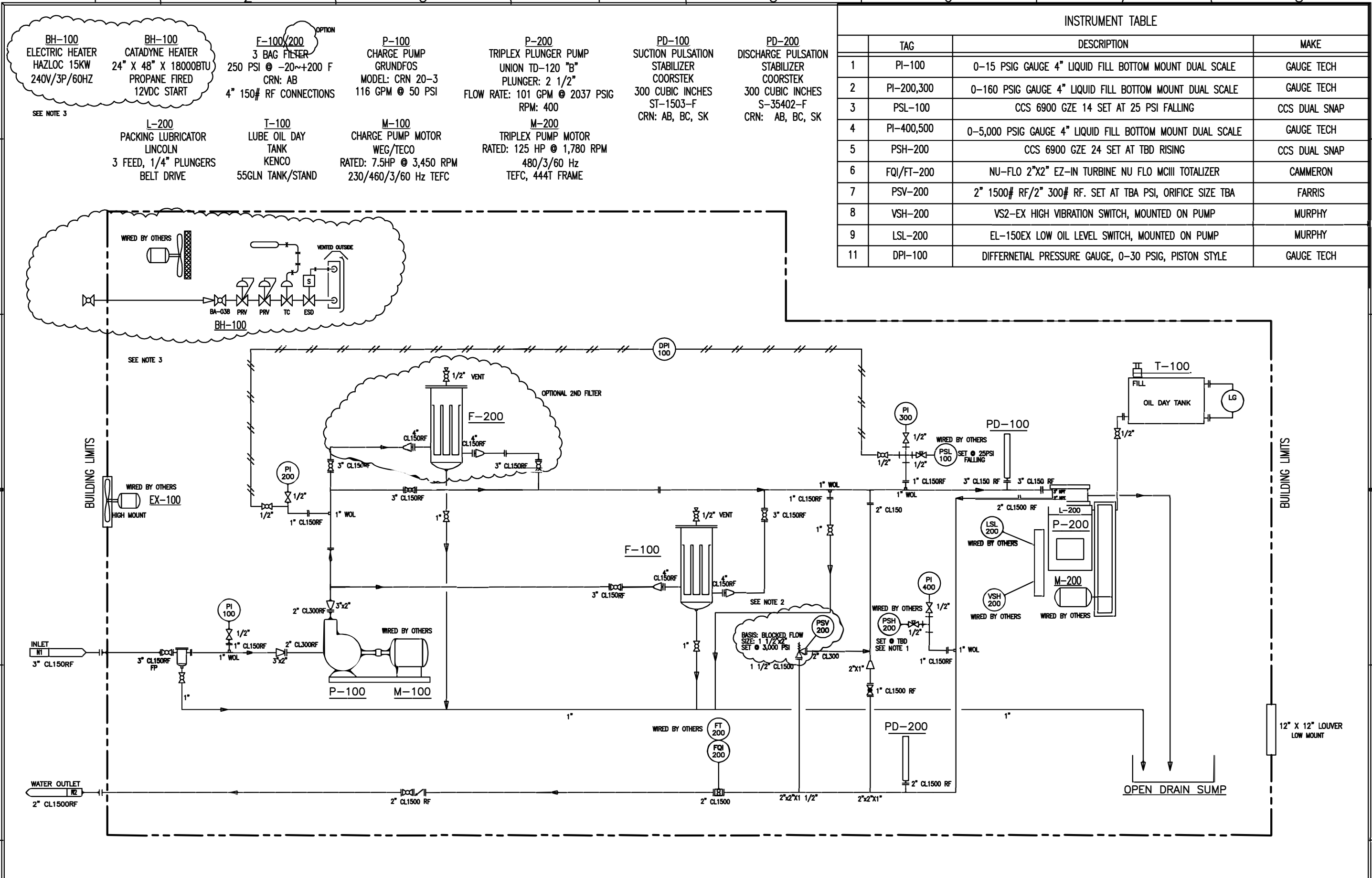


1	20/10/18	ADDED BASIC DIMENSIONS	MRB	MRB	
0	18/10/18	ISSUED FOR CONSTRUCTION	MRB	MRB	
REV	DATE	DETAILS	BY	CHK	APP

TITLE: TD-120, 125 HP ELECTRIC WATER DISPOSAL PACKAGE GENERAL LAYOUT	
DRAWING NO. -087-PID-001	REV. 1



INSTRUMENT TABLE			
	TAG	DESCRIPTION	MAKE
1	PI-100	0-15 PSIG GAUGE 4" LIQUID FILL BOTTOM MOUNT DUAL SCALE	GAUGE TECH
2	PI-200,300	0-160 PSIG GAUGE 4" LIQUID FILL BOTTOM MOUNT DUAL SCALE	GAUGE TECH
3	PSL-100	CCS 6900 GZE 14 SET AT 25 PSI FALLING	CCS DUAL SNAP
4	PI-400,500	0-5,000 PSIG GAUGE 4" LIQUID FILL BOTTOM MOUNT DUAL SCALE	GAUGE TECH
5	PSH-200	CCS 6900 GZE 24 SET AT TBD RISING	CCS DUAL SNAP
6	FQI/FT-200	NU-FLO 2"x2" EZ-IN TURBINE NU FLO MCIII TOTALIZER	CAMMERON
7	PSV-200	2" 1500# RF/2" 300# RF. SET AT TBA PSI, ORIFICE SIZE TBA	FARRIS
8	VSH-200	VS2-EX HIGH VIBRATION SWITCH, MOUNTED ON PUMP	MURPHY
9	LSL-200	EL-150EX LOW OIL LEVEL SWITCH, MOUNTED ON PUMP	MURPHY
11	DPI-100	DIFFERENTIAL PRESSURE GAUGE, 0-30 PSIG, PISTON STYLE	GAUGE TECH

NOTES:

1. SET PRESSURE WILL BE BASED ON APPLICATION
2. PSV SIZE TO BE CONFIRMED ONCE APPLICATION IS KNOWN
3. BH-100 CAN BE CHOICE OF 15 KW HAZLOC HEATER OR A 12VDC START 18,000BTU CATADYNE HEATER

REV	DATE	DETAILS	BY	CHK	APP
1	21/12/2018	AS BUILT	MRB	MRB	
0	16/09/2018	ISSUED FOR CONSTRUCTION	MRB	MRB	

TITLE:  
 12 GE  
 PROCESS AND INSTRUMENTATION DIAGRAM

DRAWING NO. 087-PID-001      REV. 1