

CJV#1904

**38GPM / 36" x 52' x
1600PSI Amine Plant**



This unit was removed from .62ppm sour service in 2016 and was moved to Red Deer. It is rare for the market based on it's 36" contactor size and 900# pressure rating. Obviously, it will need to be reconditioned prior to redeployment and this is an excellent candidate for it. Why? For one, it's located in a competitive and plentiful market for all reconditioning services (Red Deer) and secondly, it's because this package is so clean for its age. There is no "smell" that comes with old sour equipment, the UT's all check out, and it was flushed and steamed thoroughly before being moved off site.

We have assembled a complete refurbishment plan which is available upon request. Initial estimates target 40% of NEW cost AFTER acquisition and reconditioning is complete. You will save over \$1 million dollars. Take "as is" or have us complete the project for you!

CJV#1904

38GPM / 36" x 52' x 1600PSI Amine Plant



| | |
|--------------------------------|--|
| Manufactured | ALCO 1996 |
| Location | Red Deer, AB |
| Status | Disconnected |
| Amine Contactor | 36"ID x 52' S/S x 1610PSIG @ -20/150oF / 20 Stainless Steel Valve Trays |
| Amine Flash Tank | 36" ID x 8' S/S x 150PSI |
| Amine Charge Pumps | Two (2) Union TD-60 Triplex Pumps w/ 50HP / XP Electric Motors / Configured for 34USGPM @ 1600psig |
| Amine Booster Pumps | Two (2) Union VCM 1.5 x 2 x 9 / 42GPM @ 26PSI / 100% Backup |
| Lean Amine Cooler | 0.775 MMBTU/Hr @ 150psig |
| Sweet Gas Cooler | 1.1MMBTU/Hr c/w 30HP Electric Motor @ 1610PSI |
| Amine Reflux Condenser | 2.1MMBTU/Hr @ 50PSI |
| Amine Reboiler | 84" ID x 30' S/S / 20" OD Firetubes c/w 25' High Stacks / 2 x 2.0MMBTU/Hr Flame Arrested Burners |
| Amine / Amine Exchanger | Alva Lava Plate/Frame Stainless @ 1.15MMBTU/Hr |
| H2S Analyzer | 24V Class 1 Div 2 |



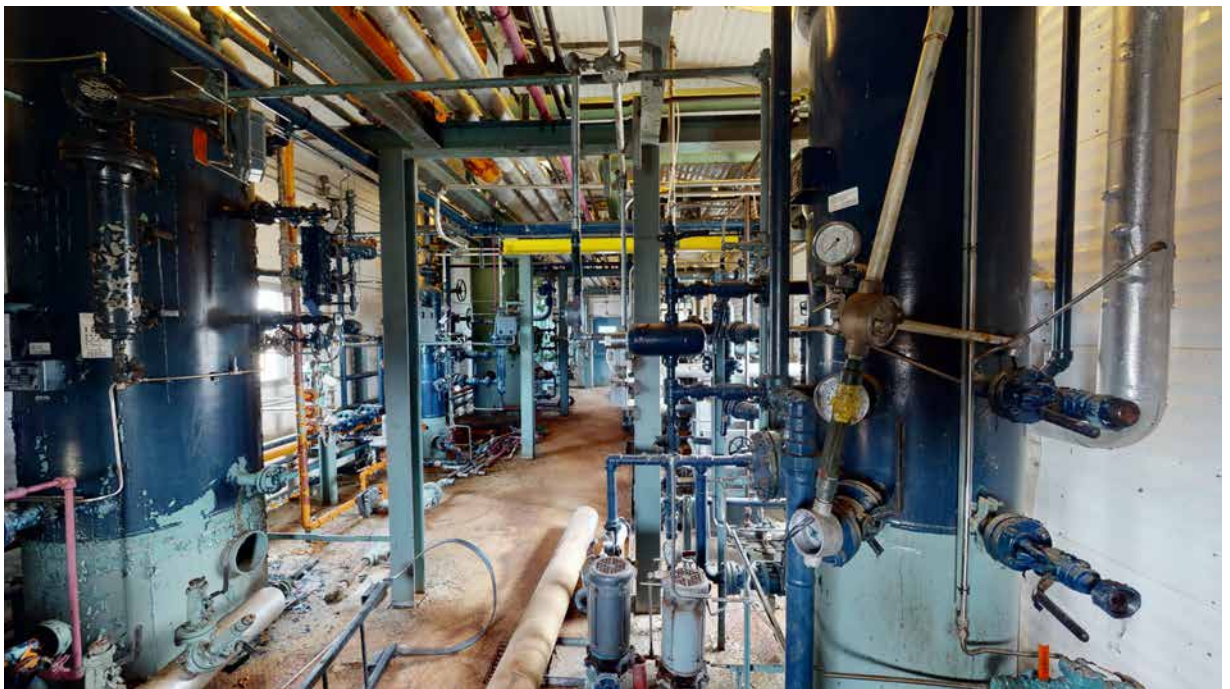
Take a 3D walkthrough at <https://bit.ly/3beFJB8>



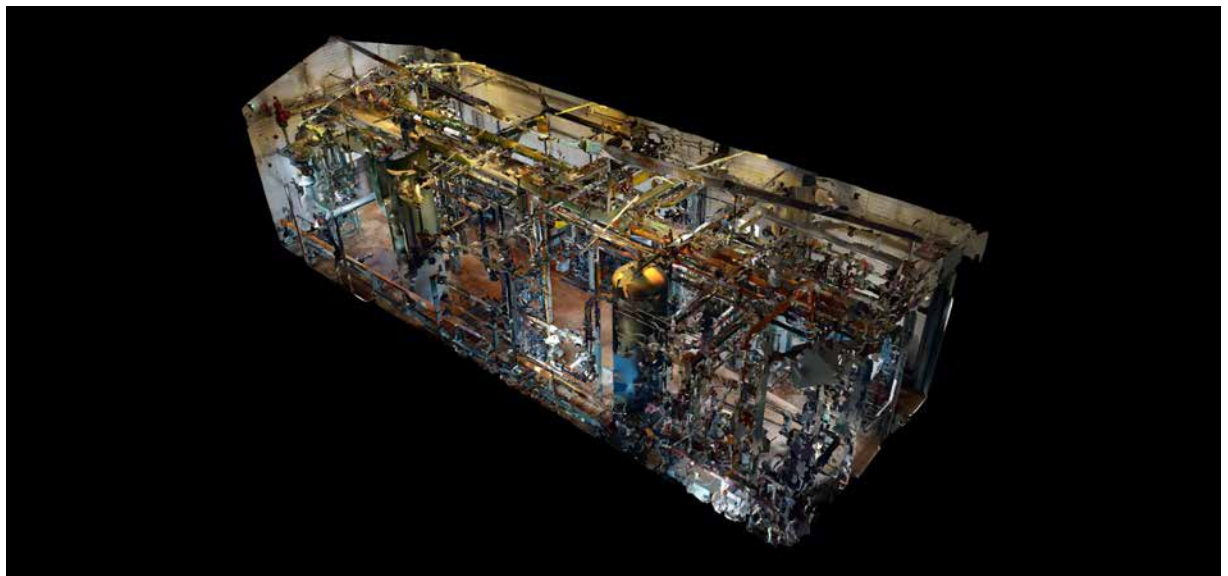












Take a 3D walkthrough at <https://bit.ly/3beFJB8>