



#1910

# Sour 72" ID x 20' 720psi 3 Phase Separator

*FOR IMMEDIATE SALE*



**A 2006 separator that only ran for 1 YEAR!** How does stuff sit this long with no one noticing?

This separator is obviously in great condition and is not reflective of its age – at all. It was used as a FWKO (water goes to CJV1909) so the gas and oil re-combines before it leaves the unit. However, we have all the drawings so we, or your field crew, can easily modify this. Insanely flexible with large nozzle sizes, three province registration, 3 phase dressed 3, metering, and a comprehensive end device package fully wired to JB's. Located SW of Edmonton for personal inspections and can be moved out year-round.

**FOR IMMEDIATE SALE**

#1910

# Sour 72" ID x 20' S/S x 720psi Separator



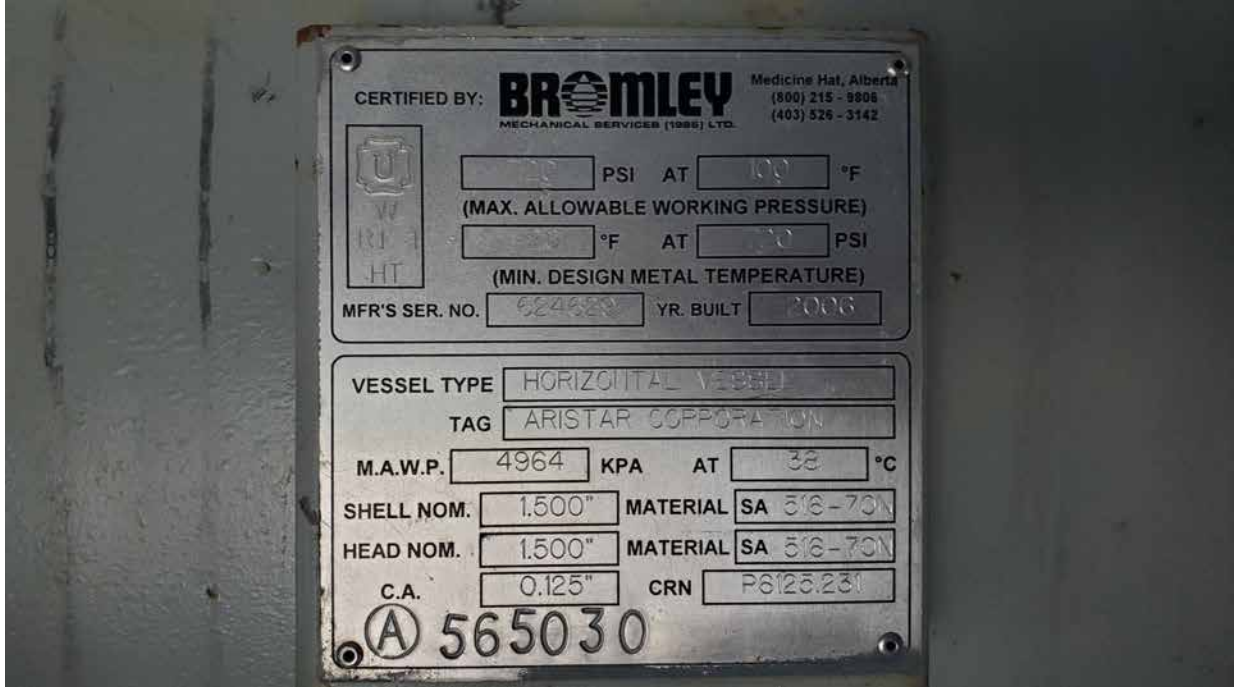
<b>Condition</b>	Field Ready &/or Minor Repair
<b>Manufactured</b>	Bromley Vessel, Packaged by TankStore 2006
<b>Location</b>	West Central, AB
<b>Registration</b>	AB/BC/SK
<b>Status / Availability</b>	Connected. Allow 2 weeks for disconnection.
<b>Service</b>	Sour Service, <b><u>Internally Coated</u></b>
<b>Connections</b>	10" Inlet / Outlet; 16" Water Boot, 6" oil & water outlet, Level control via bridles, 4" Dual Chamber Meter Run
<b>Dimensions</b>	Building/Skid is 13' 6" W x 25' L Ships 15' SW (with hoods removed) x 27' 6" SL x 16' 6" SH
<b>Electrical Notes</b>	Rosemount level/pressure/temp transmitters, 2" turbine flow meter on water leg, hi/low exhaust fans, fire, LEL and H2S detection, ESD's, interior/exterior lights w/ switches, all wired to junction boxes

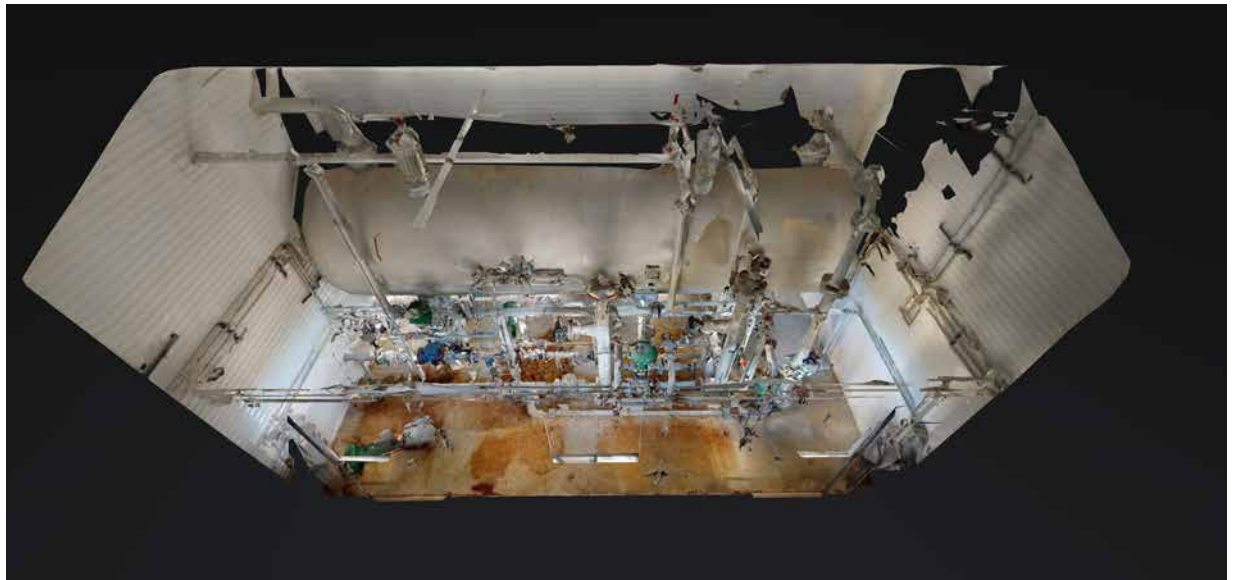


Take a 3D walkthrough at <https://bit.ly/3kml68g>









Take a 3D walkthrough at <https://bit.ly/3kml68g>