

The background image shows a large, light-colored industrial building, identified as a 3-phase separator. It has a gabled roof and a set of stairs with a metal railing leading to a platform in front of the entrance. The building is situated on a gravel surface. The entire image is overlaid with a semi-transparent blue filter.

CJV#1903

# 60" x 20' Sour 1309psi Horizontal 3 Phase Separator

CJV#1903

## 60" x 20' Sour 1309psi Horizontal 3 Phase Separator



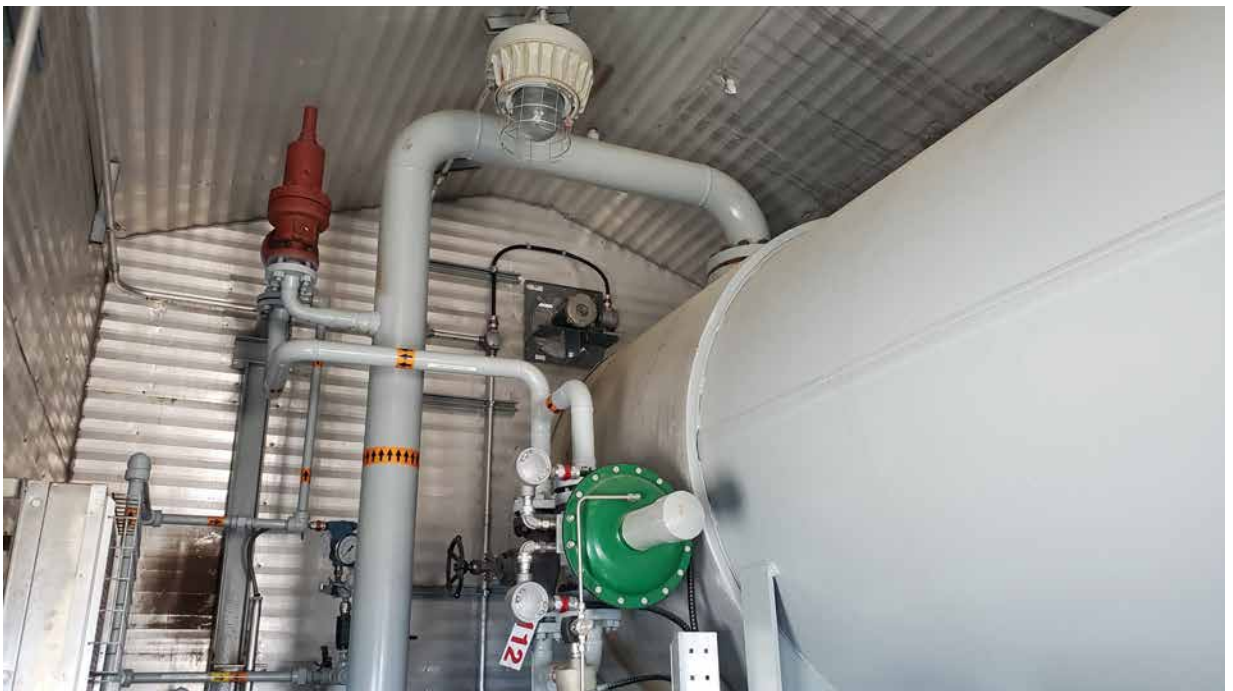
<b>Condition</b>	New / Reconditioned
<b>Vessel</b>	60" x 20' S/S x 1309psi c/w 18" water boot and bridles
<b>Location</b>	Drumheller area
<b>Status</b>	Available within 1 week
<b>Registration</b>	AB only
<b>Service</b>	Sour
<b>Phases</b>	3 Phase, dressed 3
<b>Vessel Connections</b>	6" Inlet/outlet; 2" drain/dump connections on vessel and boot. Dump controller on boot is bridle mounted.
<b>Instrumentation</b>	2" Turbine flow meter, level transmitters on water and HC bridles, 6" dual chamber SR meter run c/w FloBoss 103
<b>Electrical</b>	Interior/exterior lights w/ switches, blue/red beacons, high/low exhaust fan, ESD, XP electric heater, Catadyne heaters c/w 120V start and indicator lights, wired to JB's
<b>Building Dimensions</b>	12' x 26' x 15' H
<b>Package Comments</b>	Vessel was built in 1983 and originally designed for listed pressure. In 2015, the package was stripped down; and all instrumentation, piping, and electrical added in. Once it was installed ran for approximately 4 years before it was shut down again permanently.



Take a 3D walkthrough at <https://bit.ly/3fW3rTt>







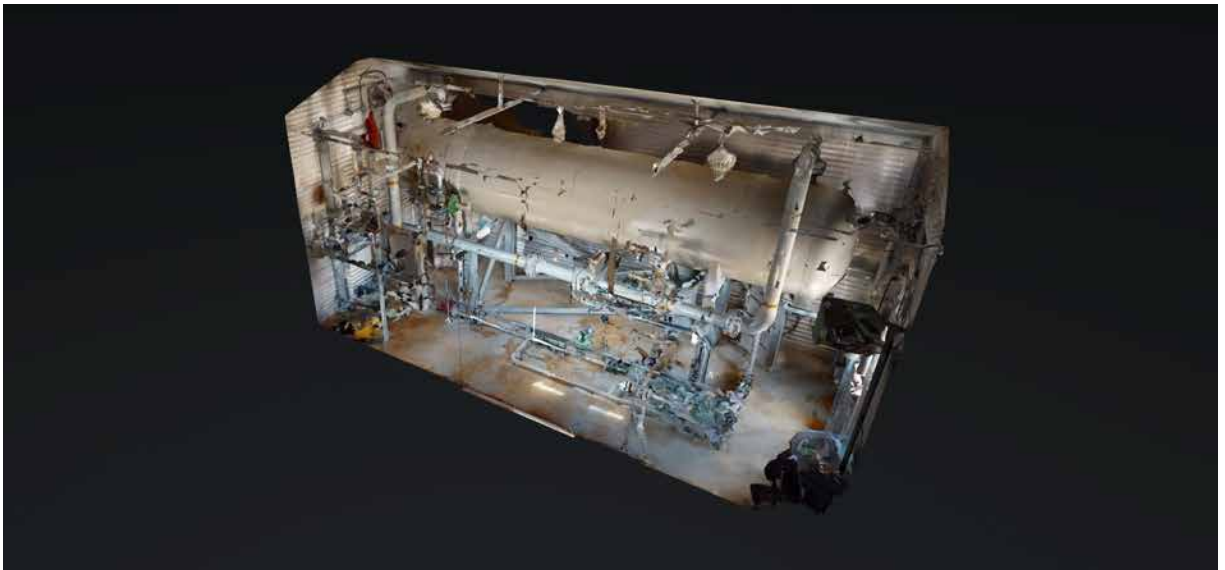












Take a 3D walkthrough at <https://bit.ly/3fW3rTt>