

DIMENSIONS FROM OTHERS

NO.	QTY	DESCRIPTION	REF.
40	1	1/4" THK PLATE (SEE NOTE 1) 30" x 11 1/16" LG	SA-36
41	2	1" x 1/2" THK FLAT BAR (SEE NOTE 2) 30" x 3/8" OD	SA-36
42	2	3/4" THK DISK (SEE NOTE 3) 30" x 3/8" OD	SA-36
43	1	30 3/8" OD x 28 3/8" ID x 1/4" THK PLATE	SA-36
44	4	2" x 1/2" THK PLATE x 2" LG	SA-36
45	4	2" x 3/8" THK PLATE x 6" LG	SA-36
46	1	2" x 3/8" THK PLATE x 2" LG	SA-36
47	1	2" SCH STD STEEL PIPE	SA-106-B
48	1	2 1/2" SCH STD STEEL PIPE x 8" LG	SA-106-B
49	1	2 1/2" SCH STD STEEL PIPE x 2" LG	SA-106-B
50	1	3/8" EYE BOLT (SEE NOTE 4)	SA-36
51	1	3/8" ROUND BAR (SEE NOTE 5) x 1" SHARP	SA-36
52	1	1/4" ROUND BAR (SEE NOTE 6) x 1" SHARP	SA-36
53	1	5/8" THK PLATE	SA-36
54	1	1/4" THK PLATE	SA-36
55	1	1/2" x 20" x 10" LG	SA-36
56	2	2" x 2" x 1/4" THK ANGLE x 12 1/2" LG	SA-36
57	2	1/4" THK PLATE x 2 3/4" x 10" LG	SA-36
58	1	1/4" THK PLATE x 10" x 12" LG	SA-36
59	1	1/4" THK PLATE (CUT AS SHOWN)	SA-36
60	1	1/4" THK PLATE (CUT AS SHOWN)	SA-36
61	1	3/4" x 20" ID x 1/8" THK GASKET (CUT AS SHOWN)	NEOPRENE
62	2	2" x 1/4" THK FLAT BAR x 8" LG	SA-36
63	4	1" x 1/4" FLAT BAR x 2" LG	SA-36
64	25	1/2" x 1/2" LG BOLT (1) NUT	SA-36
65	52	WHLDR BRGNS FOR 1/2" BOLT	NYLON
66	2	1/4" THK PLATE (CUT AS SHOWN)	SA-36
67	1	1/4" THK PLATE (CUT AS SHOWN)	SA-36
68	1	8" 1/2" OD x 37 1/2" C x 1/8" THK GASKET (CUT AS SHOWN)	NEOPRENE

REQ'D (1)

3929-HS

DO NOT SCALE FROM THIS DRAWING

ISSUED FOR APPROVAL 99/10/04

LARSEN & D'AMICO MFG. LTD.

CUSTOMER: **...** L7600.2

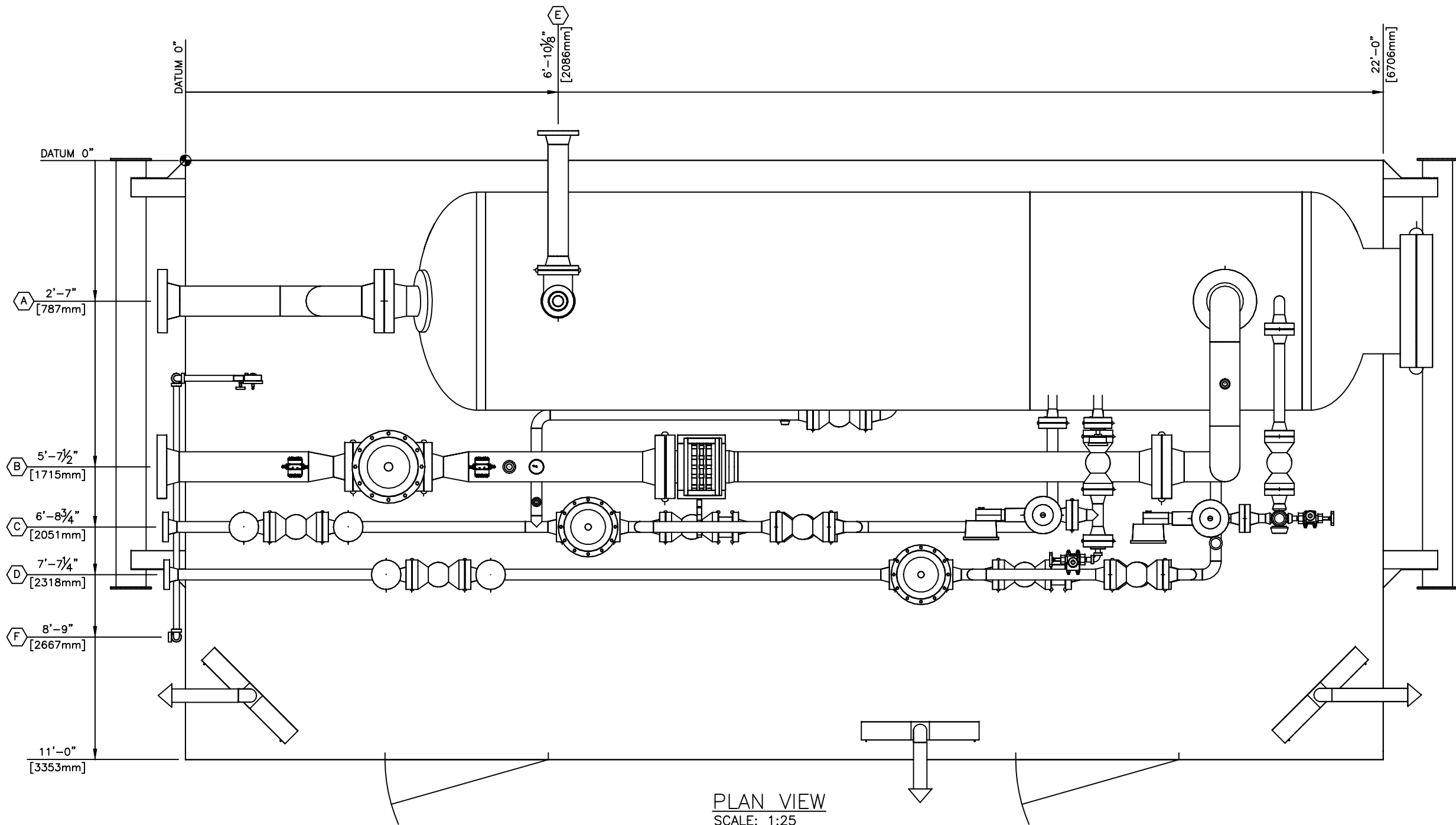
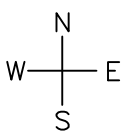
DESCRIPTION: **...**

DATE: 99/10/04

SCALE: NTS

SHOP ORDER No: 3929

DRAWING No: **LD-3853-A2**



PLAN VIEW
SCALE: 1:25

TAG	TAG DESCRIPTION	CONNECTION SIZE	ELEVATION FBOS		PROJECTION	
A	INLET	6"-600CL RFWN	23 5/16"	592mm	6 1/8"	156mm
B	GAS OUTLET	6"-600CL RFWN	23 9/16"	598mm	6 1/4"	159mm
C	WATER OUTLET	2"-600CL RFWN	18 5/16"	465mm	5"	127mm
D	OIL OUTLET	2"-600CL RFWN	18 5/16"	465mm	4 3/4"	121mm
E	PSV OUTLET	4"-150CL RFWN	96 9/16"	2452mm	6 1/2"	165mm
F	INSTRUMENT AIR INLET	1"-NPT 3000# ELB	8 5/8"	218mm	3 3/4"	95mm

PIPING MAY NOT BE EXACTLY AS SHOWN

SHIPPING DIMENSIONS
 LENGTH: 24'-9" [4544mm]
 WIDTH: 13'-0" [3962mm]
 HEIGHT: 11'-6" [3505mm]
 ESTIMATED WEIGHT: 52,000LBS

The information contained herein is the confidential property of CAPE Manufacturing Ltd. and is not for publication. The information is issued on the understanding that no part thereof shall be copied or communicated to a third party without authorization in writing from CAPE Manufacturing Ltd.

STAMPS, PERMITS AND APPROVALS

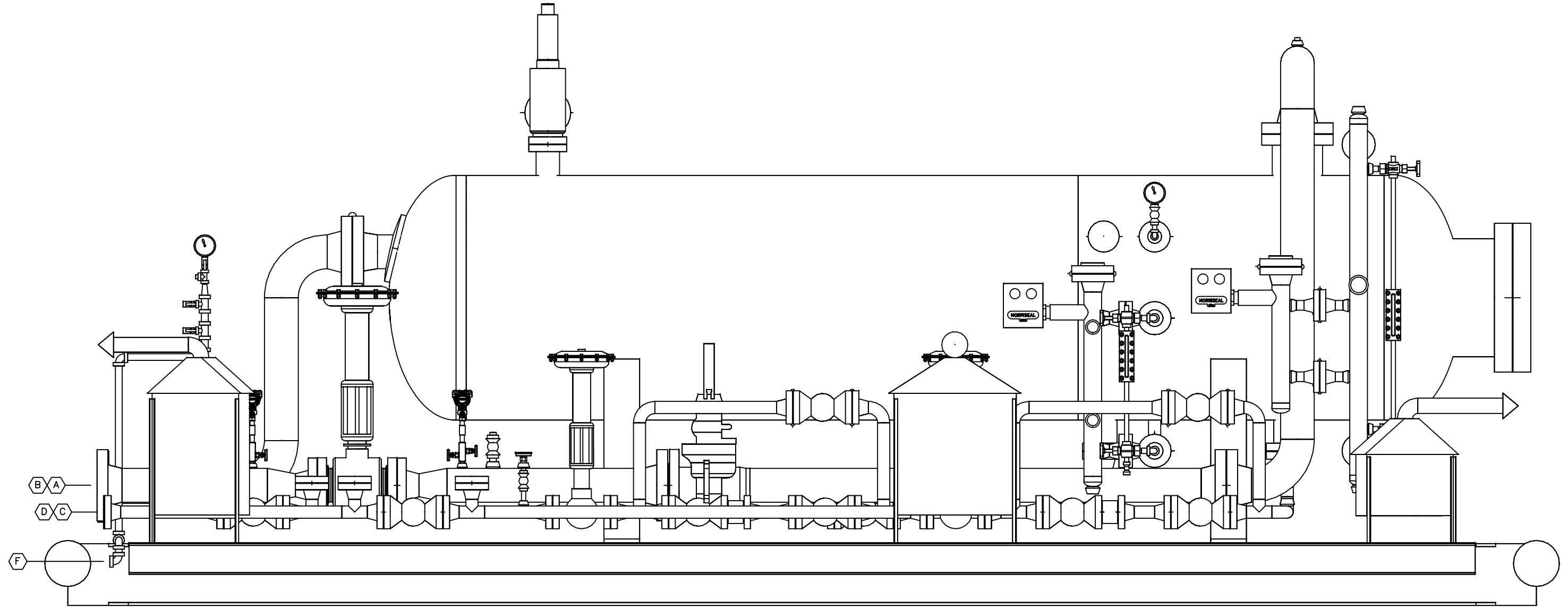
NO.	DATE	REVISIONS	DWN	CHK'D	APP.
0	20-05-25	ISSUED FOR CONSTRUCTION		KG	

crusader JV

4TH FLOOR, 909-17th AVE. SW CALGARY, AB T2T 0Z4
 Phone: (403)263-8078 Fax: (403)261-3609

DATE	20-05-04	CLIENT	LSD:
DESIGNED BY		TITLE	GENERAL ARRANGEMENT DRAWING FOR
DRAWN BY	KG		48" x 15'-0" s/s HORIZONTAL SOUR SEPARATOR
CHECKED BY		JOB NO.:	CML-201323
APPROVED BY		VESSEL SERIAL NO.:	HS-9813
SCALE:	SEE DWG	UNIT NO.:	BU-1000
		SHEET NO.:	1 OF 3
		DRAWING NO.:	CML-201323PLAN
		REV. NO.:	

PERMIT AND PROFESSIONAL STAMP AFFIXED APPLIES TO THE LATEST REVISION AS INDICATED IN TITLEBLOCK AND BY CLOADED AREAS IF SHOWN.



ELEVATION VIEW S
SCALE: 1:20

The information contained herein is the confidential property of CAPE Manufacturing Ltd. and is not for publication. The information is issued on the understanding that no part thereof shall be copied or communicated to a third party without authorization in writing from CAPE Manufacturing Ltd.

STAMPS, PERMITS AND APPROVALS

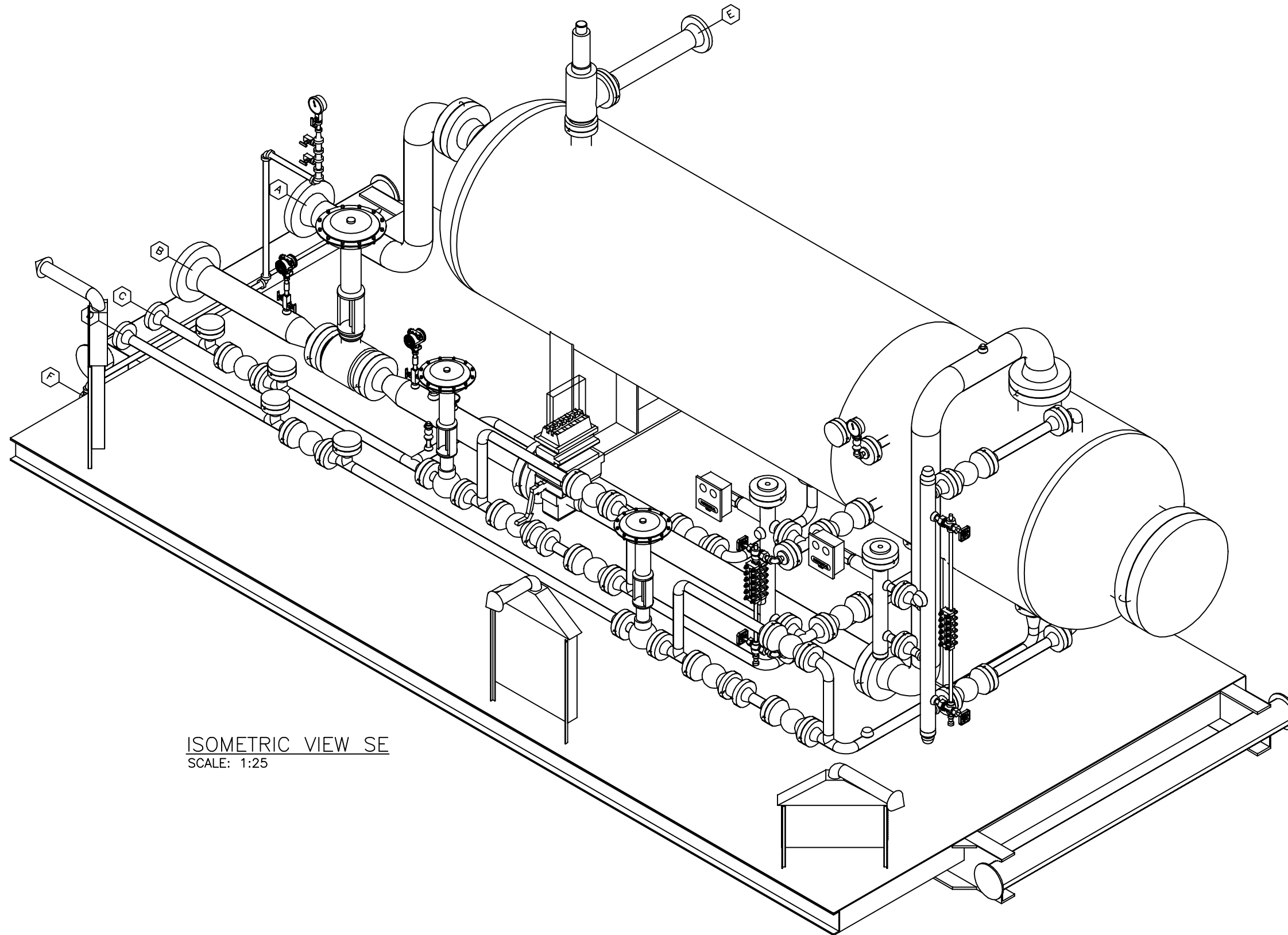
NO.	DATE	REVISIONS	DWN	CHK'D	APP.
0	20-05-25	ISSUED FOR CONSTRUCTION		KG	

crusader JV

4TH FLOOR, 909-17th AVE. SW CALGARY, AB T2T 0Z4
Phone: (403)263-8078 Fax: (403)261-3609

DATE	20-05-04	CLIENT	LSD:	
DESIGNED BY		TITLE	GENERAL ARRANGEMENT DRAWING FOR	
DRAWN BY	KG		48" x 15'-0" s/s HORIZONTAL SOUR SEPARATOR	
CHECKED BY			1440 PSIG @ 0°F / 100°F	
APPROVED BY		JOB NO.:	VESSEL SERIAL NO.	UNIT NO.:
		CML-201323	HS-9813	BU-1000
SCALE:	SEE DWG	SHEET NO.:	DRAWING NO.:	REV. NO.:
		2 OF 3	CML-201323ELE	△

PERMIT AND PROFESSIONAL STAMP AFFIXED APPLIES TO THE LATEST REVISION AS INDICATED IN TITLEBLOCK AND BY CLOADED AREAS IF SHOWN.



ISOMETRIC VIEW SE
SCALE: 1:25

The information contained herein is the confidential property of CAPE Manufacturing Ltd. and is not for publication. The information is issued on the understanding that no part thereof shall be copied or communicated to a third party without authorization in writing from CAPE Manufacturing Ltd.

STAMPS, PERMITS AND APPROVALS

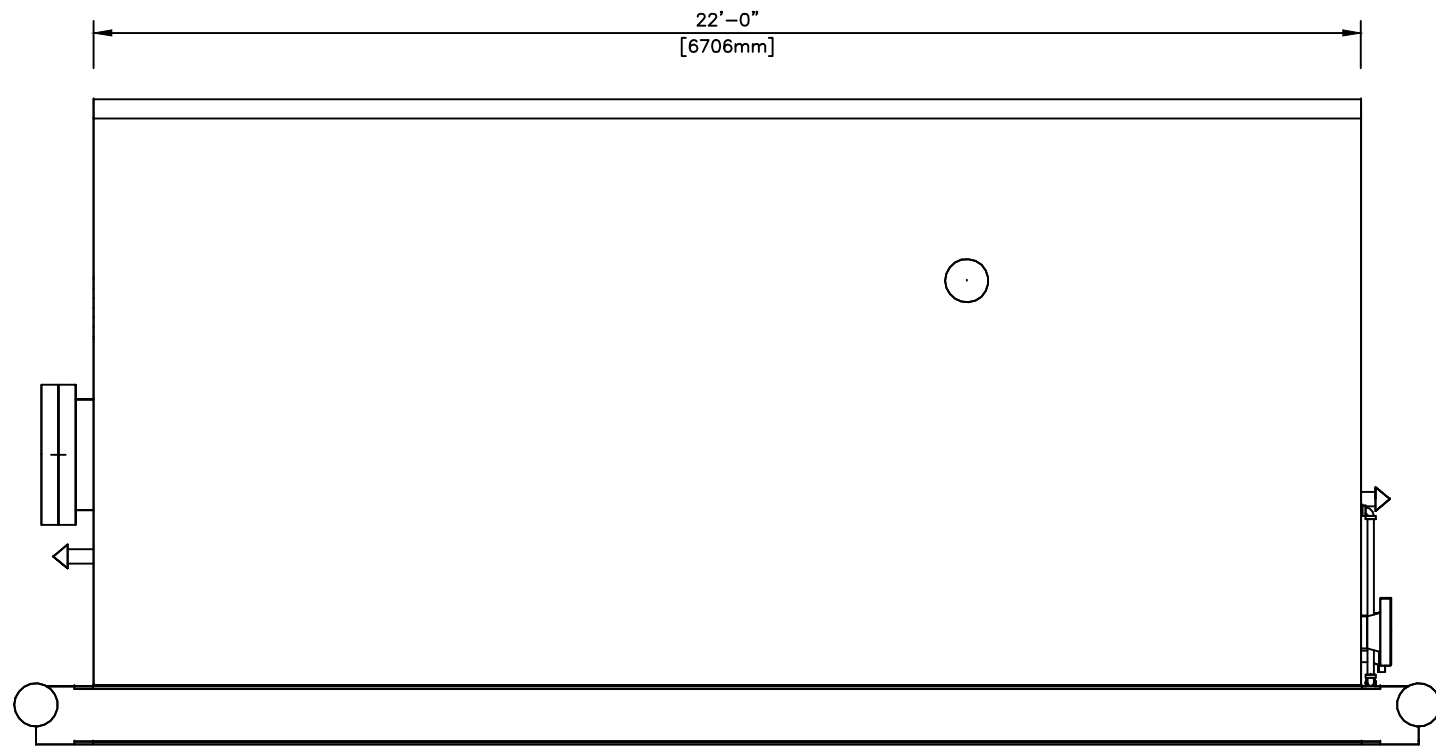
NO.	DATE	REVISIONS	DWN	CHK'D	APP.
0	20-05-25	ISSUED FOR CONSTRUCTION		KG	

crusader JV

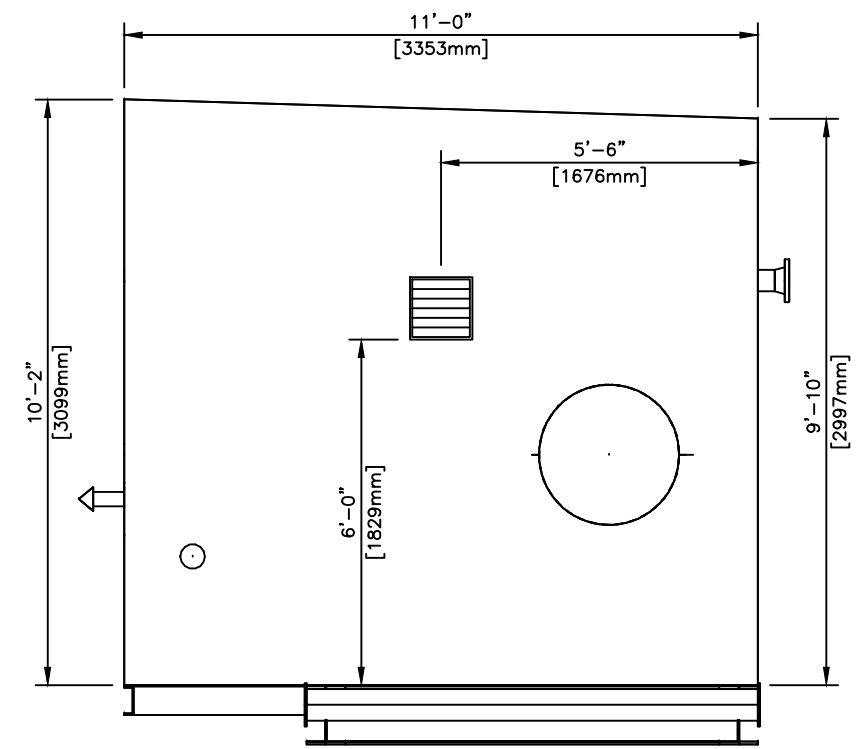
4TH FLOOR, 909-17th AVE. SW CALGARY, AB T2T 0Z4
Phone: (403)263-8078 Fax: (403)261-3609

DATE	20-05-04	CLIENT	LSD:
DESIGNED BY		TITLE	GENERAL ARRANGEMENT DRAWING FOR
DRAWN BY	KG		48" x 15'-0" s/s HORIZONTAL SOUR SEPARATOR
CHECKED BY			1440 PSIG @ 0°F / 100°F
APPROVED BY		JOB NO.:	CML-201323
SCALE:	SEE DWG	VESSEL SERIAL NO.:	HS-9813
		UNIT NO.:	BU-1000
		SHEET NO.:	3 OF 3
		DRAWING NO.:	CML-201323ISO
		REV. NO.:	△

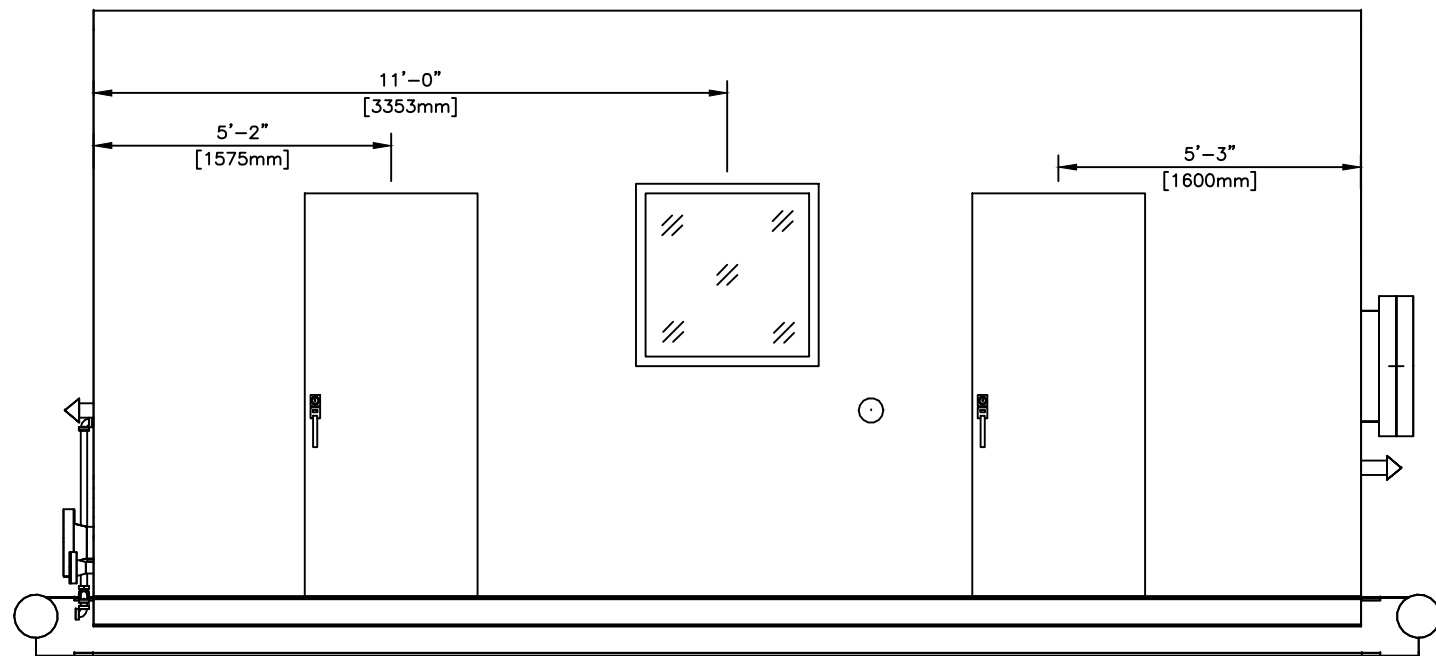
PERMIT AND PROFESSIONAL STAMP AFFIXED APPLIES TO THE LATEST REVISION AS INDICATED IN TITLEBLOCK AND BY CLOADED AREAS IF SHOWN.



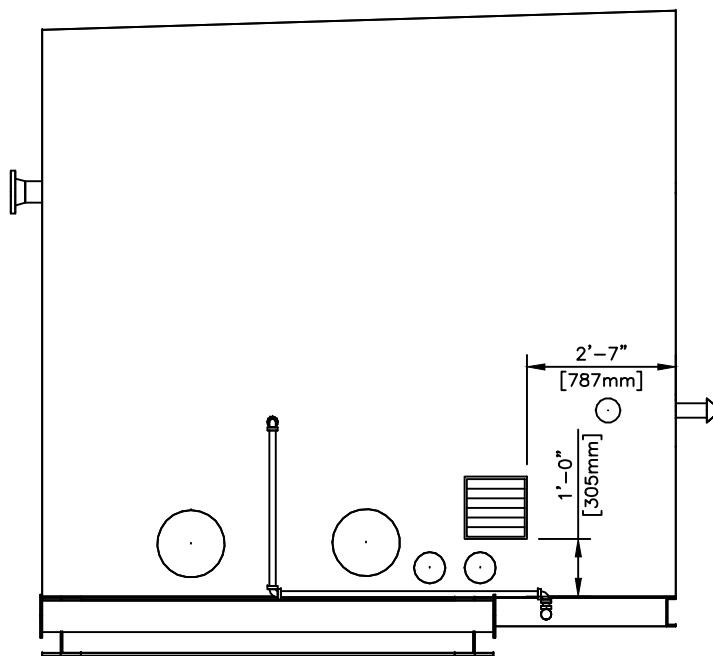
ELEVATION VIEW N
SCALE: 1:40



ELEVATION VIEW E
SCALE: 1:40



ELEVATION VIEW S
SCALE: 1:40



ELEVATION VIEW W
SCALE: 1:40

The information contained herein is the confidential property of CAPE Manufacturing Ltd. and is not for publication. The information is issued on the understanding that no part thereof shall be copied or communicated to a third party without authorization in writing from CAPE Manufacturing Ltd.

STAMPS, PERMITS AND APPROVALS

NO.	DATE	REVISIONS	DWN	CHK'D	APP.
0	20-05-25	ISSUED FOR CONSTRUCTION		KG	

crusader JV

4TH FLOOR, 909-17th AVE. SW CALGARY, AB T2T 0Z4
Phone: (403)263-8078 Fax: (403)261-3609

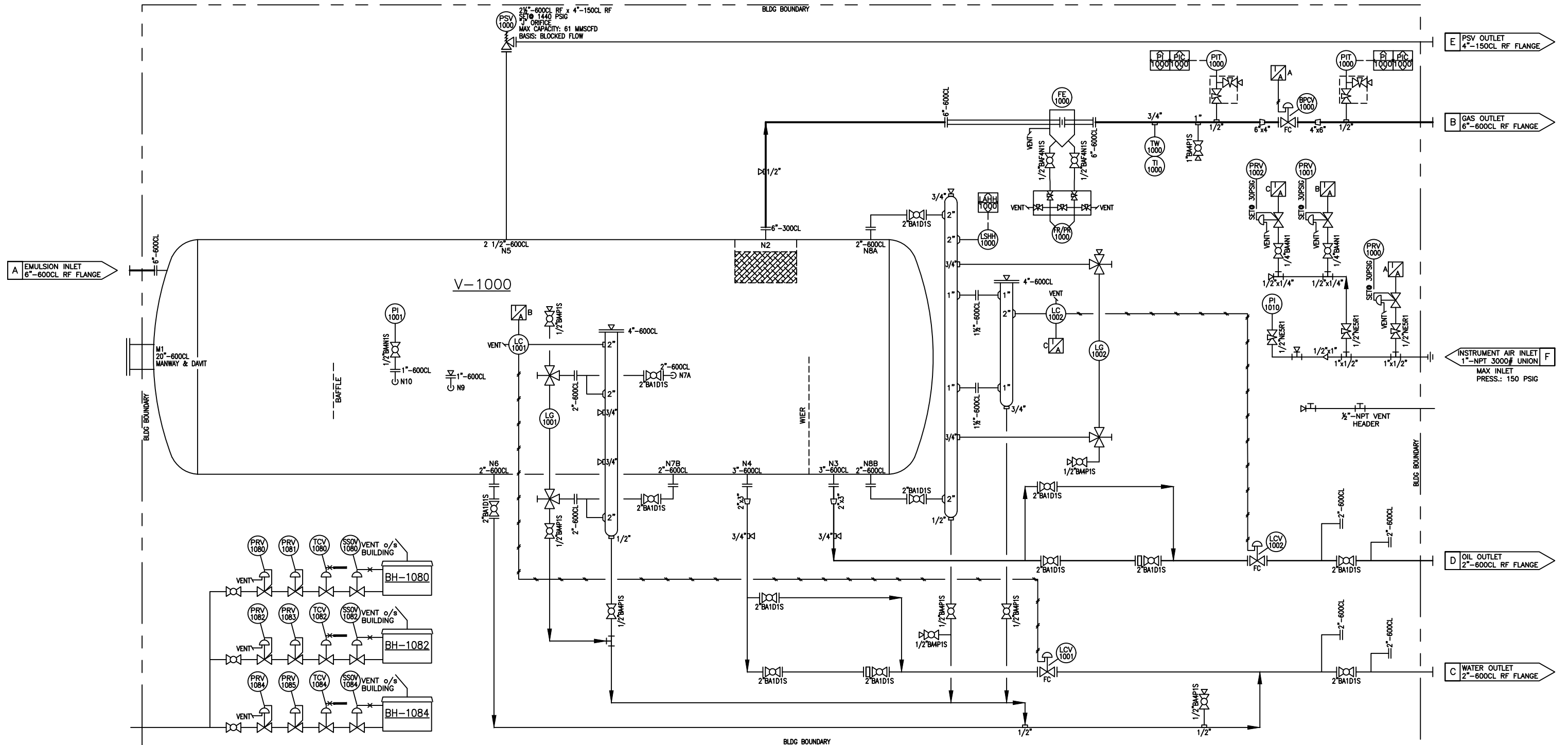
DATE	20-05-04	CLIENT	LSD:
DESIGNED BY		TITLE	BUILDING DRAWING FOR
DRAWN BY	KG		48" x 15'-0" s/s HORIZONTAL SOUR SEPARATOR
CHECKED BY			1440 PSIG @ 0°F / 100°F
APPROVED BY		JOB NO.:	CML-201323
SCALE:	SEE DWG	VESSEL SERIAL NO.:	HS-9813
		UNIT NO.:	BU-1000
		SHEET NO.:	1 OF 1
		DRAWING NO.:	CML-201323BLDG
		REV. NO.:	

PERMIT AND PROFESSIONAL STAMP AFFIXED APPLIES TO THE LATEST REVISION AS INDICATED IN TITLEBLOCK AND BY CLOADED AREAS IF SHOWN.

V-1000
 48" HORIZONTAL SEPARATOR VESSEL
 48" OD x 15'-0" s/s
 MAWP: 1440 PSIG
 0°F/100°F
 1/8" CORROSION ALLOWANCE
 3 PHASE, DRESSED 3 PHASE
 RT-1, PWHT
 CRN: L7688.213

BH-1080/1082
 NATURAL GAS HEATERS
 MAKE: CATADYNE, MK SERIES
 SIZE: 24" x 24"
 c/w REGULATOR, THERMOSTAT, S.S.O.V.,
 PROTECTION GRILL, 12VDC START-UP,
 VENT HOOD & 30' START-UP CABLE
 CSA-XP

BH-1084
 NATURAL GAS HEATERS
 MAKE: CATADYNE, MK SERIES
 SIZE: 12" x 24"
 c/w REGULATOR, THERMOSTAT, S.S.O.V.,
 PROTECTION GRILL, 12VDC START-UP,
 VENT HOOD & 30' START-UP CABLE
 CSA-XP



The information contained herein is the confidential property of CAPE Manufacturing Ltd. and is not for publication. The information is issued on the understanding that no part thereof shall be copied or communicated to a third party without authorization in writing from CAPE Manufacturing Ltd.

STAMPS, PERMITS AND APPROVALS

NO.	DATE	REVISIONS	DWN	CHK'D	APP.
0	20-05-25	ISSUED FOR CONSTRUCTION		KG	

crusader JV

4TH FLOOR, 909-17th AVE. SW CALGARY, AB T2T 0Z4
 Phone: (403)263-8078 Fax: (403)261-3609

DATE	20-05-04
DESIGNED BY	CAPE MFG.
DRAWN BY	KG
CHECKED BY	
APPROVED BY	
SCALE	N.T.S.
LSD:	
TITLE PIPING & INSTRUMENTATION DRAWING FOR	
48" OD x 15'-0" s/s HORIZONTAL SOUR SEPARATOR	
1440 PSIG @ 0°F / 100°F	
JOB NO.:	CML-201323
VESSEL SERIAL NO.:	
UNIT NO.:	BU-1000
SHEET NO.:	1 OF 2
DRAWING NO.:	CML-201323PID
REV. NO.:	

PERMIT AND PROFESSIONAL STAMP AFFIXED APPLIES TO THE LATEST REVISION AS INDICATED IN TITLEBLOCK AND BY CLOADED AREAS IF SHOWN.

NOTES:

1. QUANTITIES IN B.O.M. ARE FOR ONE (1) UNIT.
2. REMOVE ALL FLOATS/DISPLACERS FROM ALL LEVEL CONTROLLERS/SWITCHES; TAG & CRATE FOR SHIPMENT.
3. PROTECT ALL OPENINGS FOR SHIPMENT.
4. PIPING & INSTRUMENTS SECURELY SUPPORTED.

VALVE LIST

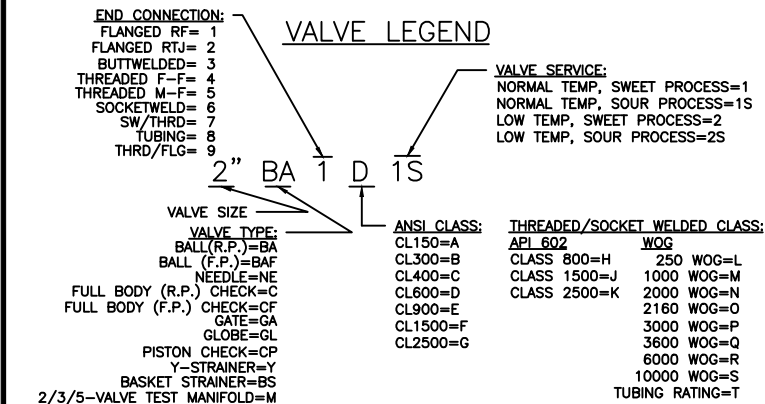
TAG	QTY.	MAKE	DESCRIPTION
¼"BA4N1	2		½"-NPT 2000WOG RP BALL VALVE
½"BA4N1S	1		½"-NPT 2000WOG RP BALL VALVE, NACE
½"BA4P1S	8		½"-NPT 3000WOG RP BALL VALVE, NACE
½"BAF4N1S	2		½"-NPT 2000WOG FP BALL VALVE, NACE
1"BA4P1S	1		1"-NPT 3000WOG RP BALL VALVE, NACE
2"BA1D1S	13		2"-600CL RF RP BALL VALVE, NACE
½"NE5R1	3		½"-NPT Mx F 6000PSIG NEEDLE VALVE

BILL OF MATERIALS

TAG	QTY.	MAKE	DESCRIPTION
BPCV-1200	1	CVS (RECONDITIONED)	"E" SERIES PRESSURE CONTROL VALVE, 4"-600CL RF, NACE LCC BODY, EQ% 316 SST TRIM c/w 667-45 ACT., FC
FE-1000	1	CANALTA (RECONDITIONED)	DUAL CHAMBER METER RUN, 6"-600CL, RF SCH. 80 AGA FIG. 2000 SPEC
FR/PR-1000	1	BARTON	2 PEN RECORDER c/w 5-VALVE MANIFOLD
LC-1001 LC-1002	2	NORRISSEAL	1001A LEVEL CONTROLLER, 2"-NPT, PNEUMATIC DIRECT, SNAP ACTING c/w PVC DISPLACER
LCV-1001 LCV-1002	2	CVS (RECONDITIONED)	"E" SERIES LEVEL CONTROL VALVE, 2"-600CL RF NACE, EQ% 316 SST TRIM c/w 667-40 ACT., FC
LG-1001	1	PENBERTHY	1TM5 LEVEL GLASS c/w 330J GAUGE VALVES, ¾"-NPT STD, 1750 PSIG MAWP, 7/8" VISIBLE GLASS
LG-1002	1	PENBERTHY	1RM7 LEVEL GLASS c/w 330J GAUGE VALVES, ¾"-NPT STD, 2440 PSIG MAWP, 10¼" VISIBLE GLASS
LSHH-1000	1	SOR	HIGH LEVEL SWITCH, 2"-NPT, ELECTRIC MODEL: 1510B SNAP ACTING, 316SST FLOAT & BODY
PI-1001	1	WGI	PRESSURE GAUGE, LIQUID FILLED, SS 4" FACE x ½"-NPT, 0-1500 PSIG
PI-1010	1	WGI	PRESSURE GAUGE, LIQUID FILLED, SS 4" FACE x ½"-NPT, 0-200 PSIG
PIT-1000	1	ROSEMOUNT	3051 PRESSURE TRANSMITTER, 0-10000 PSIG MODEL: 3051TG5A2B21AC6TR
PIT-1001	1	ROSEMOUNT	3051 PRESSURE TRANSMITTER, 0-4000 PSIG MODEL: 3051TG4A2B21AC6
PRV-1000	1	CVS	PRESSURE REGULATOR, ¼"-NPT, 5-35 PSIG RANGE, STD
PRV-1001 PRV-1002	2	BELLOFRAM	PRESSURE REGULATOR, ¼"-NPT, 0-30PSIG RANGE, STD
PSV-1000	1	FARRIS	PRESSURE SAFETY VALVE, MODEL: 2600 2½"-600CL RF x 4"-150CL RF, WCB BODY "J" ORIFICE, SET @ 1440 PSIG
TI-1000 TW-1000	1	TREND	TEMPERATURE INDICATOR 3" FACE x ½"-NPT, 0/240°F c/w ½"-FNPT x ¾"-MNPT THERMOWELL

SKID & BUILDING DESCRIPTION

TAG	QTY.	DESCRIPTION
BUILDING		11'-0" WIDE x 22'-0" LONG, SELF FRAMER
ROOF		SHED STYLE, 9'-10" LOW EAVE, 10'-2" HIGH EAVE
INSULATION		R12 IN ROOF & WALLS
DOORS	2	3' x 7' STEEL
HARDWARE		CHECK CHAIN, PANIC BAR, LOCK, & WEATHER STRIPPING
WINDOWS	1	36" x 36" SLIDING w/ SCREEN
VENTS	2	12" x 12" ADJUSTABLE LOUVRES & SCREENS
ACCESSORIES		NONE
HEATERS	3	CATADYNE, SEE PID
EXHAUST FAN		NONE
SKID		11'-0" WIDE x 24'-9" LONG
FLOOR		¾" CHECKER PLATE, 2" CONTAINMENT
INSULATION		NONE



The information contained herein is the confidential property of CAPE Manufacturing Ltd. and is not for publication. The information is issued on the understanding that no part thereof shall be copied or communicated to a third party without authorization in writing from CAPE Manufacturing Ltd.

STAMPS, PERMITS AND APPROVALS

PERMIT AND PROFESSIONAL STAMP AFFIXED APPLIES TO THE LATEST REVISION AS INDICATED IN TITLEBLOCK AND BY CLOADED AREAS IF SHOWN.	
--	--

NO.	DATE	REVISIONS	DWN	CHK'D	APP.
0	20-05-25	ISSUED FOR CONSTRUCTION	KG		

4TH FLOOR, 909-17th AVE. SW CALGARY, AB T2T 0Z4
 Phone: (403)263-8078 Fax: (403)261-3609

DATE	20-05-05	LSD:		
DESIGNED BY		TITLE PIPING & INSTUMENTATION DRAWING FOR		
DRAWN BY	KG	48" OD x 15'-0" s/s HORIZONTAL SOUR SEPARATOR		
CHECKED BY		1440 PSIG @ 0°F / 100°F		
APPROVED BY		JOB NO.: CML-201323	VESSEL SERIAL NO.:	UNIT NO.: BU-1000
SCALE:	N.T.S.	SHEET NO.: 2 OF 2	DRAWING NO.: CML-201323BOM	REV. NO.: