

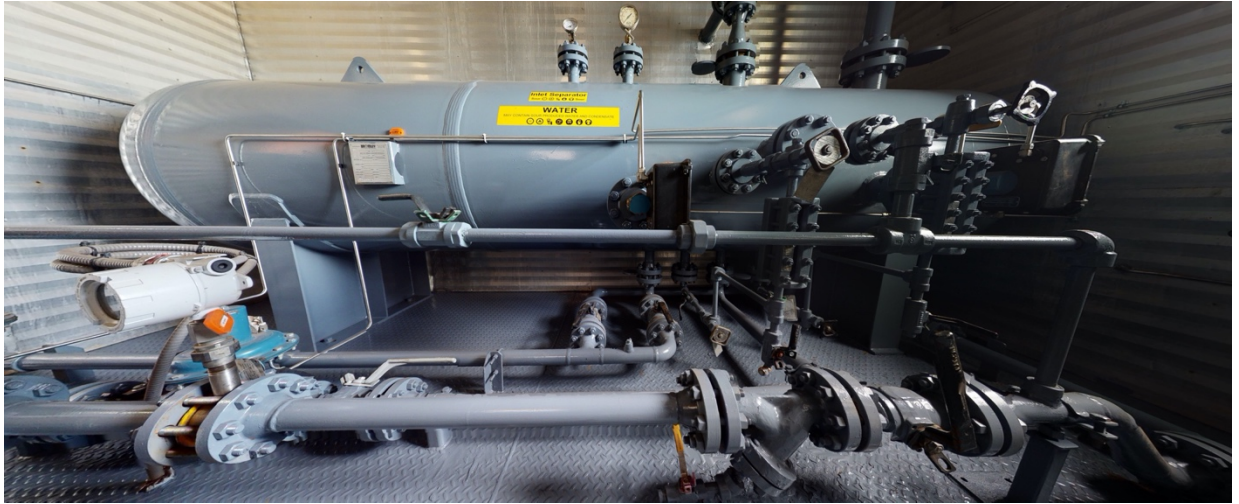


CJV#1880

# 36" OD x 12' Sour 1440psi 3 Phase Horizontal Separator Package

# CJV#1880

## 36" OD x 12' Sour 1440psi 3 Phase Horizontal Separator Package



<b>Condition</b>	Field Ready / Reconditioned 2020
<b>Vessel</b>	Bromley Mechanical Services 2008 in Argo package
<b>Location</b>	Halkirk, AB
<b>Status</b>	Disconnected
<b>Registration</b>	AB/BC/SK
<b>Service</b>	Sour
<b>Phases</b>	3 Phase, dressed 3
<b>Vessel Connections</b>	4" 600# inlet/outlet, 2"600# dump & drain connections.
<b>Meter Run</b>	4" 600# dual chamber
<b>Instrumentation</b>	ROC (Scada) system by Spartan.
<b>Electrical</b>	Solar panel, Scada antenna & mounting posts.
<b>Building Dimensions</b>	10' x 16' on a 10' x 19' skid
<b>Package Comments</b>	2) 24" x 24" Cata-Dyne heaters, Feb/20 UT inspection on file, drawings on file and available on request.



Take a 3D walkthrough at <https://bit.ly/2B34m6e>

# Technical Description

## 1.0 VESSEL

<u>TAG #</u>	<u>QTY</u>	<u>DESCRIPTION</u>
V-100	1	<p><b>36" OD x 12'- 0" S/S x 1440 PSI MAWP HORIZONTAL VESSEL</b>            Manufactured in 2008 by Bromley Mechanical Services Inc.            Reconditioned in 2020 by CAPE Manufacturing            CRN: U5080.21            A#: 589926            "U" Stamped            1/8" Corrosion Allowance            130°F Design Temperature            M.D.M.T.-20°F @ 1440 Psig            RT-1            PWHT</p> <p style="text-align: right;">Designed 3 Phase, Dressed 3 Phase</p>

### VESSEL CONNECTIONS:

N1	Inlet	1	-	4" NPS	CL600 RFLWN
N2	Gas Outlet	1	-	4" NPS	CL600 RFLWN
N3	Water Drain	1	-	2" NPS	CL600 RFWN
N4	Water Out	1	-	2" NPS	CL600 RFWN
N5	Water LLC	1	-	3" NPS	CL600 RFLWN
N6	PSV	1	-	3" NPS	CL600 RFLWN
N7	Oil LLC	1	-	3" NPS	CL600 RFLWN
N8	Oil Out	1	-	2" NPS	CL600 RFWN
N9	LDSH	1	-	3" NPS	CL600 RFLWN
N10 a/b	Water LLG	2	-	2" NPS	CL600 RFWN
N11 a/b	Oil LLG	2	-	2" NPS	CL600 RFWN
N12	TI	1	-	2" NPS	CL600 RFWN
N13	PI	1	-	2" NPS	CL600 RFWN
M1	Manway blind & Davit arm	1	-	18" NPS	CL600 RFHB c/w

## 2.0 INSTRUMENTATION

<u>TAG #</u>	<u>QTY</u>	<u>DESCRIPTION</u>
LC-1001/2	2	<p><b>NORRISEAL 1001A LEVEL CONTROLLERS</b>            Model# 1001A            2" NPT, Sour Service            L.H. or R.H. Mount, Direct            Snap Acting            C/w 1-7/8" x 12" PVC Displacer</p>

LCV-1001	1	<p><b>NORRISEAL LIQUID CONTROL VALVE</b>  Model # 2220  2" CL600 RF Process Connection, LCC Body  3/8" SST Trim, LCC Body  Fail Closed  Standard Sour Service</p>
LCV-1002	1	<p><b>NORRISEAL LIQUID CONTROL VALVE</b>  Model # 2220  2" CL600 RF Process Connection, LCC Body  3/4" SST Trim, LCC Body  Fail Closed  Standard Sour Service</p>
LG-1001	1	<p><b>QUALITY OR EQUAL LEVEL GAUGE</b>  Q5T20 Transparent  1/2" NPT, 1500 Psi @ 100°F  Visual Length 7 7/8", Nace Service  C/w Model 330J Gauge Valves, 3/4" x 1/2" NPT</p>
LG-1002	1	<p><b>QUALITY OR EQUAL LEVEL GAUGE</b>  Q6R20 Reflex  1/2" NPT, 2375 Psi @ 100°F  Visual Length 9 1/8", Nace Service  C/w Model Q146 Gauge Valves, 3/4" x 1/2" NPT</p>
FM-1002 FQIT-1002	1	<p><b>PRIMARY FLO TURBINE METER</b>  2" CL600 Process Connections  1/2" Metering  0.75 - 7.5 GPM Capacity  C/w Magnetic Pickup  <b>C/w NUFLO TOTALIZER</b>  MC-III Flow Analyzer  Explosion Proof, 4-20mA Output</p>
FE-1000 <b>(Reconditioned)</b>	1	<p><b>DANIELS OR EQUAL SENIOR METER RUN</b>  4" CL600 RF, Sch. 80, Nace Service Trim  Built to AGA 2000 SPEC  One (1) 1" CL3000 TOL and One (1) 3/4" CL3000 TOL Downstream  1 1/2 Hour Hydro Test, 100% X-Ray, PWHT, 85" OAL  C/w Pin Style Conditioner</p>
BPCV-1000	1	<p><b>MANUAL GLOBE BACK PRESSURE CONTROL VALVE</b>  3" CL600 RF Globe Valve, Nace Service</p>
PSV-1000	1	<p><b>TAYLOR OR EQUAL PRESSURE RELIEF VALVE</b>  Model 8200  2" CL600 Inlet x 3" CL150 Outlet  Nace Service Trim, WCB Body  "G" Orifice, 1253 Psig Set Pressure</p>

PH-1001	1	<b>WGI OR EQUAL PRESSURE GAUGE</b> Silicone Filled 4" dia. Face x 1/2" NPT Bottom Mount End Connection SS Case and Internals 0 to 1,500 Psi Dual Scale
TI-1001 TW-1001	1	<b>MASTER-TEMP 300 OR EQUAL TEMPERATURE GAUGE</b> 1/2" NPT Back Connection 3" Dial, 9" Stem -40 to 160°F Range - Dual Scale C/w 1/2" FNPT x 3/4" MNPT x 9.25" OAL, 7.5" U, 316 SST Thermowell

### 3.0 SKID & BUILDING SPECIFICATIONS

<u>TAG #</u>	<u>QTY</u>	<u>DESCRIPTION</u>
SK-100	1	<b>SKID BASE, 10'-0" W X 18'-6" L</b> Checker Plate Two (2) End Rolls
B-100	1	<b>SELF FRAMER BUILDING</b> 10'-0" Wide x 16'-0" Long Shed Style Roof One (1) 3'-0" x 7'-0" Foam Panel Door, Window, Check Chain, Panic-Hardware, Lock, and Weather-Stripping Two (2) Sliding Window c/w Screen Two (2) Louvers c/w Screen
BH-1080/82	2	<b>CATADYNE 24" x 24" MK BUILDING HEATERS</b> Sweet Natural Gas 12 VDC Starting Element with 30' Cables C/w Grill, Vent Hood, Safety Shutoff, 912 Regulator, Maxitrol Regulator and Thermostat

### 4.0 MANUAL VALVES

<u>QTY</u>	<u>DESCRIPTION</u>
6	2" CL600 RF RP, Ball Valves, Nace Service
5	1" CL3000 NPT RP, Ball Valves, Nace Service
4	3/4" CL3000 NPT RP, Ball Valves, Nace Service
4	1/2" CL3000 NPT RP, Ball Valves, Nace Service
5	1/2" CL6000 NPT, Needle Valves, SS
1	2" CL600 RF, Y Strainer, Nace Service

## 5.0 FUEL GAS SYSTEM

<u>TAG #</u>	<u>QTY</u>	<u>DESCRIPTION</u>
V-1010	1	<b>8" OD X 36" OAL 150 PSI MAWP FUEL GAS SCRUBBER</b> Mechanical HLSD (Reduces Outlet to 1" NPT) 1/16" Corrosion Allowance -20/200°F Design Temperature Registered in Alberta, BC, Sask.
PRV-1010	1	<b>FISHER 627 PRESSURE REGULATOR</b> 1" NPT, Body Material: WCC Steel Spring Case Material: Aluminum 1/8" Orifice Aluminum Nylon Disk Spring Range 70-150 Psi Maximum Inlet Pressure: 2000 Psi
PSV-1010	1	<b>TAYLOR OR EQUAL PRESSURE RELIEF VALVE</b> Model 8250 1" MNPT Inlet x 1" FNPT Outlet Nace Service Trim, WCB Body "E" Orifice, 150 Psig Set Pressure
PI-1000/10	2	<b>WGI OR EQUAL PRESSURE GAUGES</b> Silicone Filled 2-1/2" dia. Face x 1/4" NPT Bottom Mount End Connection SS Case and Internals One (1) 0 to 60 Psi Dual Scale One (1) 0 to 200 Psi Dual Scale
PRV-1000	1	<b>FISHER OR EQUAL 67CFR INSTRUMENT REGULATOR</b> 1/4" FNPT Connections Sweet Service Trim 250 Psig MAWP 0 to 35 Spring Range

## 6.0 ELECTRICAL SYSTEM

Electrical equipment is supplied and installed by others.

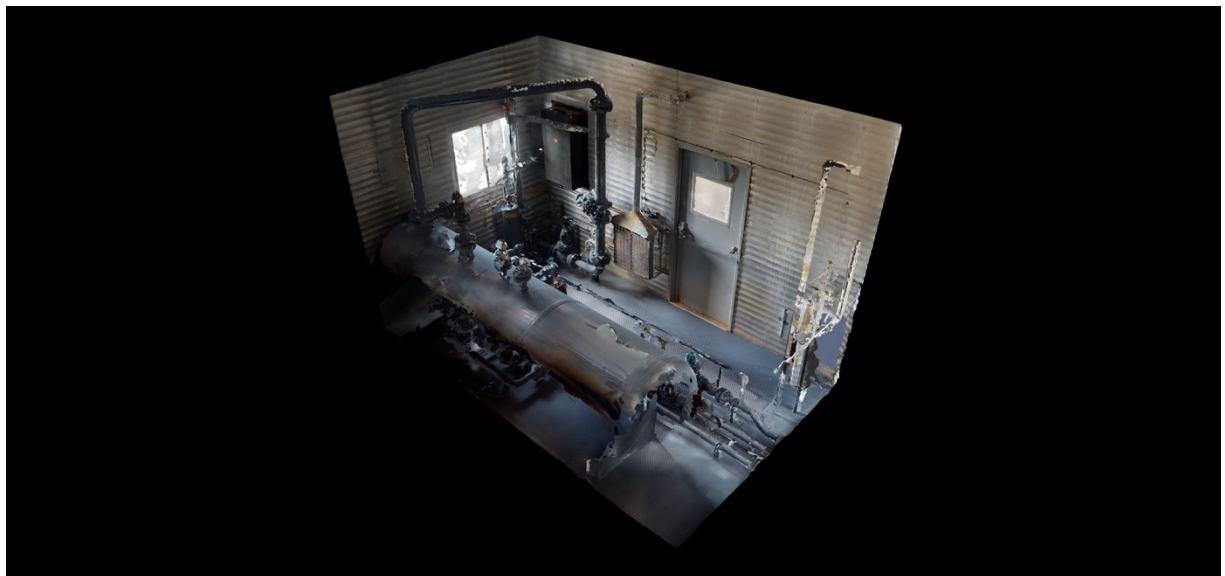












Take a 3D walkthrough at <https://bit.ly/2B34m6e>