



CJV#1850

60HP Sour Water Injection Pump Package



This 1500# rated 60HP pump package can be on site almost immediately and pumping water or oil for less than buying a new / custom unit. Built in 2018, it is fully equipped with 7.5hp charge pump, 3 bag filter (coated), VFD motors, internally coated 1500# piping, and a comprehensive electrical package that is fully wired to junction boxes. A full 12 month warranty is included along with full QA/documentation. Located in Three Hills, it is available for inspections and short notice delivery – pick your plungers and let's ship it!

CJV#1850

60HP Sour Water Injection Pump Package



Condition	New/Never Used
Manufactured	2018
Location	Three Hills, AB
Status	Disconnected
Availability	Immediate;
Service	Sour (Internally Coated)
Piping	3" 150# / 2" 1500#
Electrical	Fully wired
Dimensions	Skidded building is 18' L x 12' W
Warranty	c/w 12 month warranty



Take a 3D walkthrough at <https://bit.ly/3dOzP9g>

Pump & Accessories

MAIN PUMP, MOTOR AND EQUIPMENT

P-161 Triplex Pump:

- One (1) Reconditioned FMC M12 Triplex Pump
- c/w 12 Month Warranty
- Client choice of plungers
- Maximum Continuous RPM Rating: 500RPM
- 3" FNPT Suction, 2" FNPT Discharge Connections
- Rated for 62HP Continuous Duty
- 3 Feed Lubricator w/ Oil Reservoir
- Sheave Kit and Belt Guard
- Mounted on sub assembly skid and attached to main skid

Model	Plunger	Gal/Rev	Max PSI	Max kPa	100 RPM		200 RPM		300 RPM		400 RPM		450 RPM		500 RPM	
					m ³ /d	GPM	m ³ /d	GPM	m ³ /d	GPM	m ³ /d	GPM	m ³ /d	GPM	m ³ /d	GPM
M1208	1.0"	0.0306	7600	52400	16.9	3.1	33.3	6.1	50.1	9.2	66.5	12.2	75.2	13.8	83.4	15.3
M1210	1.25"	0.0478	4900	33784	26.2	4.8	52.3	9.6	77.9	14.3	104	19.1	117	21.5	130	23.9
M1214	1.75"	0.0937	2500	17237	51.2	9.4	102	18.7	153	28.1	204	37.5	230	42.2	256	46.9
M1216	2.0"	0.1224	1900	13100	66.5	12.2	134	24.5	200	36.7	267	49	300	55.1	334	61.2
M1218	2.25"	0.1549	1500	10342	84.5	15.5	169	31	253	46.5	338	62	380	69.7	422	77.5
M1220	2.5"	0.1912	1250	8618	104	19.1	208	38.2	313	57.4	417	76.5	469	86	521	95.6
M1222	2.75"	0.2314	1000	6895	126	23.1	252	46.3	378	69.4	505	92.6	567	104	632	116
M1224	3.0"	0.2754	850	5861	150	27.5	300	55.1	450	82.6	600	110	676	124	752	138
<i>Brake HP Required</i>					16		31		46		61		69		76	

M-161 Motor:

- One (1) NEW WEG or TECO 60HP Electric Motor
- TEFC; 1800RPM
- VFD Rated
- 600V/3/60VAC

PD-160 Suction Stabilizer:

- One (1) CoorsTek Suction Pulsation Stabilizers
- 300 cu/in
- 3" 150# RF

PD-161 Discharge Stabilizer:

- One (1) NEW CoorsTek Discharge Pulsation Stabilizer
- 300 cu/in
- 2" 1500# RF

P-160 Charge Pump:

- One (1) NEW Grundfos CRN 15-3 Centrifugal Pump
- All Wetted Parts Stainless Steel
- Rated at 120 gpm @ 50 psi

M-160 Charge Pump Motor:

- One (1) 5 HP WEG Motor
- TEFC, 1200 RPM
- 600V/3/60Hz

F-161 Filter Vessel:

- One (1) New P2 3 Bag Filter Vessel
- Internally Coated
- MAWP 150 PSI @ +300F/-20F
- 4" 150# RF in/out Connections
- Rated for 815m³/day
- AB/BC/SK CRN Registration
- Vessel has is new/never used so MB CRN should be easy to have added

Pump & Accessories

INSTRUMENTATION

PI-100	P-160 Discharge pressure indicator (0-150 psi)
DPI-100	F-161 Differential Pressure Indicator (0-30 Diff Pres)
PI-101	F-161 Filter discharge pressure Indicator (0-150 psi)
PSL-100	P-161 Low suction pressure Shutdown Switch Low (6900GZE14 SET FALLING TO 20 PSI)
PI-200	P-161 discharge pressure Indicator (0-3000 PSI)
PSH-200	P-161 High discharge pressure Shutdown Switch High (6900GZE22 SET TBA)
PSV-200	Pressure Safety Valve (SET RISING TO TBA)
FT-200	1 ½ x 2 EZ-IN (2" 1500# RF) Turbine Flow Meter
FQI-200	Flow Totalizer MCIII EX or Equal
VSH-200	P-161 High Vibration Switch
LSL-200	P-161 Low Oil Level Shutdown

PIPING

Suction Piping: 4" 150#

- Includes 4" Y strainer and Isolation valve
- 3" Filter vessel isolation valves and 3" bypass valve

Discharge Piping: 2" 900/1500

- Startup bypass valve manual
- Isolation valve
- Check valve
- PSV and startup bypass valves outlet go back to main pump suction
- Drain valves to drain sump

Piping Comments:

- **All piping internally coated with Devoe 253**
- Built to ASME B31.3 Latest Edition
- Discharge piping to be sch. 160
- Suction piping to be sch. 80
- Piping will include flanges for all connection
- All valves will include "Sour Trim"
- All piping will include PWHT
- All pipe/fittings/bolting/gasket materials to be standard

Drain Piping to be 1" and will drain into open drain sump from:

- Basket strainer drain
- F-161 Filter vessel drain
- Suction piping between P-160/P-161
- Discharge piping
- P-161 stuffing box drain

Pump & Accessories

SKID & BUILDING

- 12' x 18' Never Used skid/building.
- Checker Plate Flooring
- 2" Drip Lip Around Skid
- Drain Sump: High and Low Level Sump Switches, Manual ON/OFF switch; Filter, Suction and discharge piping, pump stuffing box area drain into sump
- Gable Style Building
- Ice Rakes
- Ridge Vent
- Eavestroughs and Downspouts
- One (1) Double Man Door
- One (1) Single Man Door
- 3" Fire Retardant Spray Foam Under skid Insulation Insulated Skid

ELECTRICAL

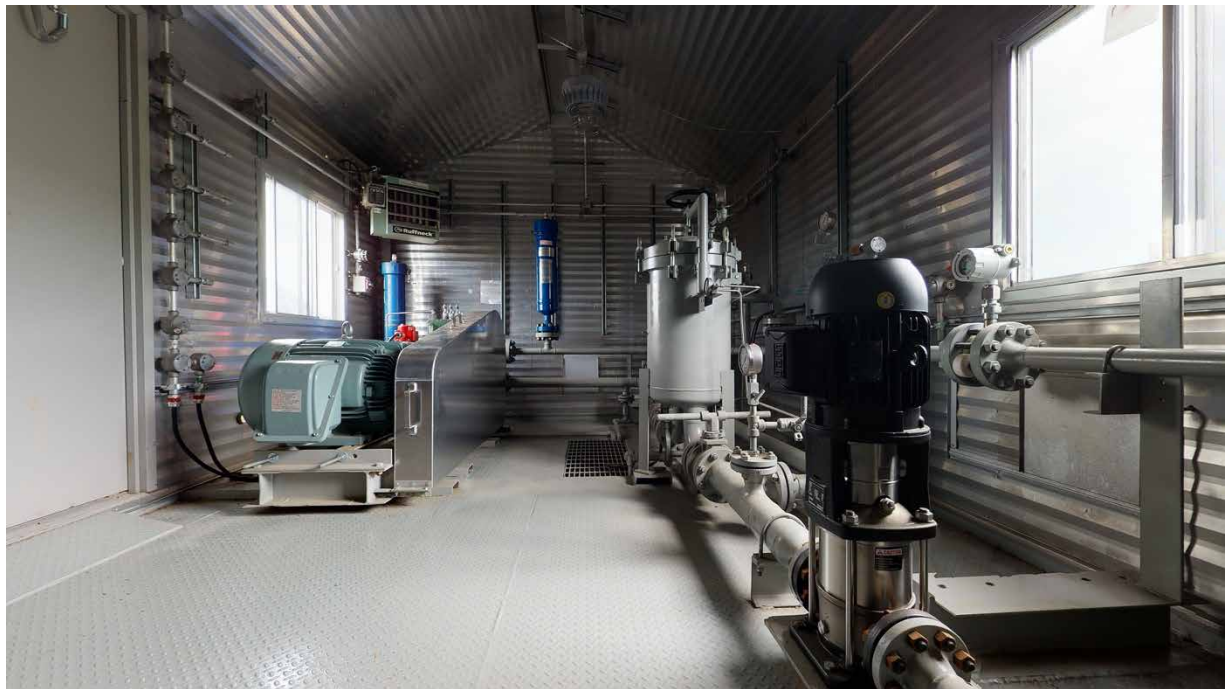
- Two (2) Interior Lights w/ Switch
- Two (2) Exterior Lights w/ Switch
- One (1) High Mount Exhaust Fan
- One (1) FX4 5KW Ruffneck Heater
- One (1) 12V Electrical Receptacle
- Two (2) ESD Buttons
- Wired to Junction Boxes

QA/QC DOCUMENTATION

Operation, Parts, Service and QA Manual provided with package c/w:

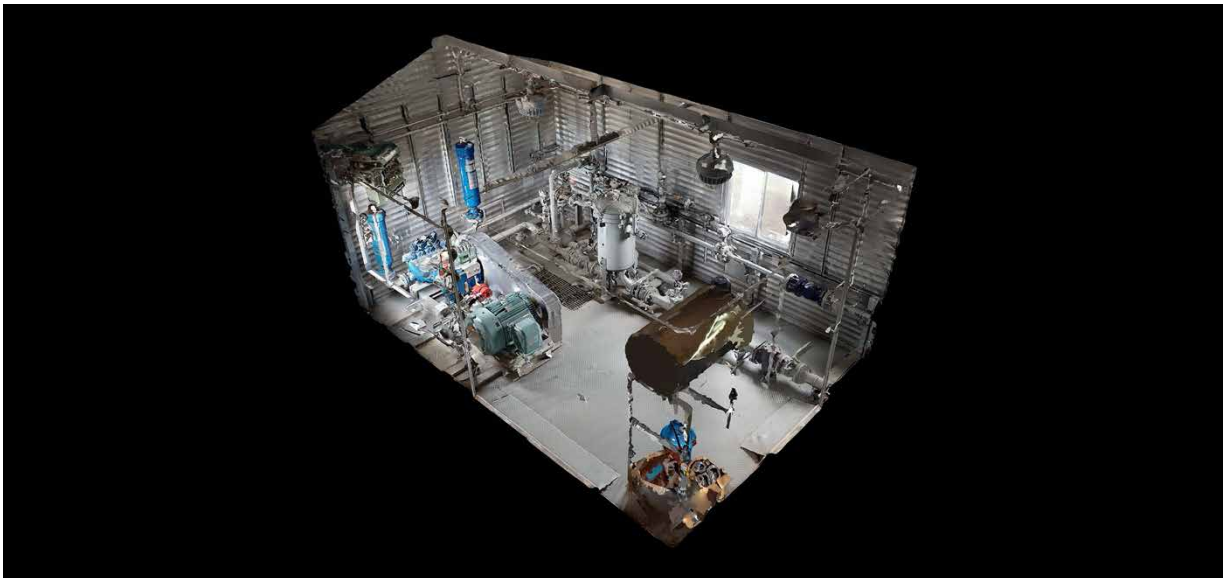
- P&ID Dwg's
- Pump Curves
- Installation and Operation manual
- Parts and service Manual for all equipment
- Data sheets for all equipment in package
- QC Manual from approved shop with AQP
- AB-83
- UIA for Filter vessel and Pulsation stabilizers
- P&ID
- Skid Sketch











Take a 3D walkthrough at <https://bit.ly/3dOzP9g>