



#1891

60" ID x 20' 720psi Sour Separator

FOR IMMEDIATE SALE



This separator is in great condition – built for sour and only ever used in sweet service. Commissioned in 2008, the vessel is currently setup for 2 phase service (water dump and panic dump), however all the connections and weir exist for it to have a 3rd phase added (1 week delivery and ~\$10,000). Full drawings, over 80 pictures, and more detailed information available upon request! Call us today!

FOR IMMEDIATE SALE

#1891

60" ID x 20' 720psi Sour Separator

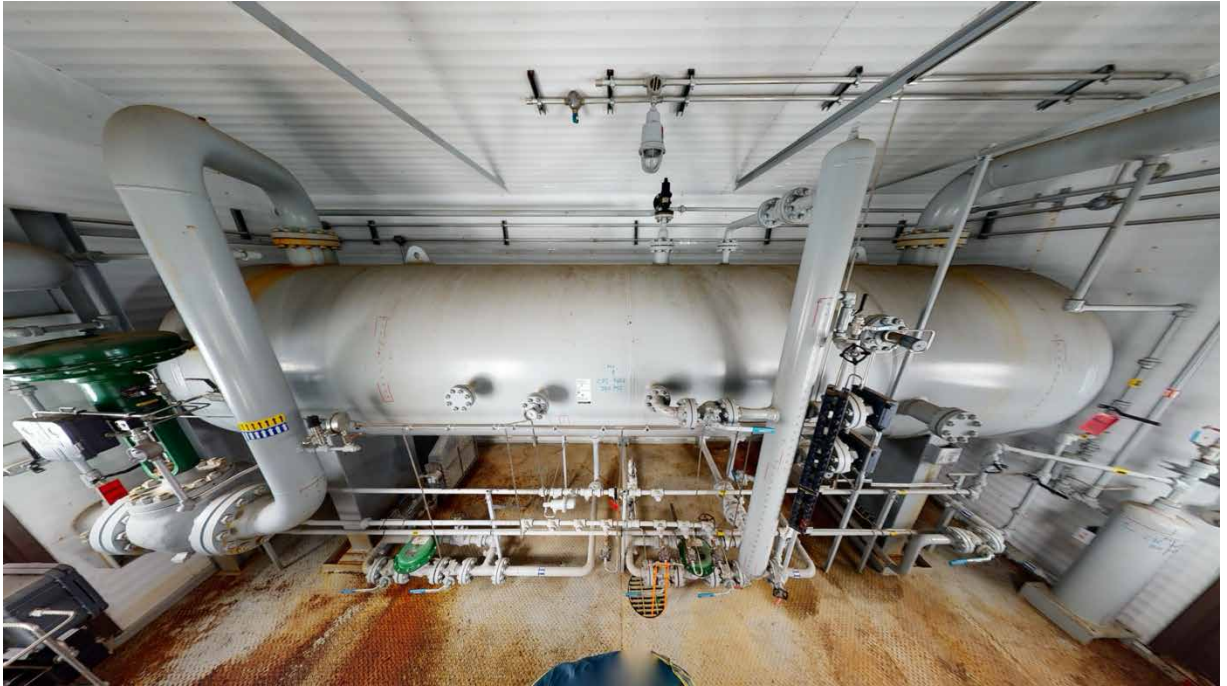


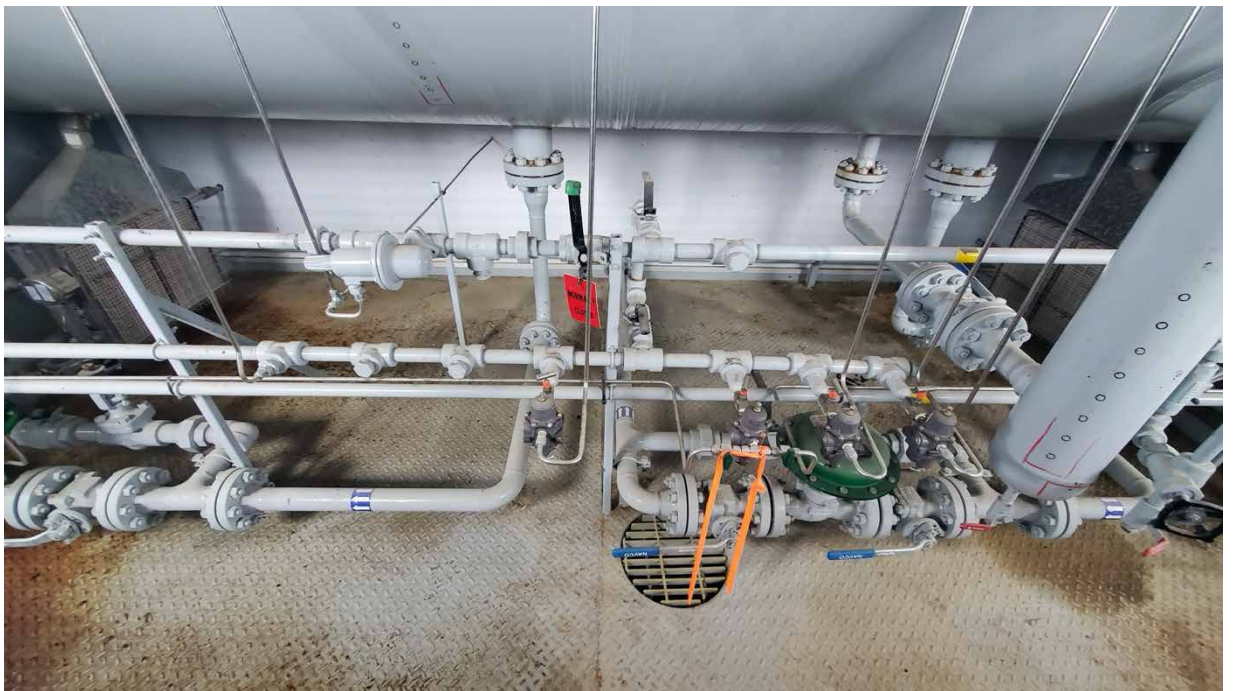
| | |
|----------------------------|--|
| Condition | Used |
| Manufactured | Paintearth 2007 |
| Location | Southern AB |
| Status | Connected; 1 week for disconnection |
| Registration | AB (BC/SK available) |
| Service | Sour |
| Phases | 3 Phase, Dressed 2 |
| Vessel Connections | 8" Inlet & Outlet; 3" Liquid & Oil Outlet; 3" PSV |
| Meter Run | No Meter; Spool piece and BPCV included |
| Instrumentation | 8" Fisher 600 ET Inlet Control Valve ; 8" Fisher 300# Actuated BPCV; SOR LSHH/LSLL, 2 x Mercer PSV's, |
| Electrical | 2 x ESD Button, LEL Detection, Interior Light wired to Junction Box |
| Building Dimensions | 12' width x 26' length x 13' height |
| Building | Two (2) Single Man Doors with Windows IWG; Two (2) 36" Windows w/ Screens; Two (2) 12" x 12" Adjustable Louvers; 3" Drip Lip around skid perimeter interior, Four (4) Catadyne Heaters w/ 12V start; Fuel Gas Scrubber, Floor drain piped to skid edge 2" connection |



Take a 3D walkthrough at <https://bit.ly/3dw7Jke>









Take a 3D walkthrough at <https://bit.ly/3dw7Jke>