

#1881

# 48" OD x 15' 1440psi Sour 3 Phase Horizontal Separator Package

CAUTION  
EXTEND CABLES  
25' BEFORE  
CONNECTING TO  
BATTERY

*FOR IMMEDIATE SALE*

#1881

## 48" OD x 15' Sour 1440psi Horizontal Separator Package



<b>Condition</b>	Field Ready / Reconditioned 2020
<b>Manufactured</b>	Larsen & D'Amico 2000
<b>Location</b>	Halkirk, AB
<b>Status</b>	Disconnected
<b>Registration</b>	AB/BC/SK
<b>Service</b>	Sour
<b>Phases</b>	3 Phase, dressed 3
<b>Vessel Connections</b>	6" 600# Inlet & Outlet, 3" 600# Water & HC dump connections.
<b>Meter Run</b>	6" 600# CanAlta Dual Chamber
<b>Instrumentation</b>	Norriseal 1001A Level controllers, CVS E Series pressure control valves, SOR electric level switch, ROSEMOUNT 3051 pressure transmitters.
<b>Electrical</b>	ESD button, 2 AC interior lights & 1 AC exterior light. Electrical & Instrumentation all wired to JB's.
<b>Building Dimensions</b>	11'- 0" Wide x 22'-0" Long, Shed Style Roof, Two (2) 3'-0" x 7'-0" Steel Doors, Check Chain, Panic-Hardware, Lock and Weather-Stripping, One (1) Window c/w Screen, Two (2) Louvers c/w Screen.
<b>Package Comments</b>	Fuel gas scrubber and 2) 12x24 Cata-Dyne heaters.



Take a 3D walkthrough at <https://bit.ly/2ViHtSS>

# Technical Description

## 1.0 VESSEL

<u>TAG #</u>	<u>QTY</u>	<u>DESCRIPTION</u>
V-100	1	<p><b>48" OD x 15'- 0" S/S x 1440 PSI MAWP HORIZONTAL VESSEL</b>            Manufactured in 2000 by Larsen &amp; D'Amico            Reconditioned in 2020 by CAPE Manufacturing            CRN: L7688.213            A#: 454495            "U" Stamped            1/8" Corrosion Allowance            100°F Design Temperature            M.D.M.T.-20°F @ 1440 Psig            RT-1            PWHT            Designed 3 Phase, Dressed 3 Phase</p>

### VESSEL CONNECTIONS:

N1	Inlet	1	6" NPS	CL600 RFWN
N2	Gas Outlet	1	6" NPS	CL600 RFLWN
N3	Water Outlet	1	3" NPS	CL600 RFHB
N4	Oil Outlet	1	3" NPS	CL600 RFHB
N5	Drain	1	2" NPS	CL600 RFWN
N6 a/b	Level Cage	2	2" NPS	CL600 RFWN
N7	PSV	1	2 1/2" NPS	CL600 RFHB
N8 a/b	Bridle	2	2" NPS	CL600 RFWN
N9	PI	1	1 1/2" NPS	CL600 RFWN
N10	TI	1	1 1/2" NPS	CL600 RFWN
M1	Manway	1	20" NPS	CL600 RFHB c/w blind & Davit arm

## 2.0 INSTRUMENTATION

<u>TAG #</u>	<u>QTY</u>	<u>DESCRIPTION</u>
LC-1001/2	2	<p><b>NORRISEAL 1001A LEVEL CONTROLLERS</b>            Model# 1001A            2" NPT, Sour Service            L.H. or R.H. Mount, Direct            Snap Acting            C/w 1-7/8" x 12" PVC Displacer</p>
LCV-1001/02 <b>(Reconditioned)</b>	2	<p><b>CVS E SERIES PRESSURE CONTROL VALVES</b>            2" CL600 RF, LCC Body            316 SST Trim            657/667-40 or 45 Actuator, Fail Open or Closed            Low Temp, STD as Nace Service</p>

LG-1001	1	<p><b>PENBERTHY OR EQUAL LEVEL GAUGE</b>  V.L. 7-7/8"  ITM5 Transparent  3/4" NPT, 1750 Psi @ 100°F</p>
\ LG-1002	1	<p><b>PENBERTHY OR EQUAL LEVEL GAUGE</b>  V.L. 10-1/4"  IRM7 Reflex  3/4" NPT, 2440 Psi @ 100°F</p>
FE-1000 <b>(Reconditioned)</b>	1	<p><b>CANALTA OR EQUAL SENIOR METER RUN</b>  6" CL600 RF, Sch. 80, Nace Service Trim  Built to AGA 2000 SPEC  One (1) 1" CL3000 TOL and One (1) 3/4" CL3000 TOL Downstream  1 1/2 Hour Hydro Test, 100% X-Ray, PWHT, 118" OAL  C/w CPA 50E Flanged Type Flow Conditioner</p>
FR/PR-1000	1	<p><b>BARTON MODEL 202E, 2 PEN FLOW RECORDER</b>  5 Valve Manifold</p>
BPCV-1000 <b>(Reconditioned)</b>	1	<p><b>CVS E SERIES PRESSURE CONTROL VALVE</b>  4" CL600 RF, LCC Body  316 SST trim  657/667-45 Actuator, Fail Open or Closed  STD as Nace Service</p>
PSV-1000	1	<p><b>FARRIS PRESSURE RELIEF VALVE</b>  Model 2600  2-1/2" CL600 Inlet x 4" CL150 Outlet  Nace Service Trim, WCB Body  "J" Orifice.</p>
LSHH-1000	1	<p><b>SOR ELECTRIC LEVEL SWITCH</b>  Model 1510B  2" NPT  316SST Construction  Snap Acting</p>
PIT-1000	1	<p><b>ROSEMOUNT 3051 PRESSURE TRANSMITTER</b>  Model# 30541TG5A2B21AC6TR  0 to 1000 Psig</p>
PIT-1001	1	<p><b>ROSEMOUNT 3051 PRESSURE TRANSMITTER</b>  Model# 30541TG4A2B21AC6  0 to 4000 Psig</p>
PI-1001	1	<p><b>WGI OR EQUAL PRESSURE GAUGE</b>  Silicone Filled  4" dia. Face x 1/2" NPT Bottom Mount End Connection  SS Case and Internals  0 to 1,500 Psi Dual Scale</p>

TI-1000	1	<b>TREND OR EQUAL TEMPERATURE GAUGE</b>
TW-1000		1/2" NPT Back Connection 3" Dial, 9" Stem -40 to 240°F Range - Dual Scale C/w 1/2" FNPT x 3/4" MNPT x 9.25" OAL, 7.5" U, 316 SST Thermowell

#### 4.0 SKID & BUILDING SPECIFICATIONS

<u>TAG #</u>	<u>QTY</u>	<u>DESCRIPTION</u>
SK-100	1	<b>SKID BASE, 11'- 0" W X 22' L</b> 3/16" Checker Plate Two (2) End Rolls, 2" Containment
B-100	1	<b>SELF FRAMING BUILDING</b> 11'- 0" Wide x 22'-0" Long Shed Style Roof Two (2) 3'-0" x 7'-0" Steel Doors, Check Chain, Panic-Hardware, Lock and Weather-Stripping One (1) Window c/w Screen Two (2) Louvers c/w Screen
BH- 1080/82/84	3	<b>CATADYNE 12" x 24" MK BUILDING HEATERS</b> Sweet Natural Gas 12 VDC Starting Element with 30' Cables C/w Grill, Vent Hood, Safety Shutoff, 912 Regulator, Maxitrol Regulator and Thermostat

#### 5.0 FUEL GAS SYSTEM

<u>TAG #</u>	<u>QTY</u>	<u>DESCRIPTION</u>
PI-1010	1	<b>WGI OR EQUAL PRESSURE GAUGE</b> Silicone Filled 4" dia. Face x 1/2" NPT Bottom Mount End Connection SS Case and Internals 0 to 200 Psi Dual Scale
PRV-1000	1	<b>CVS OR EQUAL PRESSURE REGULATOR</b> 1/4" FNPT Connections Sweet Service Trim 250 Psig MAWP 5 to 35 Spring Range
PRV-1001/2	2	<b>BELLOFRAM OR EQUAL PRESSURE REGULATORS</b> 1/4" FNPT Connections Sweet Service Trim 250 Psig MAWP 0 to 30 Spring Range

#### 6.0 ELECTRICAL SYSTEM

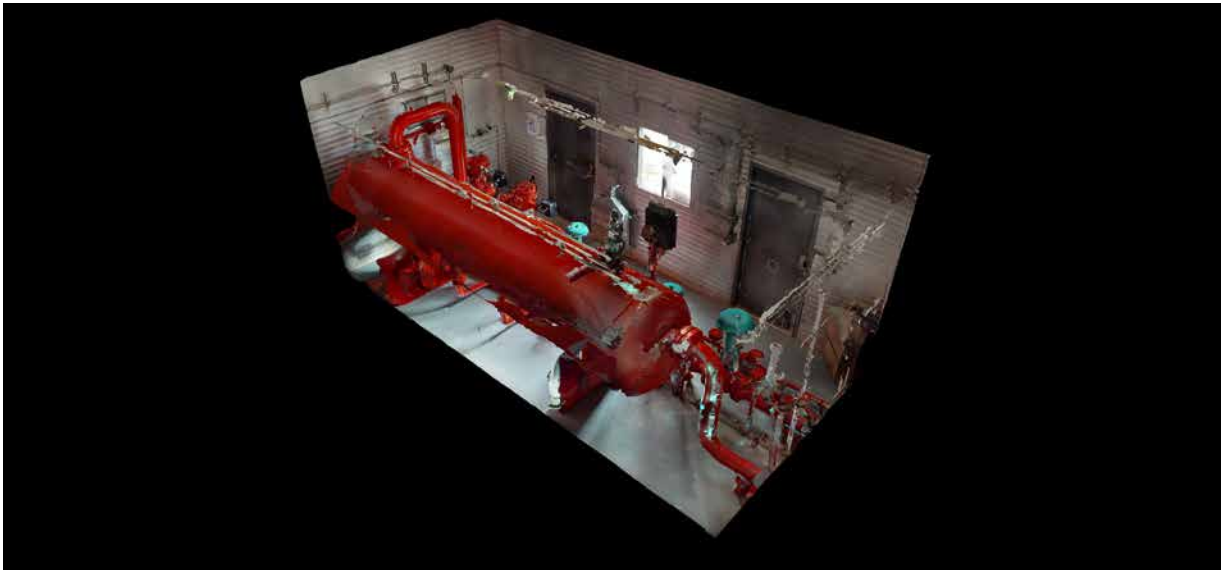
Other electrical equipment is supplied and installed by others.











Take a 3D walkthrough at <https://bit.ly/2ViHtSS>