



#1880

**36" OD x 12' Sour
1440psi 3 Phase
Horizontal Separator
Package**

FOR IMMEDIATE SALE

#1880

36" OD x 12' Sour 1440psi 3 Phase Horizontal Separator Package



Condition	Field Ready / Reconditioned 2020
Vessel	Bromley Mechanical Services 2008 in Argo package
Location	Halkirk, AB
Status	Disconnected
Registration	AB/BC/SK
Service	Sour
Phases	3 Phase, dressed 3
Vessel Connections	4" 600# inlet/outlet, 2" 600# dump & drain connections.
Meter Run	4" 600# dual chamber
Instrumentation	ROC (Scada) system by Spartan.
Electrical	Solar panel, Scada antenna & mounting posts.
Building Dimensions	10' x 16' on a 10' x 19' skid
Package Comments	2) 24" x 24" Cata-Dyne heaters, Feb/20 UT inspection on file, drawings on file and available on request.



Take a 3D walkthrough at <https://bit.ly/2B34m6e>

Technical Description

1.0 VESSEL

<u>TAG #</u>	<u>QTY</u>	<u>DESCRIPTION</u>
V-100	1	<p>36" OD x 12'- 0" S/S x 1440 PSI MAWP HORIZONTAL VESSEL Manufactured in 2008 by Bromley Mechanical Services Inc. Reconditioned in 2020 by CAPE Manufacturing CRN: U5080.21 A#: 589926 "U" Stamped 1/8" Corrosion Allowance 130°F Design Temperature M.D.M.T.-20°F @ 1440 Psig RT-1 PWHT</p>

Designed 3 Phase, Dressed 3 Phase

VESSEL CONNECTIONS:

N1	Inlet	1	-	4" NPS	CL600 RFLWN
N2	Gas Outlet	1	-	4" NPS	CL600 RFLWN
N3	Water Drain	1	-	2" NPS	CL600 RFWN
N4	Water Out	1	-	2" NPS	CL600 RFWN
N5	Water LLC	1	-	3" NPS	CL600 RFLWN
N6	PSV	1	-	3" NPS	CL600 RFLWN
N7	Oil LLC	1	-	3" NPS	CL600 RFLWN
N8	Oil Out	1	-	2" NPS	CL600 RFWN
N9	LDSH	1	-	3" NPS	CL600 RFLWN
N10 a/b	Water LLG	2	-	2" NPS	CL600 RFWN
N11 a/b	Oil LLG	2	-	2" NPS	CL600 RFWN
N12	TI	1	-	2" NPS	CL600 RFWN
N13	PI	1	-	2" NPS	CL600 RFWN
M1	Manway	1	-	18" NPS	CL600 RFHB c/w
	blind & Davit arm				

2.0 INSTRUMENTATION

<u>TAG #</u>	<u>QTY</u>	<u>DESCRIPTION</u>
LC-1001/2	2	<p>NORRISEAL 1001A LEVEL CONTROLLERS Model# 1001A 2" NPT, Sour Service L.H. or R.H. Mount, Direct Snap Acting C/w 1-7/8" x 12" PVC Displacer</p>

LCV-1001	1	<p>NORRISEAL LIQUID CONTROL VALVE Model # 2220 2" CL600 RF Process Connection, LCC Body 3/8" SST Trim, LCC Body Fail Closed Standard Sour Service</p>
LCV-1002	1	<p>NORRISEAL LIQUID CONTROL VALVE Model # 2220 2" CL600 RF Process Connection, LCC Body 3/4" SST Trim, LCC Body Fail Closed Standard Sour Service</p>
LG-1001	1	<p>QUALITY OR EQUAL LEVEL GAUGE Q5T20 Transparent 1/2" NPT, 1500 Psi @ 100°F Visual Length 7 7/8", Nace Service C/w Model 330J Gauge Valves, 3/4" x 1/2" NPT</p>
LG-1002	1	<p>QUALITY OR EQUAL LEVEL GAUGE Q6R20 Reflex 1/2" NPT, 2375 Psi @ 100°F Visual Length 9 1/8", Nace Service C/w Model Q146 Gauge Valves, 3/4" x 1/2" NPT</p>
FM-1002 FQIT-1002	1	<p>PRIMARY FLO TURBINE METER 2" CL600 Process Connections 1/2" Metering 0.75 - 7.5 GPM Capacity C/w Magnetic Pickup C/w NUFLO TOTALIZER MC-III Flow Analyzer Explosion Proof, 4-20mA Output</p>
FE-1000 (Reconditioned)	1	<p>DANIELS OR EQUAL SENIOR METER RUN 4" CL600 RF, Sch. 80, Nace Service Trim Built to AGA 2000 SPEC One (1) 1" CL3000 TOL and One (1) 3/4" CL3000 TOL Downstream 1 1/2 Hour Hydro Test, 100% X-Ray, PWHT, 85" OAL C/w Pin Style Conditioner</p>
BPCV-1000	1	<p>MANUAL GLOBE BACK PRESSURE CONTROL VALVE 3" CL600 RF Globe Valve, Nace Service</p>
PSV-1000	1	<p>TAYLOR OR EQUAL PRESSURE RELIEF VALVE Model 8200 2" CL600 Inlet x 3" CL150 Outlet Nace Service Trim, WCB Body "G" Orifice, 1253 Psig Set Pressure</p>

PH-1001	1	WGI OR EQUAL PRESSURE GAUGE Silicone Filled 4" dia. Face x 1/2" NPT Bottom Mount End Connection SS Case and Internals 0 to 1,500 Psi Dual Scale
TI-1001 TW-1001	1	MASTER-TEMP 300 OR EQUAL TEMPERATURE GAUGE 1/2" NPT Back Connection 3" Dial, 9" Stem -40 to 160°F Range - Dual Scale C/w 1/2" FNPT x 3/4" MNPT x 9.25" OAL, 7.5" U, 316 SST Thermowell

3.0 SKID & BUILDING SPECIFICATIONS

<u>TAG #</u>	<u>QTY</u>	<u>DESCRIPTION</u>
SK-100	1	SKID BASE, 10'-0" W X 18'-6" L Checker Plate Two (2) End Rolls
B-100	1	SELF FRAMER BUILDING 10'-0" Wide x 16'-0" Long Shed Style Roof One (1) 3'-0" x 7'-0" Foam Panel Door, Window, Check Chain, Panic-Hardware, Lock, and Weather-Stripping Two (2) Sliding Window c/w Screen Two (2) Louvers c/w Screen
BH-1080/82	2	CATADYNE 24" x 24" MK BUILDING HEATERS Sweet Natural Gas 12 VDC Starting Element with 30' Cables C/w Grill, Vent Hood, Safety Shutoff, 912 Regulator, Maxitrol Regulator and Thermostat

4.0 MANUAL VALVES

<u>QTY</u>	<u>DESCRIPTION</u>
6	2" CL600 RF RP, Ball Valves, Nace Service
5	1" CL3000 NPT RP, Ball Valves, Nace Service
4	3/4" CL3000 NPT RP, Ball Valves, Nace Service
4	1/2" CL3000 NPT RP, Ball Valves, Nace Service
5	1/2" CL6000 NPT, Needle Valves, SS
1	2" CL600 RF, Y Strainer, Nace Service

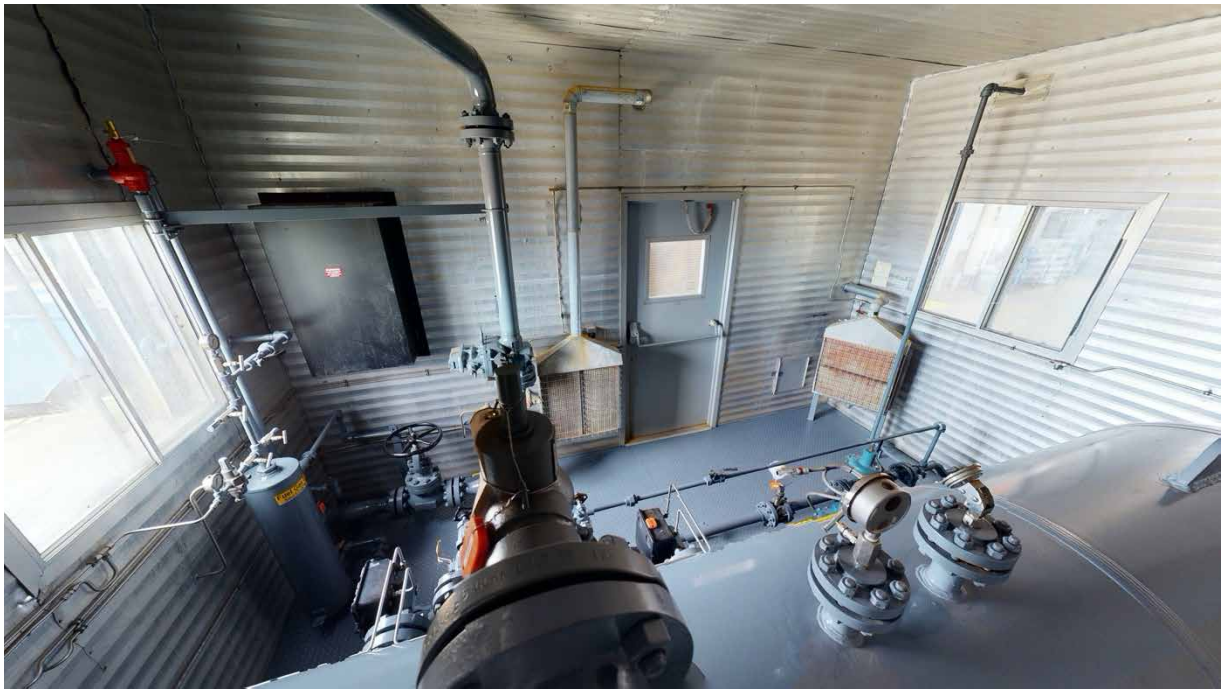
5.0 FUEL GAS SYSTEM

<u>TAG #</u>	<u>QTY</u>	<u>DESCRIPTION</u>
V-1010	1	8" OD X 36" OAL 150 PSI MAWP FUEL GAS SCRUBBER Mechanical HLSD (Reduces Outlet to 1" NPT) 1/16" Corrosion Allowance -20/200°F Design Temperature Registered in Alberta, BC, Sask.
PRV-1010	1	FISHER 627 PRESSURE REGULATOR 1" NPT, Body Material: WCC Steel Spring Case Material: Aluminum 1/8" Orifice Aluminum Nylon Disk Spring Range 70-150 Psi Maximum Inlet Pressure: 2000 Psi
PSV-1010	1	TAYLOR OR EQUAL PRESSURE RELIEF VALVE Model 8250 1" MNPT Inlet x 1" FNPT Outlet Nace Service Trim, WCB Body "E" Orifice, 150 Psig Set Pressure
PI-1000/10	2	WGI OR EQUAL PRESSURE GAUGES Silicone Filled 2-1/2" dia. Face x 1/4" NPT Bottom Mount End Connection SS Case and Internals One (1) 0 to 60 Psi Dual Scale One (1) 0 to 200 Psi Dual Scale
PRV-1000	1	FISHER OR EQUAL 67CFR INSTRUMENT REGULATOR 1/4" FNPT Connections Sweet Service Trim 250 Psig MAWP 0 to 35 Spring Range

6.0 ELECTRICAL SYSTEM

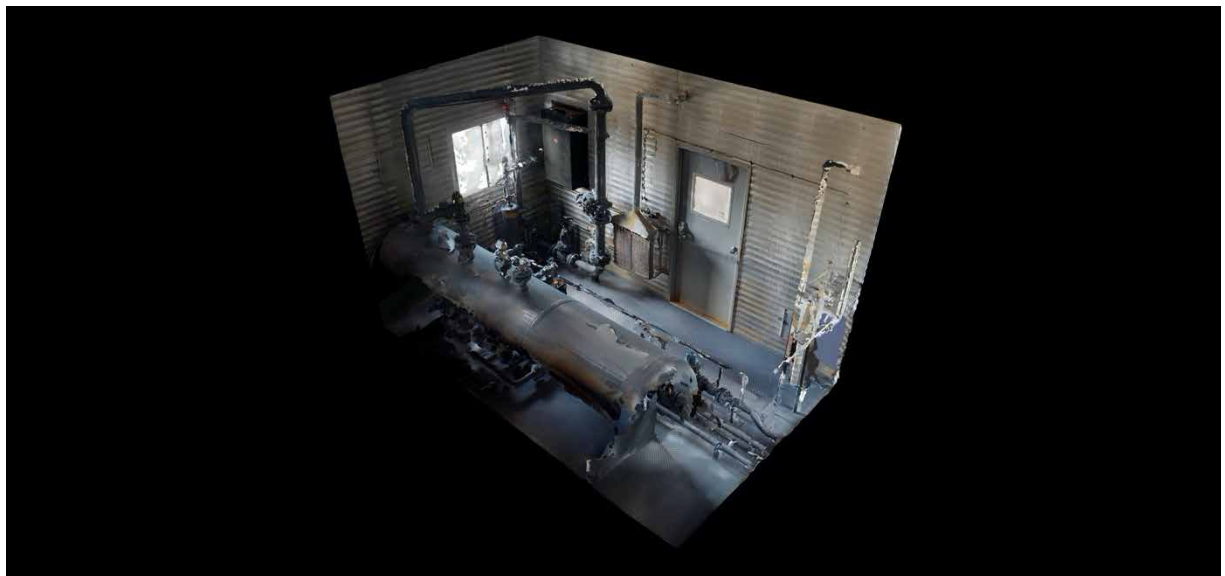
Electrical equipment is supplied and installed by others.











Take a 3D walkthrough at <https://bit.ly/2B34m6e>