



1825_26_27 – Gas Compression

400 HP Reciprocating Compressor

FOR IMMEDIATE SALE



There are three of these units available that are functionally & basically the same, built by Enerflex. Two were built in 2010 & one was in 2012. They were originally built to compress air into an underground formation. They all have Waukesha F18GL LCR drivers and Ariel JGJ/2 compressors. Process can be operated either as a single or a two stage compressor. Control is handled with an Allen-Bradley HMI. All CRN's in this unit are .213 and the vessels/bottles are fully flanged.

FOR IMMEDIATE SALE

#1825_26_27 – Gas Compression 400 HP Reciprocating Compressor



Condition	Field Ready &/or Minor Repair
Manufactured	Enerflex 2010/2012 (3 available)
Location	Wabasca, AB
Registration	AB/BC/SK
Status / Availability	Disconnected / Immediate
Service	Sweet
Driver / Driven	400HP Waukesha F18GL LCR drivers / Ariel JGJ/2
Stages	1 or 2
Cylinders & MAWP	7 ³ / ₈ " @ 845psi; 6" @ 1270psi
Package MAWP	1287psi
Control panel	PLC Allen-Bradley
Cooler Manufacturer	AXH 96AEF



Take a 3D walkthrough at <https://bit.ly/32vTztu>

Sample Performance

For information only, subject to engineering review.

AS CONFIGURED 2 STAGE

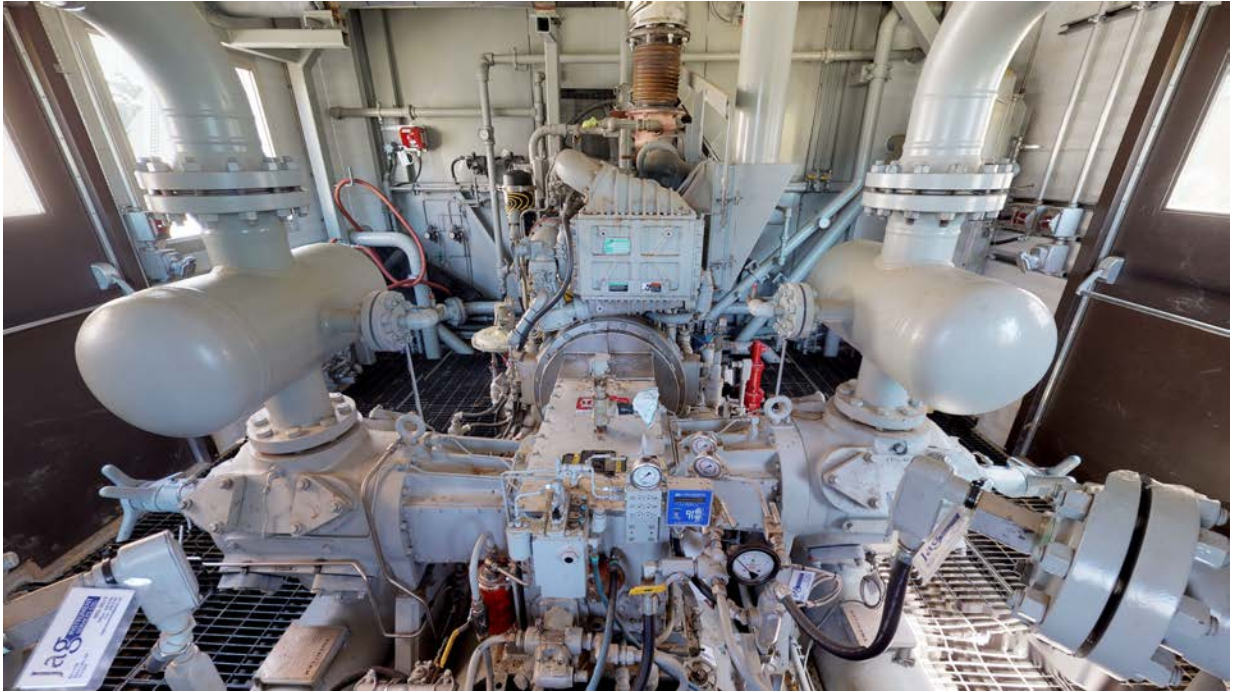
Suction Pressure: 150psi	Discharge Pressure: 1000psi	3.2MMSCFD @ 374 HP
Suction Pressure: 185psi	Discharge Pressure: 750psi	4.3MMSCFD @ 374 HP
Suction Pressure: 90psi	Discharge Pressure: 700psi	2.0MMSCFD @ 255 HP

OPTIONAL SINGLE STAGE

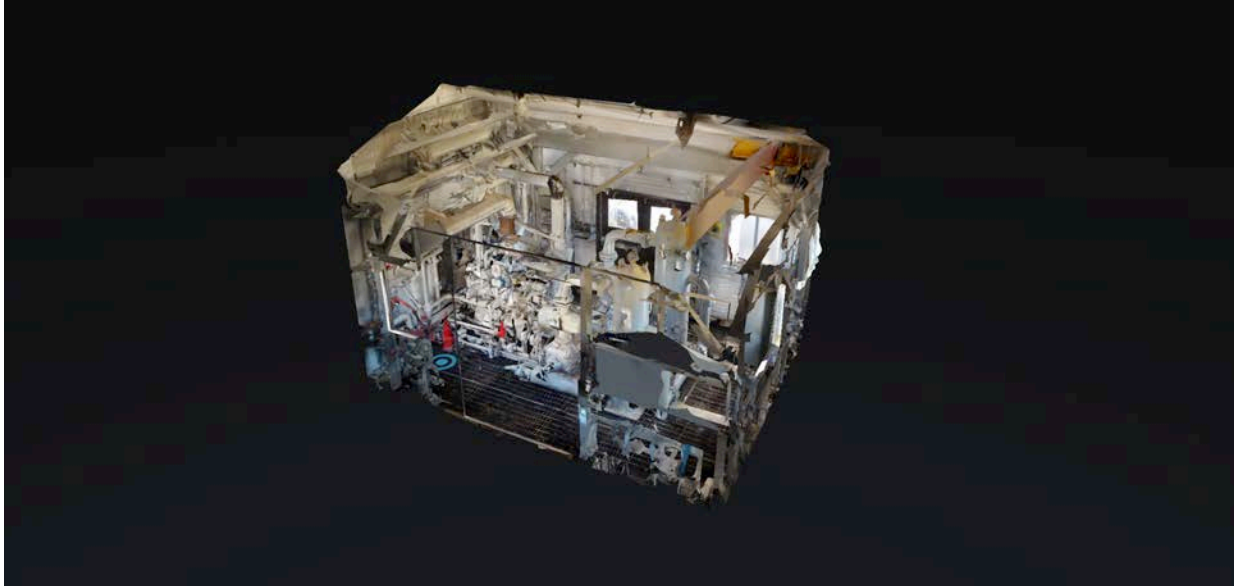
Suction Pressure: 185psi	Discharge Pressure: 650psi	4.9MMSCFD @ 363 HP
--------------------------	----------------------------	--------------------











Take a 3D walkthrough at <https://bit.ly/32vTztu>