



#1838 – Separators

# Sour 48' x 16', 1440psi Separator

FOR IMMEDIATE SALE



This separator/blowcase package is sitting near Red Deer and available for immediate redeployment at an unbeatable price. This separator was out on rent for about 6 months and still shows as new. Built to TransCanada spec, it has a lot great features such as WKM valves and first class instrumentation package. The building is fully wired to JB's including lights, gas detection, exhaust fans, and heaters. Of course, you may not need the blowcase, and would like it dressed 3 phase OR for a more traditional configuration. All modifications required or desired, can be handled right on site by a first rate fabricator.

*FOR IMMEDIATE SALE*



## #1838 – Separators

# Sour 48” x 16’, 1440psi Separator



<b>Condition</b>	New/Never Used
<b>Manufactured</b>	Vessel; Paintearth 2010
<b>Location</b>	Red Deer, AB
<b>Registration</b>	AB/BC/SK
<b>Status</b>	Disconnected
<b>Availability</b>	Immediate
<b>Service</b>	Sour
<b>Dimensions</b>	Building is 20' L x 12' W x 12'5" H



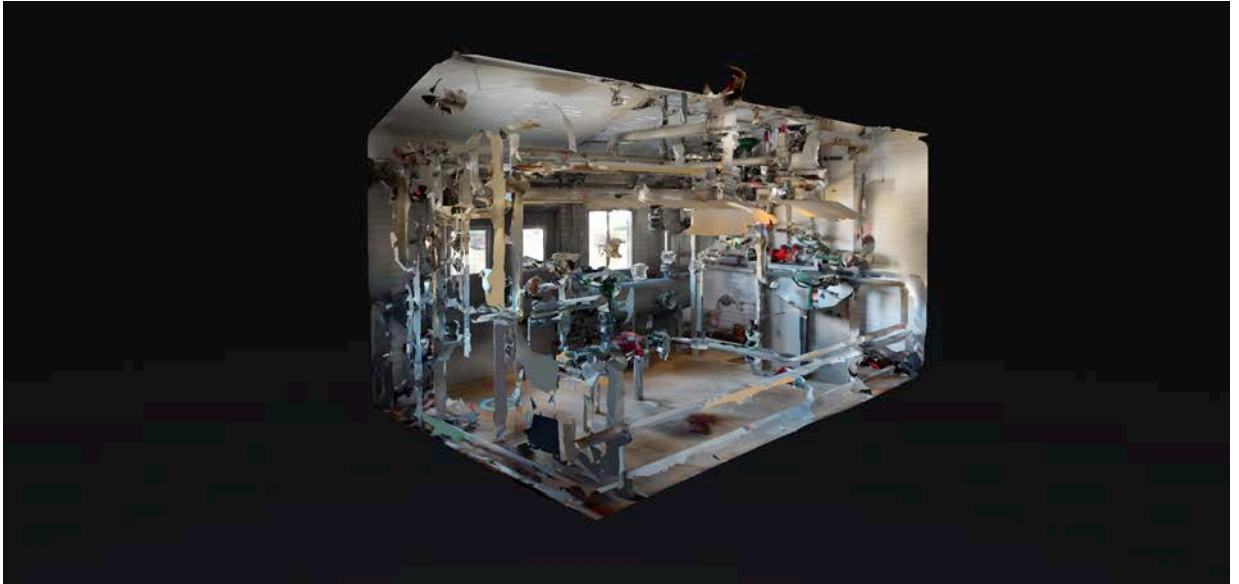
Take a 3D walkthrough at <https://bit.ly/2OGAUXY>











Take a 3D walkthrough at <https://bit.ly/2OGAUXY>