



#1851

# 200HP Sour Water Injection Pump Package

FOR IMMEDIATE SALE



A truly fully loaded pump package and MCC building; this unit ran for just under a year (Red Earth) before the formation failed and it was moved off site. Designed for 1500# and full sour operation, the W130M Triplex pumps have full duplex stainless fluid ends and all piping and valves are internally coated. On the discharge side, a lot of the control valves, transmitters etc. were removed when it arrived, however all missing parts have now been replaced with new. On the suction side, the filters and charge pumps were removed, which is good because now there is a dance floor size spot where we can outfit the suction end exactly how you require. A generous electrical wiring package is also included with everything wired to JB's and the "as new" MCC building.

*FOR IMMEDIATE SALE*

#1851

# 200HP Sour Water Injection Pump Package



<b>Condition</b>	Used – 1 Year
<b>Manufactured</b>	2013 by Candyne Pump
<b>Location</b>	CAPE Manufacturing - Halkirk, AB
<b>Availability</b>	Immediate
<b>Service</b>	Sour (Internally Coated)
<b>Piping</b>	6"/3" 150# - 3" 1500#
<b>Electrical</b>	Fully wired to JB's – MCC Building c/w dual VFD's
<b>Dimensions</b>	Skidded building is 17'W x 39' L
<b>Warranty</b>	12 months included



Take a 3D walkthrough at <https://bit.ly/30R3ji0>

# Pump & Accessories

## MAIN PUMP, MOTOR AND EQUIPMENT

### Triplex Pumps:

- Two (2) Weatherford W130M Triplex Pumps
- Duplex Stainless Fluid Ends
- Client choice of plungers
- Maximum Continuous RPM Rating: 450RPM
- 3" RJ Suction, 1.5" FF Discharge Connections
- Rated for 130HP Continuous Duty
- Sheave Kit and V-Belt Drive
- Aluminum Belt Guards
- 3 Feed Lubricators w/ 55 Gal Oil Reservoir
- Suction & Discharge 600cu In Stabilizers
- Mounted on sub assemblies and attached to main skid

### Pump Notes:

- Pumps are in excellent condition as verified by our own internal inspection and our commitment to a 12 month warranty. The internal inspection is available for review by interested parties.
- The package ran for just under one year prior to shutdown

Model	Plunger	Gal/Rev	Max PSI	Max kPa	150 RPM		250 RPM		300 RPM		350 RPM		400 RPM		450 RPM	
					m <sup>3</sup> /d	GPM	m <sup>3</sup> /d	GPM	m <sup>3</sup> /d	GPM	m <sup>3</sup> /d	GPM	m <sup>3</sup> /d	GPM	m <sup>3</sup> /d	GPM
Weatherford W130M	1.875"	0.1434	3110	21443	117	215	195	35.9	235	43	274	50.2	313	57.4	352	64.5
	2.0"	0.1632	2730	18823	133	245	222	40.8	267	49	311	57.1	356	65.3	400	73.4
	2.125"	0.1842	2420	16685	151	276	251	46.1	301	55.3	351	64.5	402	73.7	452	82.9
	2.25"	0.2065	2160	14893	169	31	281	51.6	338	62	394	72.3	450	82.6	507	92.9
	2.375"	0.2301	1940	13376	188	34.5	314	57.5	376	69	439	80.5	502	92	564	104
<i>Brake HP Required</i>					<i>44</i>	<i>72</i>	<i>87</i>	<i>101</i>	<i>116</i>	<i>130</i>						

### Triplex Pump Motors:

- Two (2) TECO Westinghouse 100 HP Electric Motors
- TEFC; 1200RPM
- VFD Rated, Constant torque
- 480/3/60VAC

# Current Instrumentation & Piping

## INSTRUMENTATION

PI-1110/1210	Discharge pressure Indicator (0-3000 PSI)
PIT-1100/1200	Rosemount 3051 Discharge Transmitters
FQIT/FE-1000	1 ½ x 2 EZ-IN (2" 1500# RF) Turbine Flow Meter w/ MC-III Analyzer
VSH-1100/1200	High Vibration Switch
LSL-1100/1200	Murphy EX Low Oil Level Shutdown
LSH	Sealed Sump Level Switch
PDIT	Rosemount 3051 Filter Differential Transmitter

Suction Instrumentation will be selected once customer decides configuration of filters/charge pump etc. or it can be taken to site and completed there.

## PIPING

### Suction Piping:

- 6" 150# Suction Inlet
- Remainder for Suction Piping 3" & 6" to Each Pump
- 3" Spools for Stabilizer Mounting
- Internally Coated

### Drain Piping

- All process piping drains go to sealed sump via threaded drain piping
- Filter drain piping currently in place (absent of filters)
- Pump stuffing boxes drain into open Sump

### Discharge Piping:

- Each individual discharge line exits the plunger pump into a 2" 1500 ANSI rated line. The discharge stabilizers are located directly after the plunger pump discharge.
- The PSV and automated startup bypass valve are located before the discharge header. There will also be a block and check valve prior to connecting to the discharge header from each pump individual discharge line, to prevent back flow possibilities.
- After the two discharge lines connect, there is the meter run with an uninterrupted 10 x upstream / 5 x downstream flow criteria.
- After the meter run, the flow flows through a 3" check and a ball valve, before leaving to skid edge.
- PSV and start-up bypass piping go back to main pump suction
- Drain valves to drain sump
- Internally Coated
- All supports are mounted on structural skid members
- All supports are secured by clamp style tie-downs
- Floating Full Port Block Valves on the system to ensure adequate flow rating of the line/system.

# Building and Electrical

## SKID

- 17' W x 39' L Skid and Building
- ¼" Checker Plate Flooring
- 2" Drip Lip Around Skid
- Two (2) Open Sumps /
- One (1) Sealed Sump w/ 2" Vented Outside
- Sump: High Level Sump Switch

## BUILDING

- Gable Style Building
- Ice Rakes
- Four (4) 12" x 18" Louvers w/ closers
- One (1) Double Man Door
- One (1) Single Man Door
- 3" Fire Retardant Spray Foam Under skid  
Insulation Insulated Skid

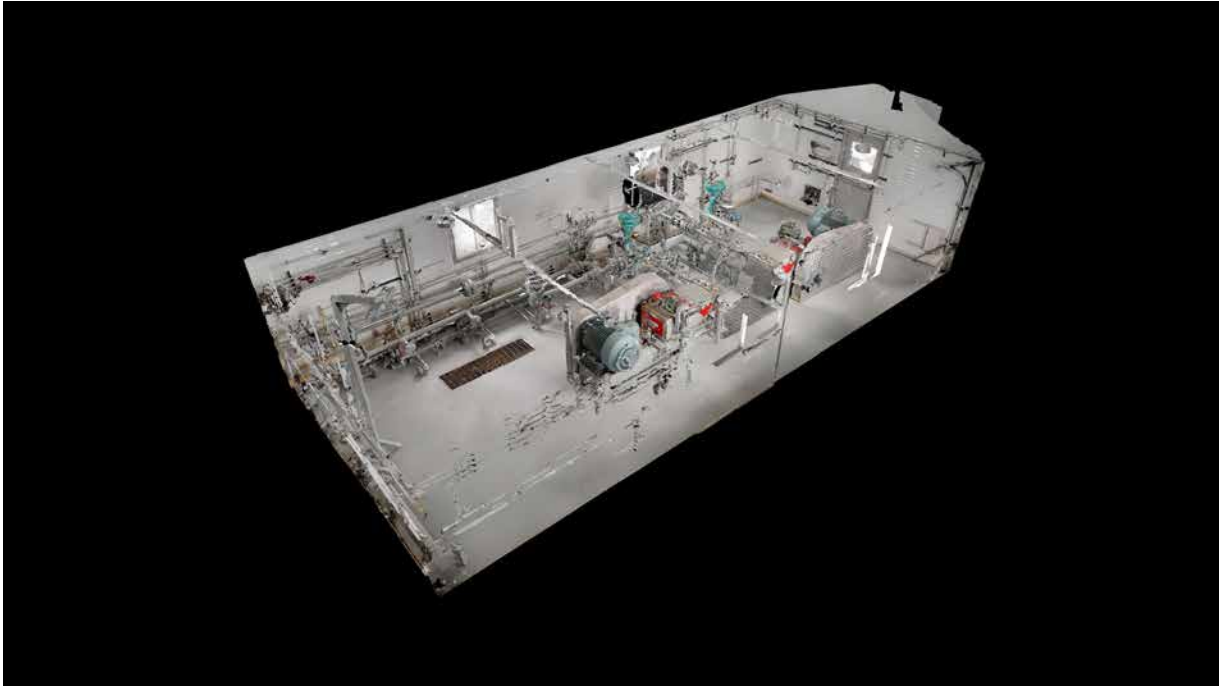
## ELECTRICAL

- Six (6) Interior Lights w/ Switches
- Two (2) Exterior Lights w/ Switches
- One (1) High Mount Exhaust Fan w/ switch
- One (1) Low Mount Exhaust Fan w/ switch
- LEL and H2S Gas Detection
- One (1) 120V Electrical Receptacle
- Two (2) ESD Buttons
- Two (2) Hazlok XP heaters w/ thermostats

All electrical has been tested and replaced as required. New junction boxes have been installed.

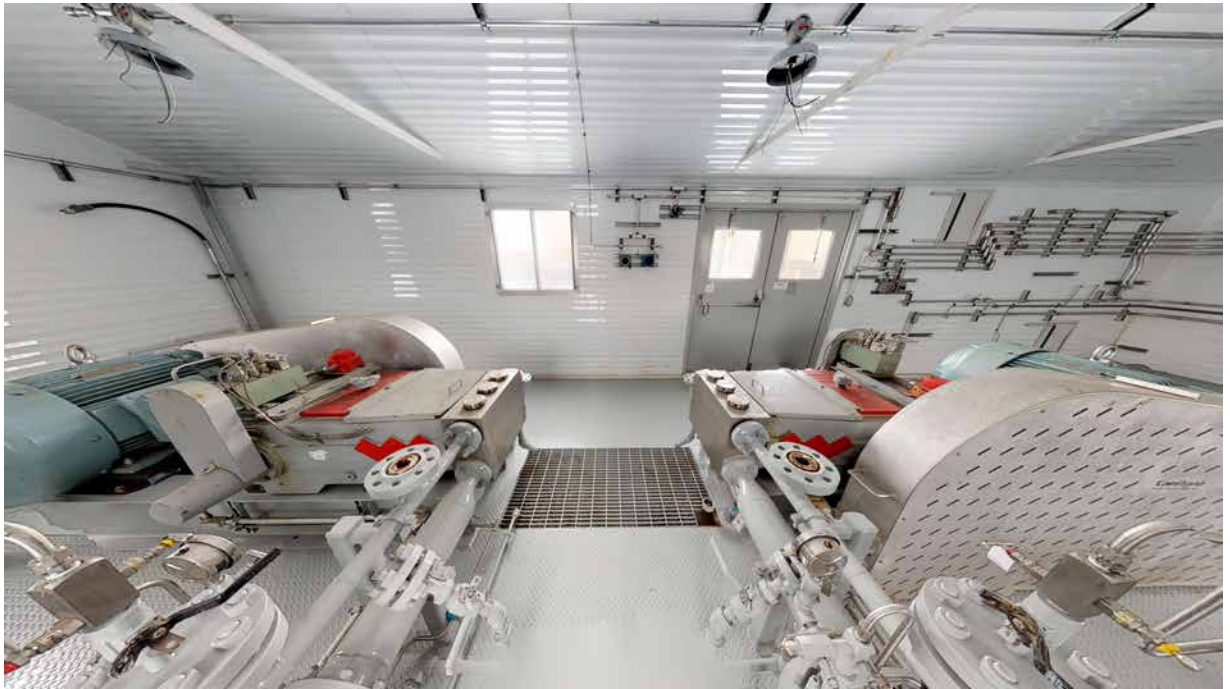
## END DEVICES CONNECTED TO JB'S

- Two (2) pressure transmitters (PIT-1100/1200) – Suction
- One (1) differential pressure transmitter (DPIT-1000) – Suction
- Two (2) pressure transmitters (PIT-1110/1210) – Discharge
- Two (2) vibration switch (VSH-1100/1200)
- Two (2) oil level switch low (LSLL-1100/1200)
- One (1) flow meter 4–20 connection (FE/FT-1000)
- One (1) sump level switch (LSH-1300)
- Included: Rigid aluminum conduit and steel unistrut used throughout
- Lamiconds for all switches, junction box's, and ESD's
- Top entry into junction boxes for all conduits













*Suction Piping Area: Lots of space to install Charge Pump(s), Skim Pumps, Additional Suction Header Piping - Your choice!*



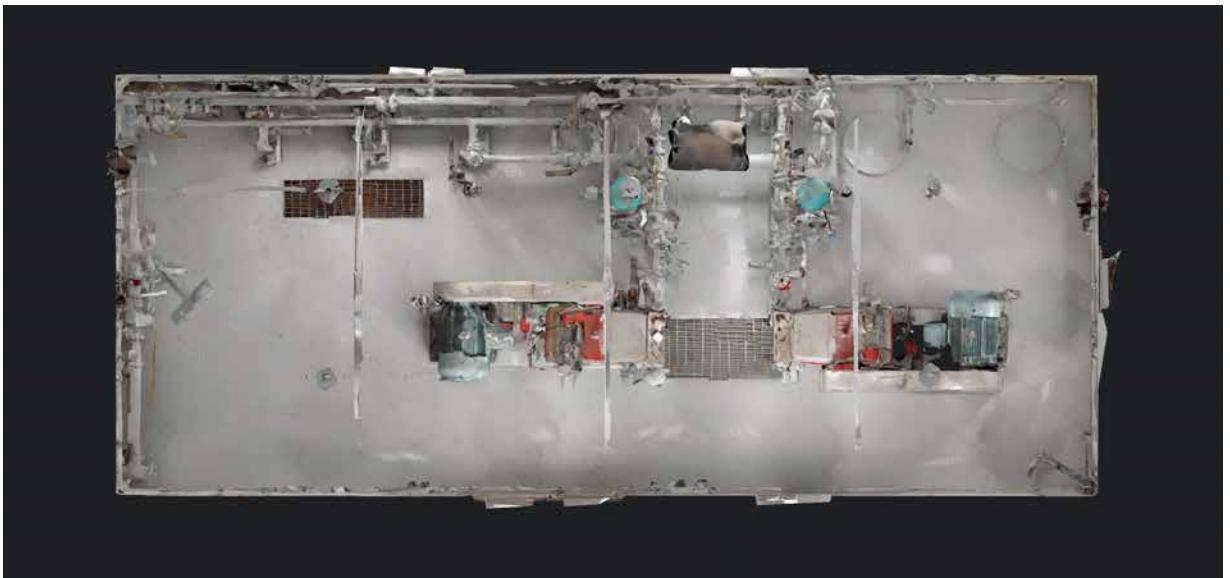
*Filter Provisions: Capacity for multiple filter configurations - all draining to sealed sump.*



*Air Compressors - Pre-wired and spaced for 2 x Instrument Air Compressors*



*Both suction and discharge stabilizers, as well as both PSV's are included in the price and will be ordered according to your site-specific application. Available for inspection anytime.*



Take a 3D walkthrough at <https://bit.ly/30R3ji0>