



#1828

30HP Triplex Pump Package

FOR IMMEDIATE SALE



Fully wired, tested, inspected, and field ready 30HP pump package ready to go. The skid, and piping were sandblasted and professionally repainted once the UT's confirmed the internally coated piping was still integrous; and the National 30T pump is in good condition verified by an inspection report. The rest of the package is ready to go as is (including a full wiring package to JB's); however if you need some customization for your application, we have preconfigured plans in place to add a charge pump and/or filters which could be completed in only a week or two. Call us today to see how this can fit your application.

FOR IMMEDIATE SALE

#1828

30HP Triplex Pump Package



Condition	Field Ready
Manufactured	NOV
Location	Nisku, AB
Status	Disconnected
Availability	Immediate
Service	Sour (Internally Coated)
Piping	3" 150# / 2" 600#
Electrical	Fully wired to JB's
Dimensions	Building is 19'6" L x 13' W w/ 9' eaves. Skid ships 22' L x 14'3" W x 12'9" H
Warranty	Available



Take a 3D walkthrough at <https://bit.ly/2qjeLoz>

Configuration

MAIN PUMP, MOTOR AND EQUIPMENT

National 30T-2L Pump:

- 1.75in Plungers rated for 1482PSI Discharge Pressure:
 - 150m³/day @ 441RPM (88% Max RPM)
 - All other plungers sizes are available.
- 3 Feed Lubricator w/ Day tank
- Vibration and Low Oil Level Switch
- Suction and Discharge Pulsation Stabilizers
- Mounted on Sub-skid and Attached to Main Skid
- Pull Bar Skid Design for Winch Truck Loading

Performance Data:

PUMP	English Units					200 * RPM		300 RPM		350 RPM		400 RPM		450 RPM		500 RPM	
	Plunger Dia. In.	Plunger Area Sq. In.	BPD per RPM	GPM per RPM	Max. Press. PSI	BPD	GPM	BPD	GPM	BPD	GPM	BPD	GPM	BPD	GPM	BPD	GPM
30T-2L	2.250	3.9761	3.5410	0.1033	897	709	20.66	1063	30.99	1240	36.16	1417	41.32	1594	46.49	1771	51.65
	2.000	3.1416	2.7980	0.0816	1135	560	16.32	840	24.48	980	28.56	1120	32.64	1260	36.72	1399	40.80
	1.750	2.4053	2.1430	0.0625	1482	429	12.50	643	18.75	751	21.88	858	25.00	965	28.13	1072	31.25
	1.500	1.7671	1.5737	0.0459	2000	315	9.18	473	13.77	551	16.07	630	18.36	709	20.66	787	22.95

Pump Notes:

- Full Pump Inspection is complete and available for viewing by interested parties.
- The pump can be taken "As Is" or adjusted by following our recommended requirements. By doing so, we'll reduce your risk and will provide a 6 OR 12 month warranty at no additional cost based on the adjustments.
- Pump was in good running order right through to shutdown in late 2018.

Electrical Motor:

- 15HP Electric Motor
- 480V, 3 Phase, 60Hz
- 1800RPM
- 30HP used and NEW motors in stock if required

PIPING

- Inlet / Outlet Piping
- 3" 150# Inlet Piping
- 2" 600# Discharge Piping:
 - 1 1/2" x 2" EZ-IN with Totalizer
 - Piping swedges down to 1" for a flow meter which was removed
- 1" Drain Header to Sump
- Internally coated

WIRED TO JB'S C/W:

- Interior / Exterior Lights
- ESD Button
- HOA for Main Motor
- 12V Receptacle

BUILDING & SKID:

- 12' x 18' x 8' Eave
- Roll-up Door on End
- Ridgevent
- 2 x Single Man Doors
- 1 x Rollup Door on End Wall
- 3 x Windows
- Sump
- Pull Bar skid for Winch loading/unloading
- One (1) Ruffneck Heater (Steam):
 - ~\$4000 to supply and Install Catadyne or 480V Ruffneck/Hazlok Electric Heater

Optional Configurations

The size and layout of the package allows easy re-configuration to accommodate charge pump, skim pump, and/or filters. Sample PID showing charge pump and filters is shown below. Pricing is available after a marked-up PID is provided.

CHARGE PUMP

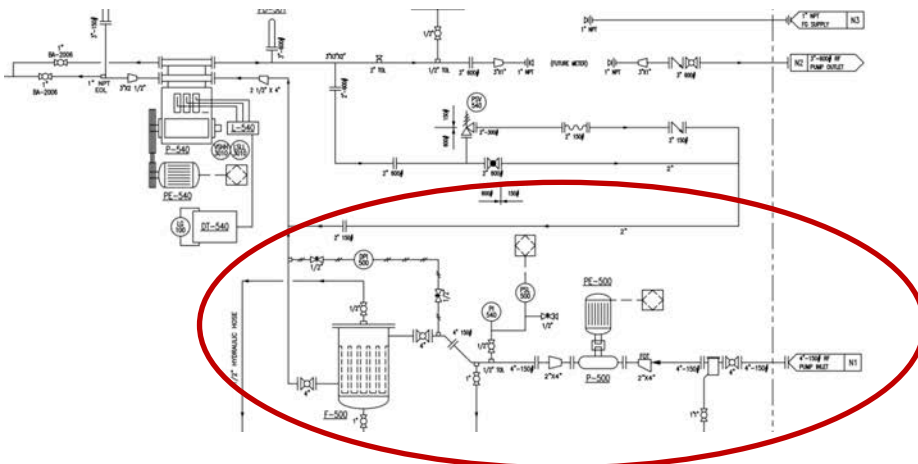
Grundfos CRN 10-4 rated at 50 GPM @ 60 PSI

- TEFC 3 HP Motor
- Low NPSH Impeller for < 5'

FILTER VESSEL

3 - P2 bag internally coated filter vessel

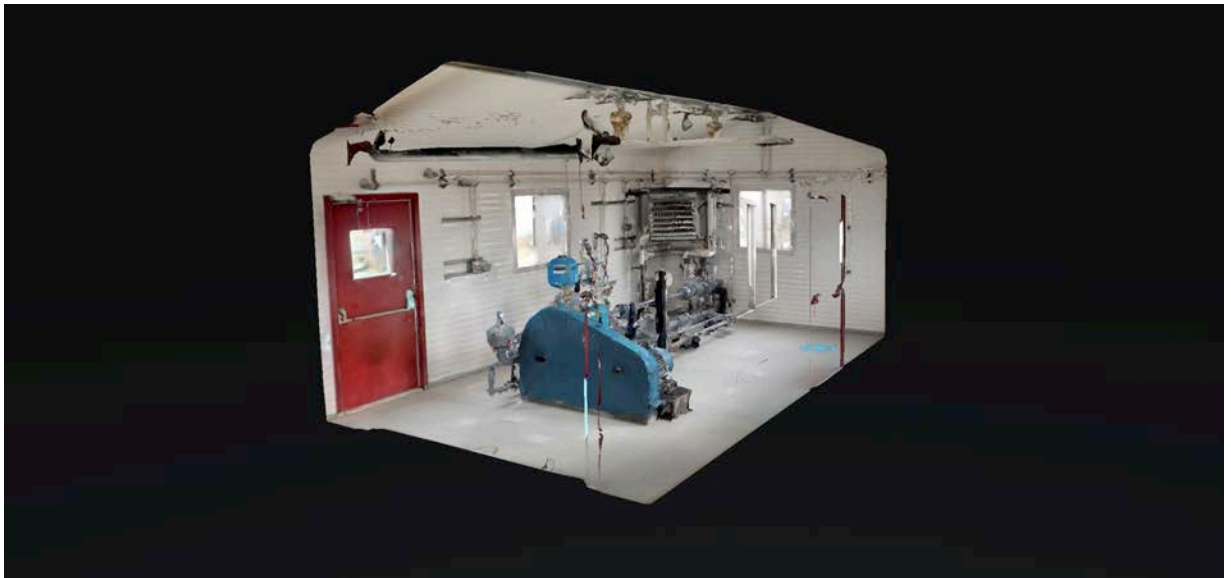
- Rated at 165 gpm
- 4" Inlet / Outlet











Take a 3D walkthrough at <https://bit.ly/2qieLoz>