

An aerial photograph of an industrial sour separator unit, which is a large, rectangular, light-colored metal structure with a corrugated metal roof. The unit is situated in an open, flat area. To the left of the unit, there is a complex network of large, dark-colored pipes and valves. A set of stairs with a metal railing leads up to the unit. The entire image is overlaid with a semi-transparent blue filter.

CJV#1891

# 60" ID x 20' 720psi Sour Separator



This separator is in great condition – built for sour and only ever used in sweet service. Commissioned in 2008, the vessel is currently setup for 2 phase service (water dump and panic dump), however all the connections and weir exist for it to have a 3rd phase added (1 week delivery and ~\$10,000). Full drawings, over 80 pictures, and more detailed information available upon request! Call us today!



CJV#1891

## 60" ID x 20' 720psi Sour Separator



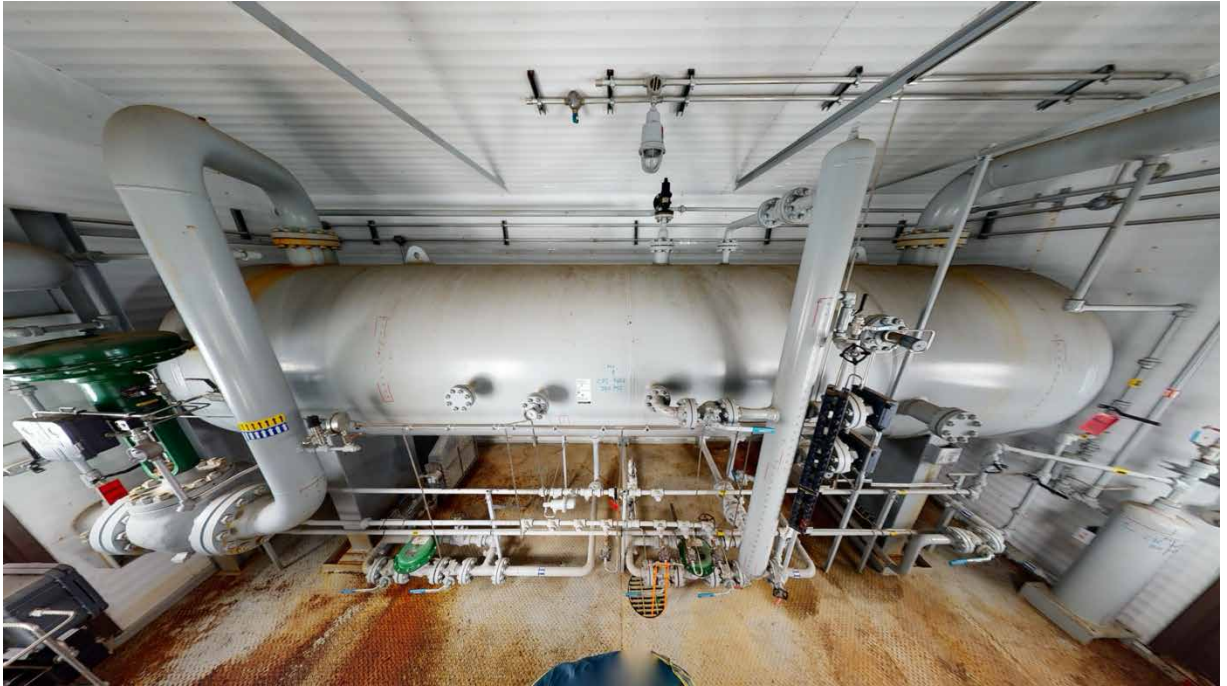
<b>Condition</b>	Used
<b>Manufactured</b>	Paintearth 2007
<b>Location</b>	Southern AB
<b>Status</b>	Connected; 1 week for disconnection
<b>Registration</b>	AB (BC/SK available)
<b>Service</b>	Sour
<b>Phases</b>	3 Phase, Dressed 2
<b>Vessel Connections</b>	8" Inlet & Outlet; 3" Liquid & Oil Outlet; 3" PSV
<b>Meter Run</b>	No Meter; Spool piece and BPCV included
<b>Instrumentation</b>	8" Fisher 600 ET Inlet Control Valve ; 8" Fisher 300# Actuated BPCV; SOR LSHH/LSLL, 2 x Mercer PSV's,
<b>Electrical</b>	2 x ESD Button, LEL Detection, Interior Light wired to Junction Box
<b>Building Dimensions</b>	12' width x 26' length x 13' height
<b>Building</b>	Two (2) Single Man Doors with Windows IWG; Two (2) 36" Windows w/ Screens; Two (2) 12" x 12" Adjustable Louvers; 3" Drip Lip around skid perimeter interior, Four (4) Catadyne Heaters w/ 12V start; Fuel Gas Scrubber, Floor drain piped to skid edge 2" connection

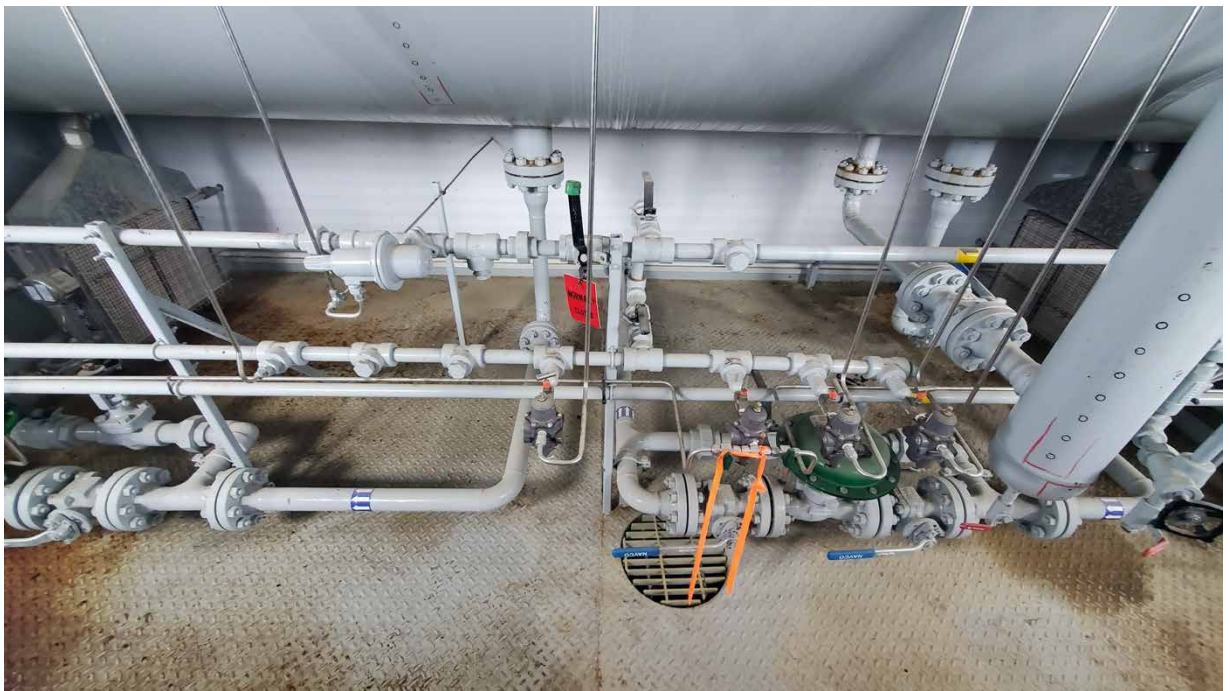


Take a 3D walkthrough at <https://bit.ly/3dw7Jke>













Take a 3D walkthrough at <https://bit.ly/3dw7Jke>