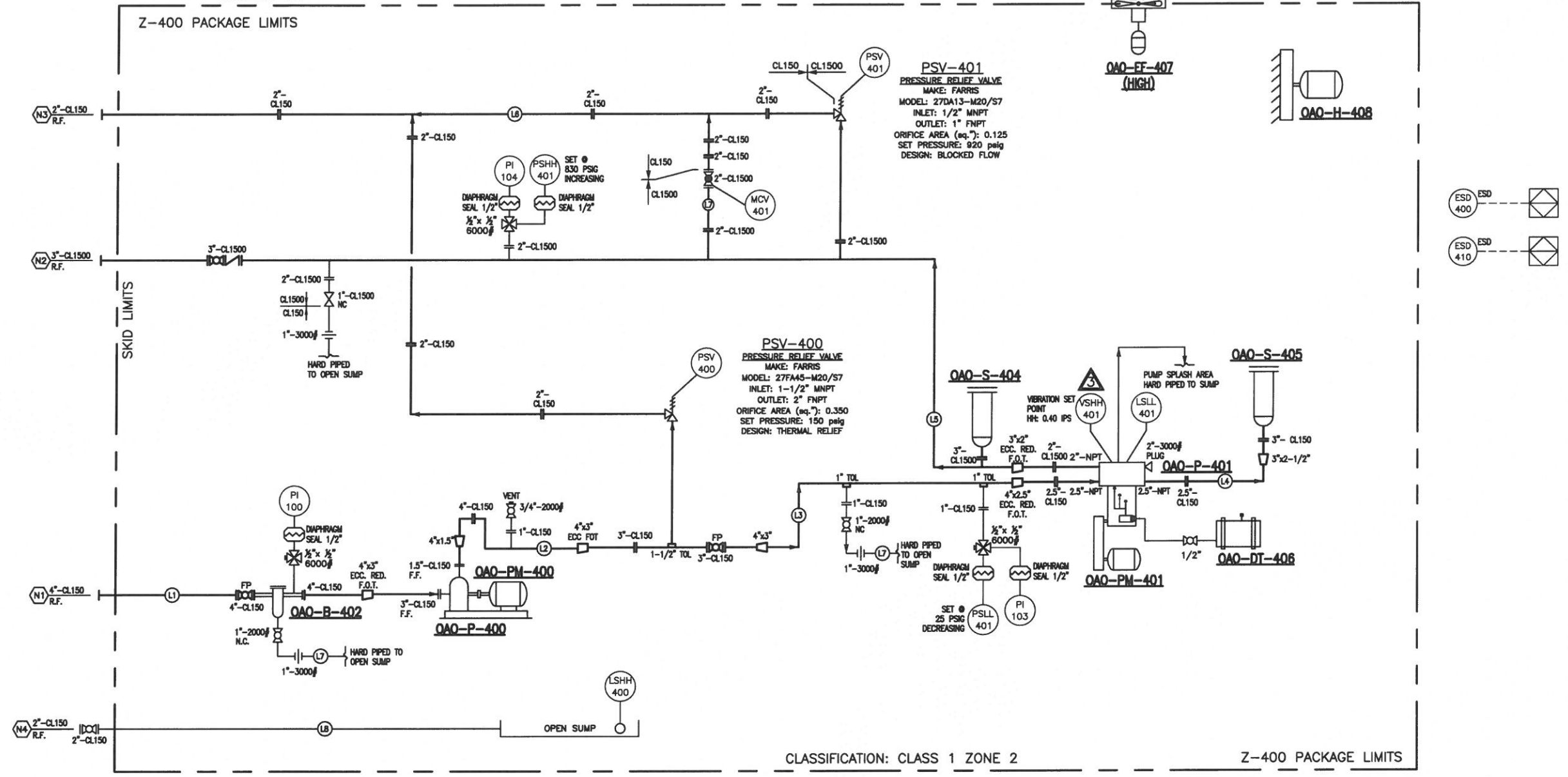


- QAO-B-402**
 BASKET STRAINER
 MODEL: ATLA
 SIZE: 4" CL150 RF
 BODY: A216 WCB
 BASKET: 304SS 1/8 SS PERF.
 DRAIN: 1" NPT
 MAWP: 285 PSIG @ -20/100°F
 CRN: AB/BC/SASK
 DESIGN TEMP: 250°F
- QAO-P-401**
 FEED OIL - TRIPLEX PLUNGER PUMP
 MAKE: MK
 MODEL: T59
 RATE BHP: 59 HP @ 420 RPM
 SUCTION: 2.5" NPT (8 TPI)
 DISCHARGE: 2" NPT (11.5 TPI)
 PLUNGER SIZE: 2.5"
 M.A.W.P.: 970 PSI
 VOLUME: 93 USGPM @ 100% VE & 417RPM
 OPERATING PRESSURE: 775 PSIG
 DESIGN TEMP: 250°F
- QAO-PM-401**
 ELECTRIC MOTOR (PLUNGER PUMP)
 MAKE: TECO-WESTINGHOUSE
 MODEL: PDH0808
 SIZE: 60 HP @ 1200 RPM
 480V/60Hz/3 PHASE
 FRAME: 404T
 ENCLOSURE: TEFC
 CLASS 1, DIV. 2
 INVERTER DUTY
- QAO-P-400**
 FEED OIL - CHARGE PUMP
 MAKE: CANDYNE
 MODEL: 1.5X3-10 MTX
 SUCTION: 3"-CL150 F.F.
 DISCHARGE: 1.5"-CL150 F.F.
 NPSHr: 2.59 FT
 SHUT-OFF HEAD: 104 FT
 TDH: 78.7 FT
 FLOW: 118 GPM
 DESIGN TEMP: 250°F
 SPEED: 1800 RPM
- QAO-PM-400**
 ELECTRIC MOTOR (CHARGE PUMP)
 MAKE: TECO-WESTINGHOUSE
 MODEL: 1.5X3-10 MTX
 SIZE: 7.5 HP @ 1800 RPM
 480V/60Hz/3 PHASE
 FRAME: 213T
 ENCLOSURE: TEFC
 CLASS 1, DIV. 2
 INVERTER DUTY
- QAO-S-405**
 SUCTION STABILIZER
 MAKE: COORSTEX
 MODEL: ST-1502.5-T-HNBR
 SIZE: 300 CUBIC INCH
 CONNECTION: 2.5" NPT
 M.A.W.P.: 285 PSI
 CRN: AB
 DESIGN TEMP: 250°F
- QAO-S-404**
 DISCHARGE STABILIZER
 MAKE: COORSTEX
 MODEL: S-14002-T-HNBR
 SIZE: 300 CUBIC INCH
 CONNECTION: 2" NPT
 M.A.W.P.: 1480 PSI
 CRN: AB
 DESIGN TEMP: 250°F
- QAO-DT-406**
 DAY TANK
 MAKE: KENCO
 SIZE: 30 GAL.
- QAO-H-408**
 UNIT HEATER
 MAKE: RUFFNECK
 MODEL: FX-5-480360-100-WT
 SIZE: 10 KW
 480V/60Hz/3 PHASE
- QAO-EF-407**
 EXHAUST FAN
 MAKE: VENTURI
 SIZE: 12"
 12 AIR CHANGES/HOUR
 120V/60Hz/1 PHASE



NOTES:
 1. ALL TUBING TO BE 316 SS SEAMLESS TUBING & FITTINGS TO BE SWAGelok UNLESS REQUESTED OTHERWISE.
 2. ALL INSTRUMENTATION COMPONENTS TO BE STAINLESS STEEL UNLESS INDICATED OTHERWISE.
 3. ALL CONTROL/SHUTDOWN LOGIC IS TO BE SETUP BY THE CLIENT.
 4. UNLESS NOTED OTHERWISE IT IS ASSUMED THAT VESSEL OVER PRESSURE PROTECTION HAS BEEN INCORPORATED IN THE CLIENT'S OPERATING PROCEDURE.
 5. ALL PIPING IS DESIGNED TO ASME B31.3

REVISION SYMBOL =

REVISIONS:

REV	DATE	DESCRIPTION	DWN	CHK	APP
A	2017.03.13	IFA	LF	LF	
B	2017.04.09	IFA	LF	LF	
C	2017.05.23	IFA	NS	GP	
D	2017.08.07	IFC	NS	GP	
1	2017.07.07	IFC	LF	LF	
2	2017.07.23	IFC	LF	LF	
3	2017.08.08	IFC (NEW PUMP MODEL)	LF	LF	

THIS DRAWING AND DATA EMBODY INFORMATION WHICH IS THE CONFIDENTIAL PROPERTY OF CANDYNE PUMP SERVICES INC. AND SHALL NOT BE COPIED, REPRODUCED, DISCLOSED TO OTHERS, OR USED IN WHOLE OR IN PART FOR ANY PURPOSE, WITHOUT THE EXPRESS WRITTEN CONSENT OF CANDYNE PUMP SERVICES INC.

APPROVALS:

APPROVED FOR CONSTRUCTION
 DRAWINGS SHALL NOT BE USED FOR FABRICATION UNLESS THE THIS STAMP HAS BEEN SIGNED AND DATED BY CANDYNE PERSONNEL WORK COMPLETED WITHOUT THIS APPROVAL IS AT THE RISK AND EXPENSE OF THE FABRICATOR. REFER TO NOTES BELOW.

☐ APPROVED - PROCEED WITH CONSTRUCTION
☐ APPROVED AS NOTED - PROCEED WITH CONSTRUCTION

SIGNATURE _____ DATE _____

CanDyne
 Pump Services Inc.

CLIENT: **SENTIO ENGINEERING**
 PACKAGE: **PROJECT 3973**
WATER INJECTION PUMP PACKAGE
PROCESS & INSTRUMENTATION DIAGRAM

DRAWN: T.A. DATE: 21.12.2012 DESIGN: G.P. SCALE: NTS REV: 3
 DRAWING NUMBER: **3973-01**

LINE LIST																							
LINE NO.	PIPE SPEC.	PIPE SIZE (in)	DESCRIPTION		PRESSURE (kPag)			TEMPERATURE (°C)		C.A (mm)	PIPE SCH.	X-RAY (%)	INT. COAT Y/N	MATL.	ANSI CLASS	INSULATION		SERVICE	FLUID	POST WELD TREATMENTS	TRACING	REFERENCE P&ID	COMMENTS
			FROM	TO	DESIGN	OPERATING	HYDRO TEST	DESIGN	OPERATING							TYPE	THK.						
L1	ASN	4	SKID EDGE (N1)	P-101	1,034	100	2,948	-29 TO 121	80 TO 120	3.2	40	100	N	A106B	CL150	N/A	N/A	SWEET	OIL	N/A	ET	3973-01	NOTE 1,3
L2	ASN	3	P-101	F-100	1,034	345	2,948	-29 TO 121	80 TO 120	3.2	40	100	N	A106B	CL150	N/A	N/A	SWEET	OIL	N/A	ET	3973-01	NOTE 1,3
L3	ASN	3 / 4	F-100	P-100	1,034	345	2,948	-29 TO 121	80 TO 120	3.2	40	100	N	A106B	CL150	N/A	N/A	SWEET	OIL	N/A	ET	3973-01	NOTE 1,3
L4	ASN	2.5 / 2	P-100	S-101	1,034	345	2,948	-29 TO 121	80 TO 120	3.2	40	100	N	A106B	CL150	N/A	N/A	SWEET	OIL	N/A	ET	3973-01	NOTE 1,3
L5	ESN1	3	P-100	SKID EDGE (N2)	24,821	18,615	38,318	-29 TO 121	80 TO 120	3.2	XXS	100	N	A106B	CL1500	N/A	N/A	SWEET	OIL	N/A	ET	3973-01	NOTE 1,3
L6	ASN	2	PSV-101 PSV-102	SKID EDGE (N3)	1,034	ATM	2,948	-29 TO 121	80 TO 120	3.2	40	100	N	A106B	CL150	N/A	N/A	SWEET	OIL	N/A	ET	3973-01	NOTE 1,3
L7	ASN	1	L1, L2, L3, L5	OPEN SUMP	N/A	ATM	N/A	-29 TO 121	80 TO 120	3.2	40	100	N	A106B	CL150	N/A	N/A	SWEET	OIL	N/A	ET	3973-01	NOTE 1,2,3
L8	NON CODE	2	OPEN SUMP	SKID EDGE (N6)	N/A	ATM	N/A	-29 TO 121	80 TO 120	3.2	80	-	N	A106B	CL150	N/A	N/A	SWEET	OIL	N/A	ET	3973-01	NOTE 1,2,3

NOTES:

1. PIPING SPECS AS PER CANDYNE INC SPECIFICATION ASN (FEB, 2011) REV 2 & ESN1 (FEB, 2011)
2. DESIGN FOR ATMOSPHERIC CONDITION. ALL NDE AND HYDRO-TEST WAIVED FOR THESE LINES.
3. HEAT TRACE TO MAINTAIN 80°C, INSULATE W/ MINERAL WOOL PIPE INSULATION WITH BANDS TO HOLD IN PLACE. CLADDING NOT REQUIRED.

REVISION SYMBOL = 

REVISIONS:

REV	DATE	DESCRIPTION	DWN	CHK	APP
A	2017.03.13	IFA	LF	LF	
B	2017.04.09	IFA	LF	LF	
C	2017.05.23	IFA	NS	GP	
D	2017.06.07	IFC	NS	GP	

THIS DRAWING AND DATA EMBODY INFORMATION WHICH IS THE CONFIDENTIAL PROPERTY OF CANDYNE PUMP SERVICES INC. AND SHALL NOT BE COPIED, REPRODUCED, DISCLOSED TO OTHERS, OR USED IN WHOLE OR IN PART FOR ANY PURPOSE, WITHOUT THE EXPRESS WRITTEN CONSENT OF CANDYNE PUMP SERVICES INC.

APPROVALS:

APPROVED FOR CONSTRUCTION
DRAWINGS SHALL NOT BE USED FOR FABRICATION UNLESS THE THIS STAMP HAS BEEN SIGNED AND DATED BY CANDYNE PERSONNEL
WORK COMPLETED WITHOUT THIS APPROVAL IS AT THE RISK AND EXPENSE OF THE FABRICATOR. REFER TO NOTES BELOW.

☐ APPROVED - PROCEED WITH CONSTRUCTION
☐ APPROVED AS NOTED - PROCEED WITH CONSTRUCTION

SIGNATURE

DATE

CanDyne
Pump Services Inc.

CLIENT:

PACKAGE: **PROJECT 3973**
WATER INJECTION PUMP PACKAGE
LINE LIST

DRAWN: T.A.

DATE: 21.12.2012

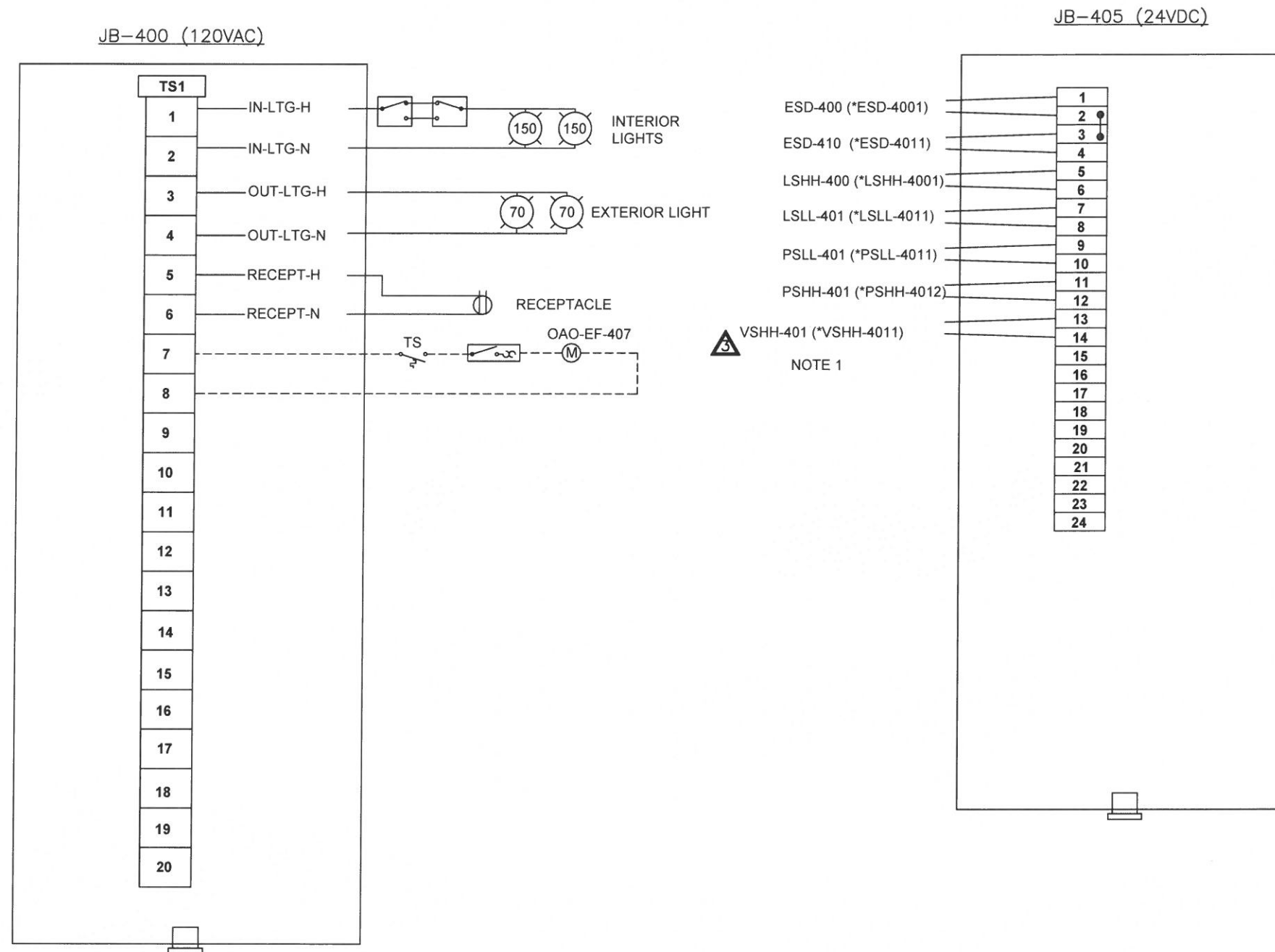
DESIGN: G.P.

SCALE: NTS

REV: 0

DRAWING NUMBER: **3973-02**

REVISION SYMBOL = 



Material List	
QTY	DESCRIPTION
1	Power Junction boxes (PJ16148RT) (120VAC) C/W 14R15B backpan
1	Control Junction boxes (PJ16148RT) (24VDC) C/W 14R15B backpan
2	150W HPS interior light fixtures (VMVS2A150GP)
2	70W HPS exterior light fixtures (VMVS2TW070GP)
2	ESD button c/w shroud (DSD-915SA-5769)
2	Interior light switch 3-way (DSDF-936SA)
1	Receptacle (ENR5201)
1	thermostats for exhaust fan (XT-312)
1	Exhaust fan manual motor starter switch (DSFS-910SA)
2	Motor Switches HOA (SDS-925SA)
AR	Rigid aluminum conduit and steel unistrut used throughout

INSTALLATION DETAILS

1. Crouse Hinds fittings
2. All wiring done to Class I Zone 2 area classification inside and outside of the building.
3. Laminoids for all end devices, junction box's, & ESD's.
4. Bottom entry into junction boxes.
5. All devices to be tagged as per junction box layout. Tagging remains to be confirmed by client.
6. Packing and pouring of conduit seals is NOT included.
7. Ground lugs not included.
8. Wiring method shall be rigid aluminum conduit. Conduit support shall be galvanized steel unistrut fastened with one piece T&B "Cobra" clamps.
9. Separate between 120V and Analog /Discrete conduits. Analog /Discrete share the same conduits.
10. Weidmuller WDU2.5 terminals for analog and discrete wiring. Weidmuller WDU14 terminals for 120VAC wiring.

NOTE:
1. TAG# IN BRACKETS RELATES TO THE TAG# AS SHOWN ON
SENTIO DWG FSO-OAO-PR-PID-0002-01)

NOTES:

REVISIONS:					
REV	DATE	DESCRIPTION	DWN	CHK	APP
A	2017.07.08	ISSUED FOR REVIEW	LF	LF	
0	2017.07.23	IFC	LF	LF	
1	2017.08.09	IFC (VT TO VSHH)	LF	LF	

THIS DRAWING AND DATA EMBODY INFORMATION WHICH IS THE CONFIDENTIAL PROPERTY OF CANDYNE PUMP SERVICES INC. AND SHALL NOT BE COPIED, REPRODUCED, DISCLOSED TO OTHERS, OR USED IN WHOLE OR IN PART FOR ANY PURPOSE, WITHOUT THE EXPRESS WRITTEN CONSENT OF CANDYNE PUMP SERVICES INC.

APPROVALS:

APPROVED FOR CONSTRUCTION

DRAWINGS SHALL NOT BE USED FOR FABRICATION UNLESS THE
THIS STAMP HAS BEEN SIGNED AND DATED BY CANDYNE PERSONNEL
WORK COMPLETED WITHOUT THIS APPROVAL IS AT THE RISK AND
EXPENSE OF THE FABRICATOR. REFER TO NOTES BELOW.

- ☐ APPROVED - PROCEED WITH CONSTRUCTION
☐ APPROVED AS NOTED - PROCEED WITH CONSTRUCTION

SIGNATURE

DATE _____

CanDyne
Pump Services Inc.

CLIENT: **SENTIO ENGINEERING**

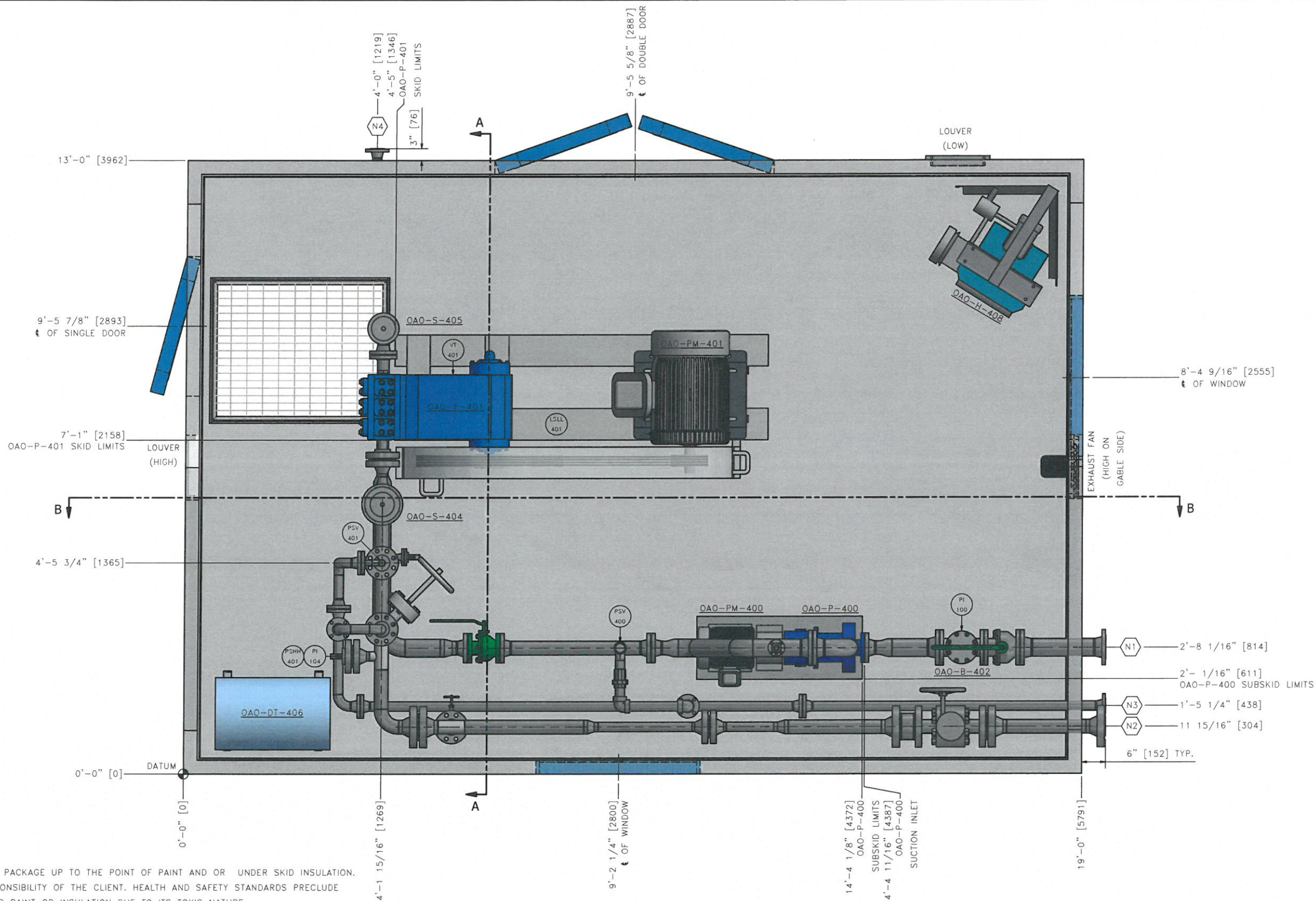
PACKAGE: PROJECT 3973
WATER INJECTION PUMP PACKAGE
JUNCTION BOX LAYOUT

DRAWN:	DATE:	DESIGN:	SCALE:	REV:
T.A.	21.12.2012	G.P.	NTS	0

DRAWING NUMBER:

3973-17

REVISION SYMBOL =



MOTOR CABLE SLEEVES CAN BE ADDED TO THE PACKAGE UP TO THE POINT OF PAINT AND OR UNDER SKID INSULATION. THE SIZE AND LOCATION(S) WILL BE THE RESPONSIBILITY OF THE CLIENT. HEALTH AND SAFETY STANDARDS PRECLUDE CANDYNE FROM WELDING ON OR TORCH CUTTING PAINT OR INSULATION DUE TO ITS TOXIC NATURE.

NOZZLE SCHEDULE:

TAG	DESCRIPTION	SIZE (O.D.)	RATING	FACING	ELEV./F.O.F.	COMMENTS
N1	SUCTION INLET	4"	CL150	RF	-	-
N2	DISCHARGE OUTLET	3"	CL1500	RF	-	-
N3	BYPASS OUTLET	2"	CL150	RF	-	-
N4	SUMP DRAIN	2"	CL150	RF	-	-

REVISIONS:

REV	DATE	DESCRIPTION	DWN	CHK	APP
A	2017.03.26	IFA	RL	LF	LF
B	2017.05.25	IFA	NS	GP	-
C	2017.05.31	IFC	NS	-	GP

THIS DRAWING AND DATA EMBODY INFORMATION WHICH IS THE CONFIDENTIAL PROPERTY OF CANDYNE INC. AND SHALL NOT BE COPIED, REPRODUCED, DISCLOSED TO OTHERS, OR USED IN WHOLE OR IN PART FOR ANY PURPOSE, WITHOUT THE EXPRESS WRITTEN CONSENT OF CANDYNE INC.

APPROVALS:

APPROVED FOR CONSTRUCTION

DRAWINGS SHALL NOT BE USED FOR FABRICATION UNLESS THIS STAMP HAS BEEN SIGNED AND DATED BY CANDYNE PERSONNEL. WORK COMPLETED WITHOUT THIS APPROVAL IS AT THE RISK AND EXPENSE OF THE FABRICATOR. REFER TO NOTES BELOW.

☐ APPROVED - PROCEED WITH CONSTRUCTION

☐ APPROVED AS NOTED - PROCEED WITH CONSTRUCTION

SIGNATURE _____ DATE _____

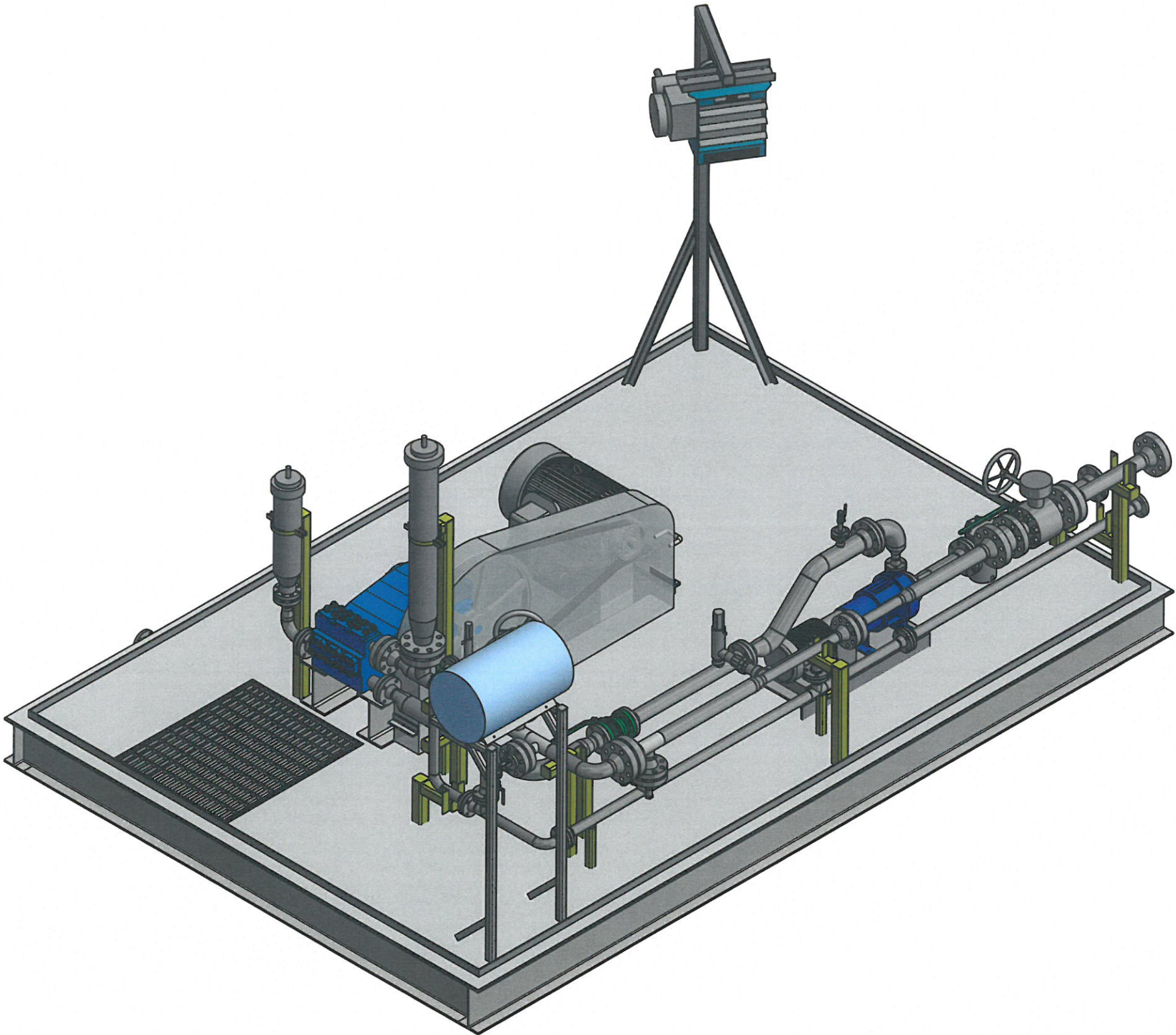
CanDyne Inc

CLIENT: SENTIO ENGINEERING

PACKAGE: PROJECT #3973
WATER INJECTION PUMP PACKAGE
GENERAL ARRANGEMENT DRAWING

DRAWN: DATE:(YYYY/MM/DD) DESIGN: SCALE: REV.:
RL 2017.03.26 LF 1:13 0

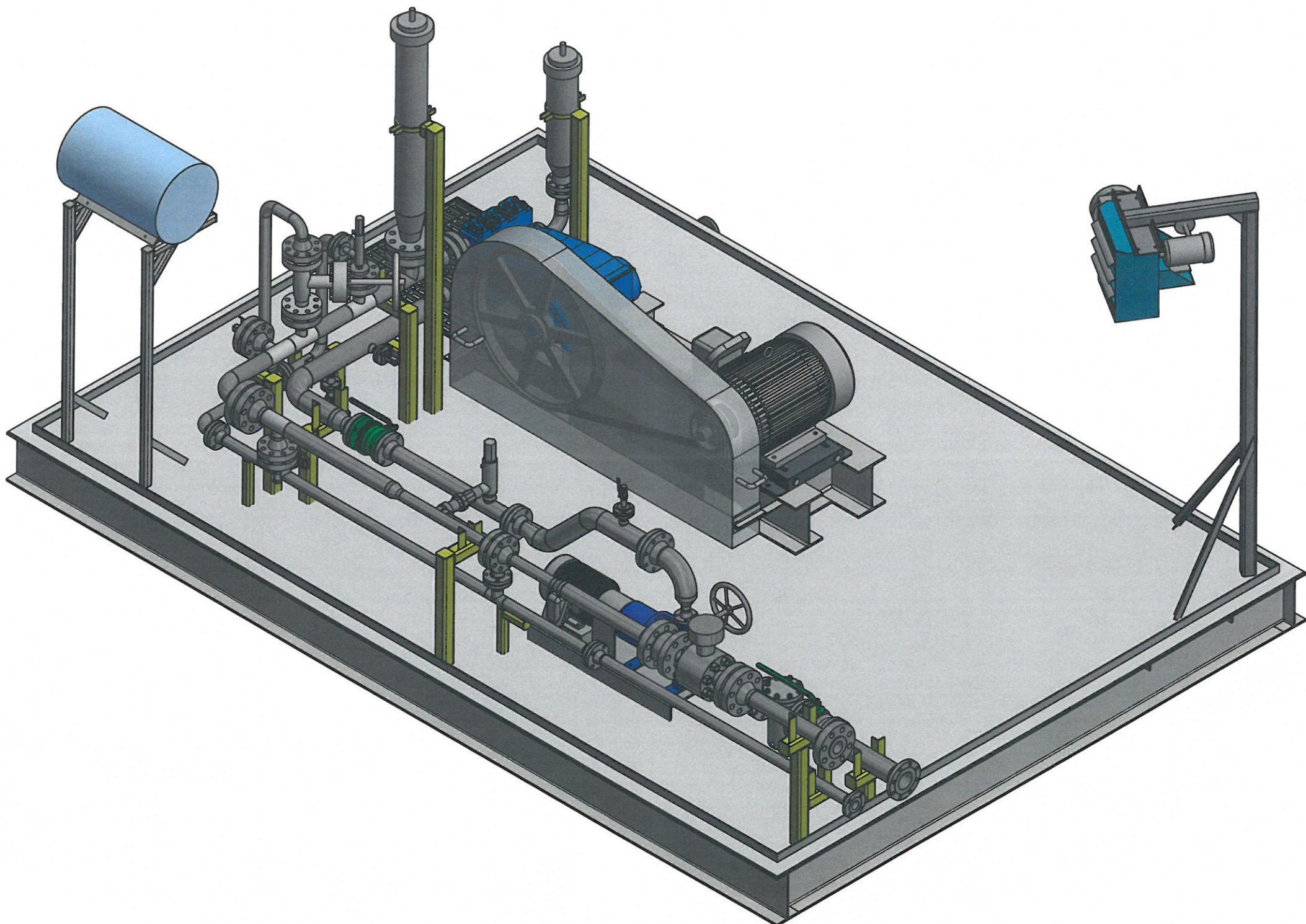
DRAWING NUMBER: 3973-10



REVISIONS:					
REV	DATE	DESCRIPTION	DWN	CHK	APP
0	2017.05.31	IFC	NS	—	GP
THIS DRAWING AND DATA EMBODY INFORMATION WHICH IS THE CONFIDENTIAL PROPERTY OF CANDYNE INC. AND SHALL NOT BE COPIED, REPRODUCED, DISCLOSED TO OTHERS, OR USED IN WHOLE OR IN PART FOR ANY PURPOSE, WITHOUT THE EXPRESS WRITTEN CONSENT OF CANDYNE INC.					


APPROVALS:	
<div><div>APPROVED FOR CONSTRUCTION</div><div>DRAWINGS SHALL NOT BE USED FOR FABRICATION UNLESS THIS STAMP HAS BEEN SIGNED AND DATED BY CANDYNE PERSONNEL. WORK COMPLETED WITHOUT THIS APPROVAL IS AT THE RISK AND EXPENSE OF THE FABRICATOR. REFER TO NOTES BELOW.</div><div><input type="checkbox"/> APPROVED – PROCEED WITH CONSTRUCTION</div><div><input type="checkbox"/> APPROVED AS NOTED – PROCEED WITH CONSTRUCTION</div></div>	
SIGNATURE _____	DATE _____

CanDyne Inc				
CLIENT: SENTIO ENGINEERING				
PACKAGE: PROJECT #3973				
WATER INJECTION PUMP PACKAGE				
ISOMETRIC DRAWING 1				
DRAWN: NS	DATE: 2017.05.31	DESIGN: LF	SCALE: NTS	REV.: 0
DRAWING NUMBER: 3973-11				

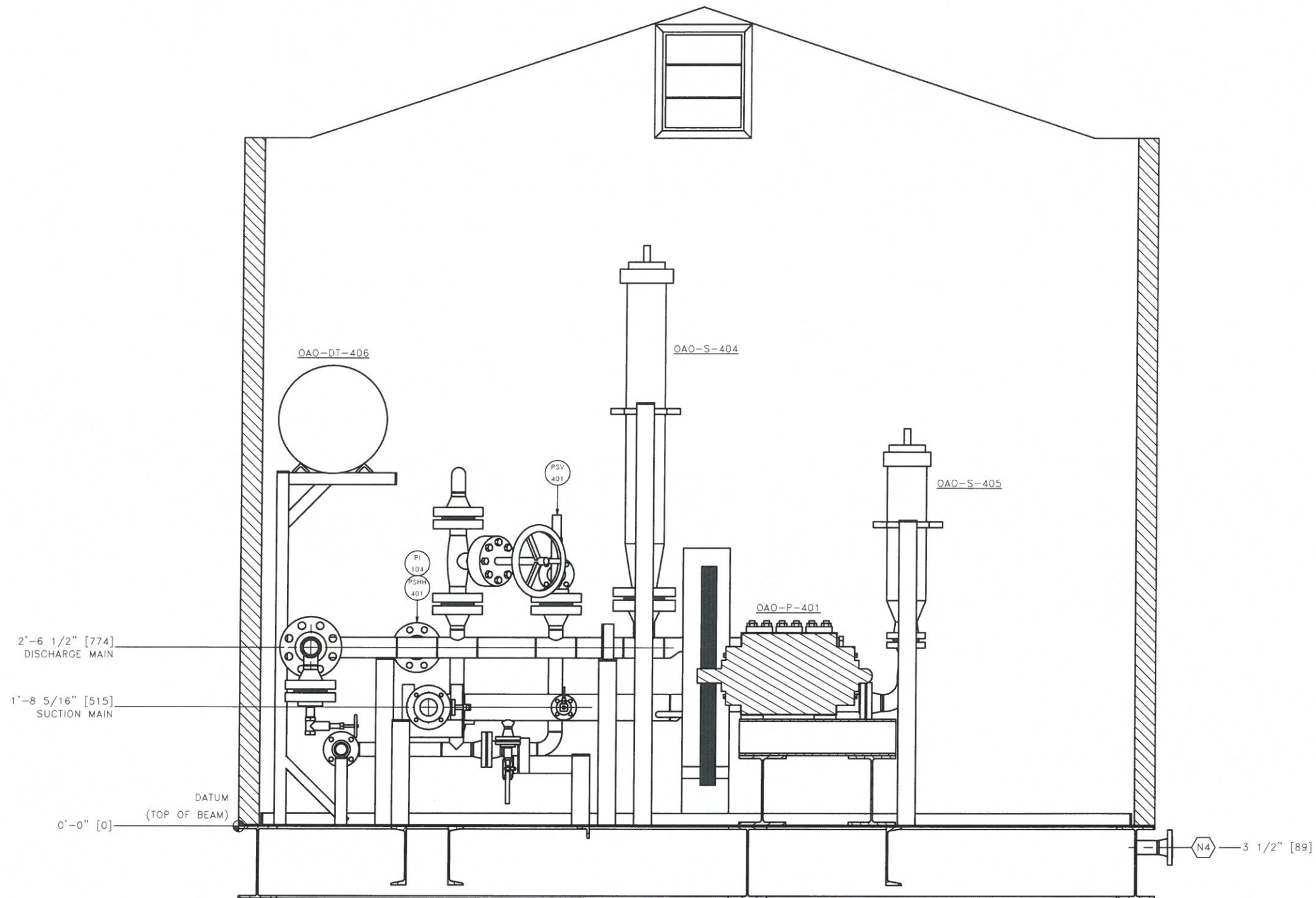


REVISIONS:					
REV	DATE	DESCRIPTION	DWN	CHK	APP
0	2017.05.31	IFC	NS	—	GP
THIS DRAWING AND DATA EMBODY INFORMATION WHICH IS THE CONFIDENTIAL PROPERTY OF CANDYNE INC. AND SHALL NOT BE COPIED, REPRODUCED, DISCLOSED TO OTHERS, OR USED IN WHOLE OR IN PART FOR ANY PURPOSE, WITHOUT THE EXPRESS WRITTEN CONSENT OF CANDYNE INC.					

APPROVALS:	
<div>APPROVED FOR CONSTRUCTION</div> <div>DRAWINGS SHALL NOT BE USED FOR FABRICATION UNLESS THIS STAMP HAS BEEN SIGNED AND DATED BY CANDYNE PERSONNEL. WORK COMPLETED WITHOUT THIS APPROVAL IS AT THE RISK AND EXPENSE OF THE FABRICATOR. REFER TO NOTES BELOW.</div> <div><input type="checkbox"/> APPROVED — PROCEED WITH CONSTRUCTION</div> <div><input type="checkbox"/> APPROVED AS NOTED — PROCEED WITH CONSTRUCTION</div>	
SIGNATURE _____	DATE _____



CLIENT: SENTIO ENGINEERING	
PACKAGE: PROJECT #3973	
WATER INJECTION PUMP PACKAGE	
ISOMETRIC DRAWING 2	
DRAWN: NS	DATE: 2017.05.31
DESIGN: LF	SCALE: NTS
REV.: 0	DRAWING NUMBER: 3973-12

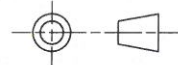


ELEVATION A-A
SCALE 1:10

NOTES:

REVISION SYMBOL =

THIRD ANGLE PROJECTION



REVISIONS:					
REV	DATE	DESCRIPTION	DWN	CHK	APP
A	2017.03.26	IFA	RL	RL	LF
0	2017.05.31	IFC	NS	-	GP
THIS DRAWING AND DATA EMBODY INFORMATION WHICH IS THE CONFIDENTIAL PROPERTY OF CANDYNE INC. AND SHALL NOT BE COPIED, REPRODUCED, DISCLOSED TO OTHERS, OR USED IN WHOLE OR IN PART FOR ANY PURPOSE, WITHOUT THE EXPRESS WRITTEN CONSENT OF CANDYNE INC.					

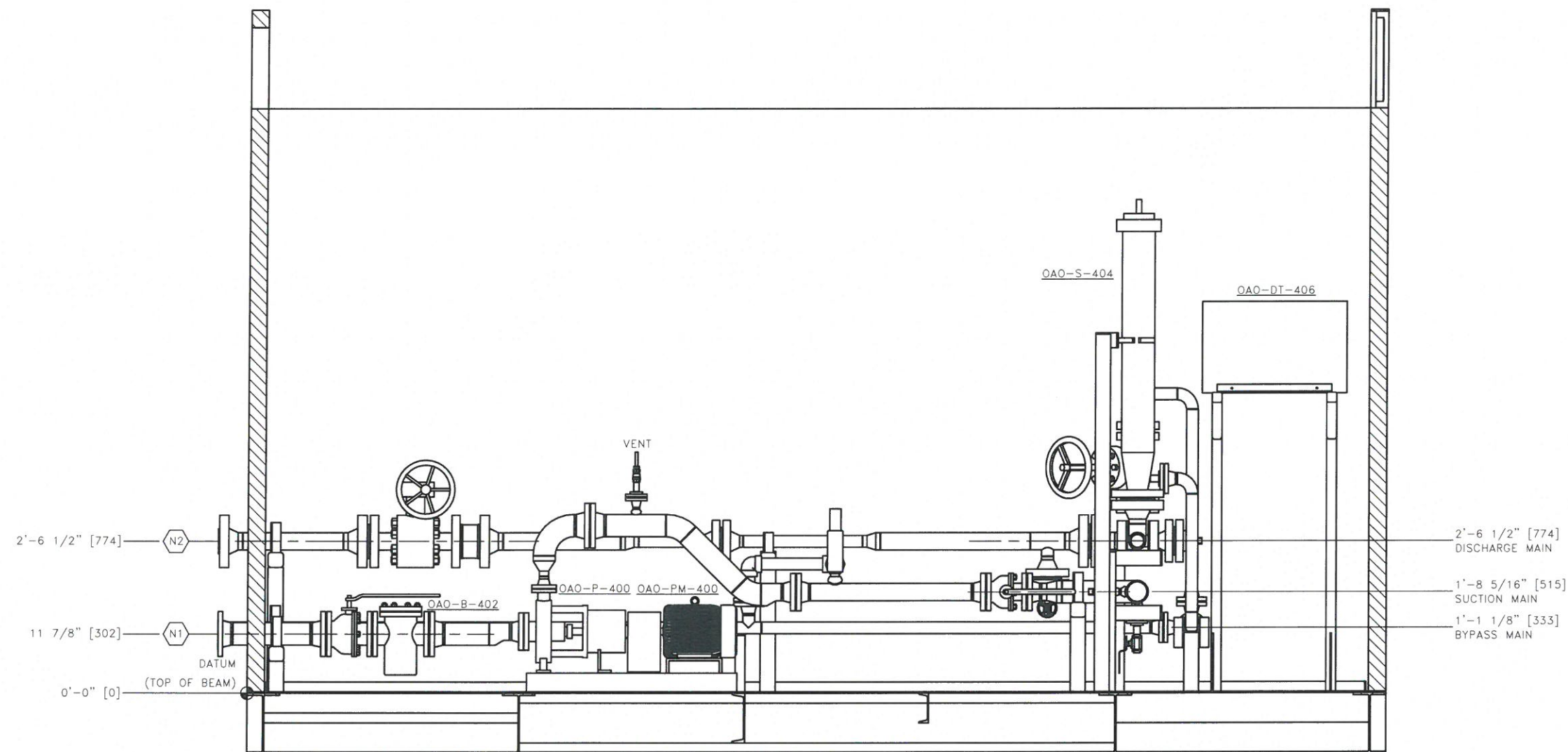
APPROVALS:

APPROVED FOR CONSTRUCTION
DRAWINGS SHALL NOT BE USED FOR FABRICATION UNLESS THIS STAMP HAS BEEN SIGNED AND DATED BY CANDYNE PERSONNEL. WORK COMPLETED WITHOUT THIS APPROVAL IS AT THE RISK AND EXPENSE OF THE FABRICATOR. REFER TO NOTES BELOW.
☐ APPROVED - PROCEED WITH CONSTRUCTION
☐ APPROVED AS NOTED - PROCEED WITH CONSTRUCTION

SIGNATURE _____ DATE _____

CanDyne Inc

CLIENT:	SENTIO ENGINEERING			
PACKAGE:	PROJECT #3939 WATER INJECTION PUMP PACKAGE ELEVATION A-A DRAWING			
DRAWN: RL	DATE: 2017.03.26	DESIGN: RL	SCALE: 1:10	REV: 0
DRAWING NUMBER:	3973-13			



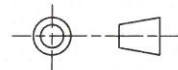
ELEVATION B-B

SCALE 1:13

NOTES:

REVISION SYMBOL =

THIRD ANGLE PROJECTION



REVISIONS:						
REV	DATE	DESCRIPTION	DWN	CHK	APP	
A	2017.03.26	IFA	RL	RL	LF	
0	2017.05.31	IFC	NS	-	GP	
THIS DRAWING AND DATA EMBODY INFORMATION WHICH IS THE CONFIDENTIAL PROPERTY OF CANDYNE INC. AND SHALL NOT BE COPIED, REPRODUCED, DISCLOSED TO OTHERS, OR USED IN WHOLE OR IN PART FOR ANY PURPOSE, WITHOUT THE EXPRESS WRITTEN CONSENT OF CANDYNE INC.						

APPROVALS:

APPROVED FOR CONSTRUCTION

DRAWINGS SHALL NOT BE USED FOR FABRICATION UNLESS THIS STAMP HAS BEEN SIGNED AND DATED BY CANDYNE PERSONNEL. WORK COMPLETED WITHOUT THIS APPROVAL IS AT THE RISK AND EXPENSE OF THE FABRICATOR. REFER TO NOTES BELOW.

☐ APPROVED - PROCEED WITH CONSTRUCTION

☐ APPROVED AS NOTED - PROCEED WITH CONSTRUCTION

SIGNATURE

DATE

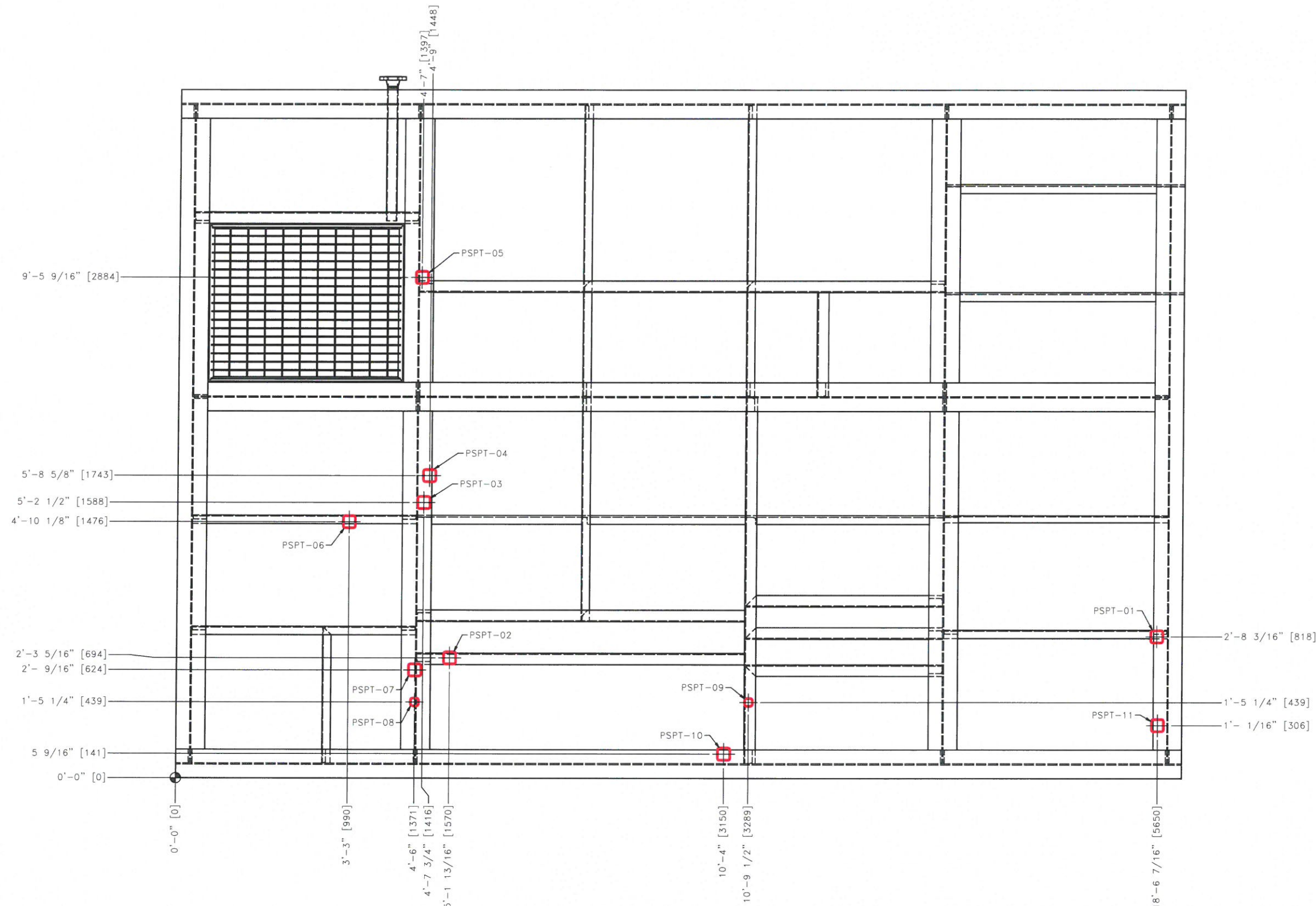
CanDyne Inc

CLIENT: SENTIO ENGINEERING

PACKAGE: PROJECT #3973
WATER INJECTION PUMP PACKAGE
ELEVATION B-B DRAWING

DRAWN: RL	DATE: 2017.03.26	DESIGN: RL	SCALE: 1:13	REV: 0
-----------	------------------	------------	-------------	--------

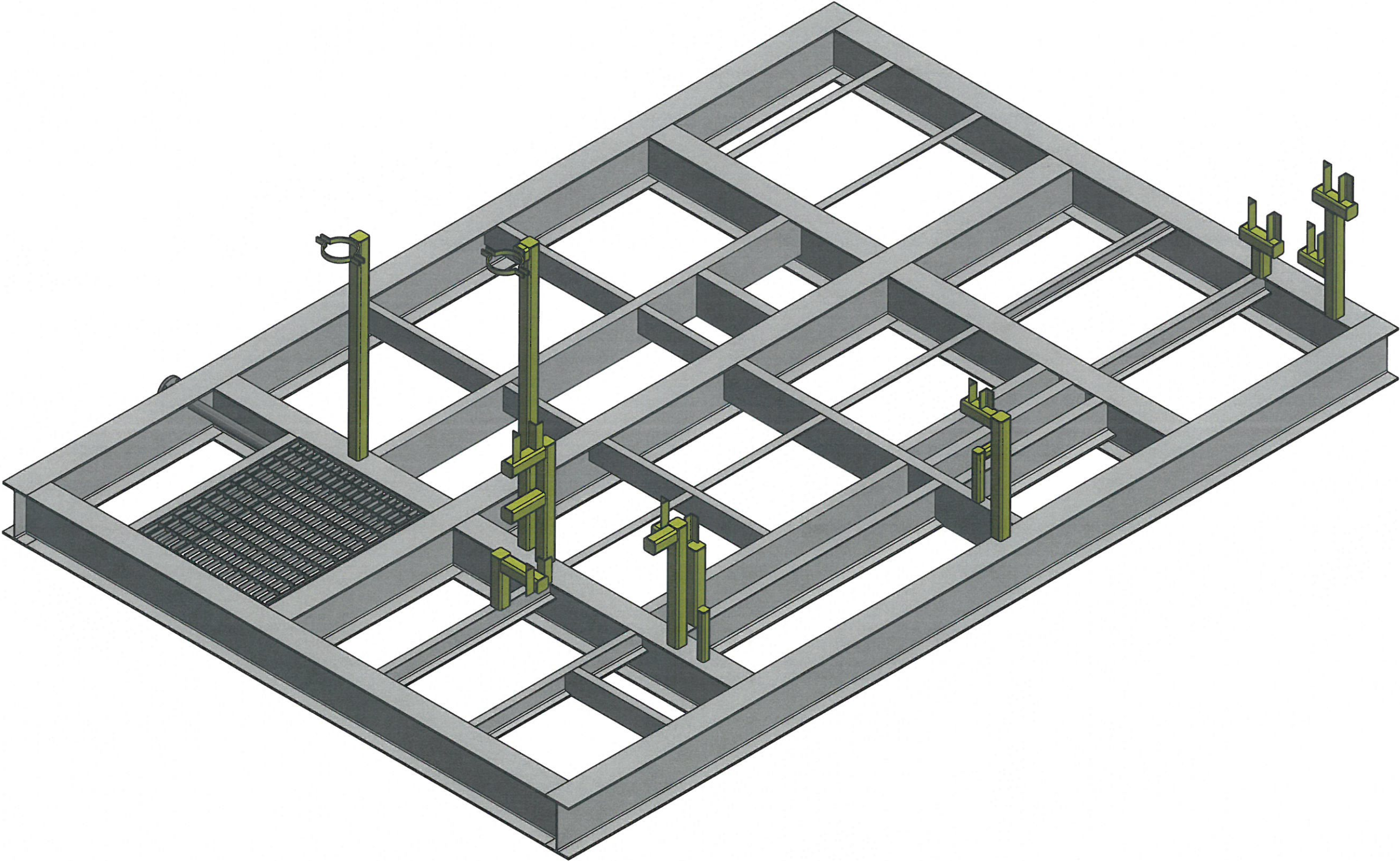
DRAWING NUMBER: 3973-14



REVISIONS:					
REV	DATE	DESCRIPTION	DWN	CHK	APP
0	2017.06.09	IFC	NS	NS	-
THIS DRAWING AND DATA EMBODY INFORMATION WHICH IS THE CONFIDENTIAL PROPERTY OF CANDYNE INC. AND SHALL NOT BE COPIED, REPRODUCED, DISCLOSED TO OTHERS, OR USED IN WHOLE OR IN PART FOR ANY PURPOSE, WITHOUT THE EXPRESS WRITTEN CONSENT OF CANDYNE INC.					

APPROVALS:	
<div>APPROVED FOR CONSTRUCTION</div> <div>DRAWINGS SHALL NOT BE USED FOR FABRICATION UNLESS THIS STAMP HAS BEEN SIGNED AND DATED BY CANDYNE PERSONNEL. WORK COMPLETED WITHOUT THIS APPROVAL IS AT THE RISK AND EXPENSE OF THE FABRICATOR. REFER TO NOTES BELOW.</div> <div><input type="checkbox"/> APPROVED - PROCEED WITH CONSTRUCTION</div> <div><input type="checkbox"/> APPROVED AS NOTED - PROCEED WITH CONSTRUCTION</div>	
SIGNATURE	DATE

CanDyne Inc				
CLIENT:				
PACKAGE: PROJECT #3973				
WATER INJECTION PUMP PACKAGE				
PIPE SUPPORT LOCATION DRAWING				
DRAWN: NS	DATE: 2017.06.09	DESIGN: NS	SCALE: N.T.S.	REV.: 0
DRAWING NUMBER: 3973-40				



REVISIONS:					
REV	DATE	DESCRIPTION	DWN	CHK	APP
0	2017.06.09	IFC	NS	NS	-
THIS DRAWING AND DATA EMBODY INFORMATION WHICH IS THE CONFIDENTIAL PROPERTY OF CANDYNE INC. AND SHALL NOT BE COPIED, REPRODUCED, DISCLOSED TO OTHERS, OR USED IN WHOLE OR IN PART FOR ANY PURPOSE, WITHOUT THE EXPRESS WRITTEN CONSENT OF CANDYNE INC.					

APPROVALS:

APPROVED FOR CONSTRUCTION

DRAWINGS SHALL NOT BE USED FOR FABRICATION UNLESS THIS STAMP HAS BEEN SIGNED AND DATED BY CANDYNE PERSONNEL. WORK COMPLETED WITHOUT THIS APPROVAL IS AT THE RISK AND EXPENSE OF THE FABRICATOR. REFER TO NOTES BELOW.

☐ APPROVED - PROCEED WITH CONSTRUCTION

☐ APPROVED AS NOTED - PROCEED WITH CONSTRUCTION

SIGNATURE

DATE

CanDyne Inc

CLIENT:

PACKAGE:

PROJECT #3973

WATER INJECTION PUMP PACKAGE

PIPE SUPPORT ISOMETRIC DRAWING

DRAWN:

DATE:

DESIGN:

SCALE:

REV.:

NS

2017.06.09

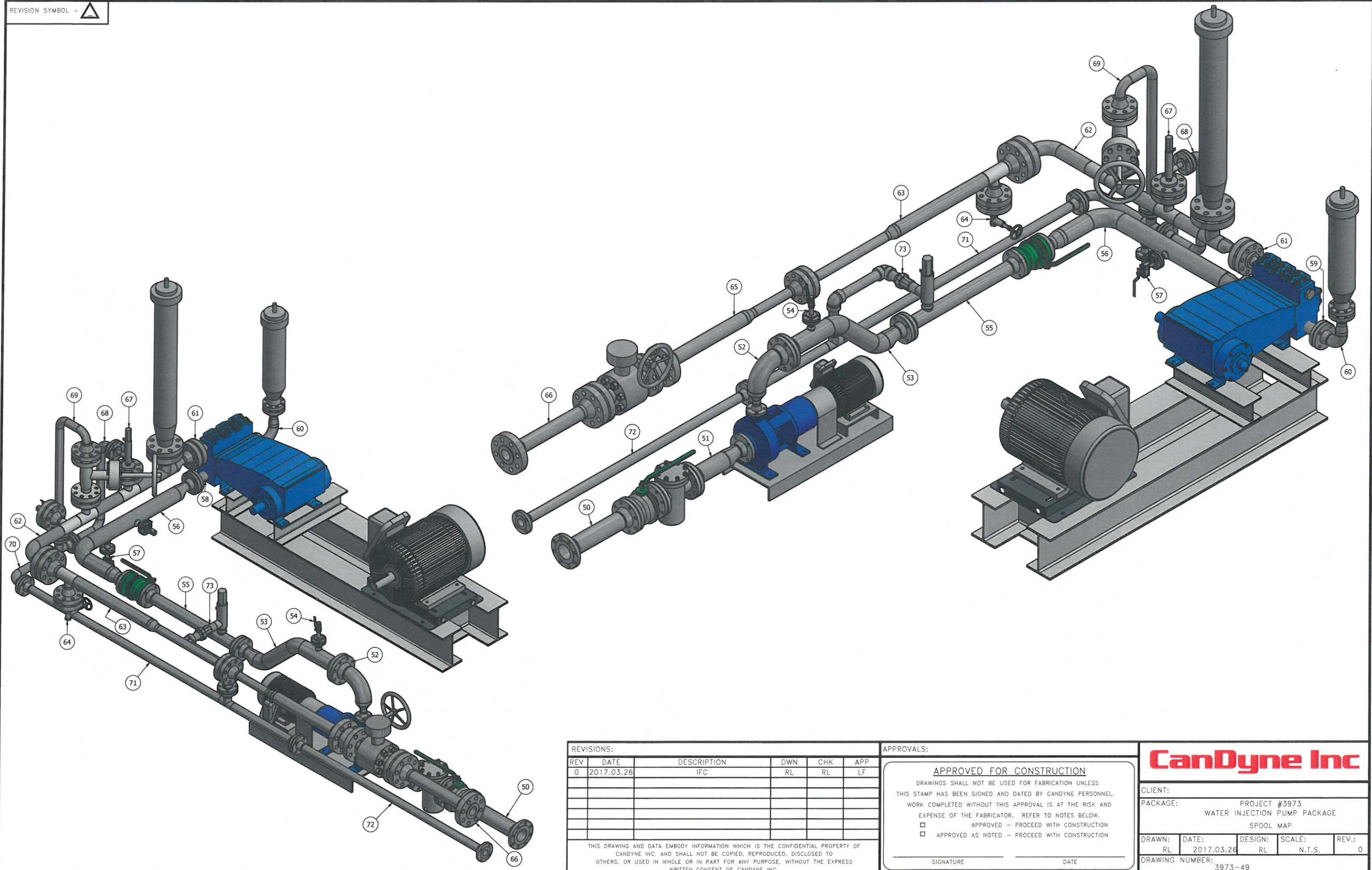
NS

N.T.S.

0


DRAWING NUMBER:

3973-41



REVISIONS:					
REV	DATE	DESCRIPTION	DWN	CHK	APP
0	2017.03.26	IFC	RL	RL	LF
THIS DRAWING AND DATA EMBODY INFORMATION WHICH IS THE CONFIDENTIAL PROPERTY OF CANDYNE INC. AND SHALL NOT BE COPIED, REPRODUCED, DISCLOSED TO OTHERS, OR USED IN WHOLE OR IN PART FOR ANY PURPOSE, WITHOUT THE EXPRESS WRITTEN CONSENT OF CANDYNE INC.					

APPROVALS:	
<div>APPROVED FOR CONSTRUCTION</div> <div>DRAWINGS SHALL NOT BE USED FOR FABRICATION UNLESS THIS STAMP HAS BEEN SIGNED AND DATED BY CANDYNE PERSONNEL. WORK COMPLETED WITHOUT THIS APPROVAL IS AT THE RISK AND EXPENSE OF THE FABRICATOR. REFER TO NOTES BELOW.</div> <div><input type="checkbox"/> APPROVED - PROCEED WITH CONSTRUCTION</div> <div><input type="checkbox"/> APPROVED AS NOTED - PROCEED WITH CONSTRUCTION</div>	
SIGNATURE _____	DATE _____



CLIENT:		PROJECT #3973		
PACKAGE:		WATER INJECTION PUMP PACKAGE		
		SPOOL MAP		
DRAWN: RL	DATE: 2017.03.26	DESIGN: RL	SCALE: N.T.S.	REV.: 0
DRAWING NUMBER: 3973-49				